

The Bridge

MAY & JUNE 2024



- Winkworth Arboretum
- Walk to Eashing
- Busbridge Church tower

godalmingminster.org/thebridge

Are you looking for
Summer holiday activities for your children?



for boys and girls
ages 2-11

BEE ACTIVE ACTIVITY CAMP!



ST HILARY'S PREP SCHOOL

Art | Chess | Dance | Drama | Lego | Music | Sport

Monday 22 July – Friday 9 August

BOOK NOW

www.bookwhen.com/sthilarys

To find out more about joining St Hilary's Prep School
phone 01483 521719 or email admissions@sthilaryschool.com

www.sthilaryschool.com



BEVAN WILSON

Physiotherapy & Sports Injury Clinics

Highly-regarded clinics in Guildford Boxgrove GU1,
Godalming and Wonersh, providing professional
treatment and specialist advice to help you
achieve your goals....

- Physiotherapy & Rehabilitation
- Spinal & Joint Pain, Stiffness
- Pilates & Women's Health
- Post-operative Rehabilitation
- Flexibility, Mobility & Balance
- Children & Adolescents
- Sports Injuries & Massage
- Orthotics & Joint Bracing
- Acupuncture & Electrotherapy
- Working Health & Posture
- Neurological Rehabilitation
- Home & Care Home Visits

01483 424505

info@bevanwilson.co.uk

www.bevanwilson.co.uk

"The care, knowledge and
experience is exceptional, and they
always go above and beyond."



GETTING YOU BETTER TOGETHER FOR 25 YEARS!



FROM THE EDITOR

As many of you will be aware, a new visitor centre and café/ restaurant are under construction at Winkworth Arboretum and should be opening in the summer. In this edition we have news of the progress of the building work and pictures of the interior.

You can also find out about why there is scaffolding up to the tower on Busbridge church, as well as how to support your local scout troop and a review of one of the new restaurants in Godalming.

We hope you find this edition of interest - please let me know if there are any local events you would like advertised.

David Brockman

Copy date for next edition is June 19th 2024

editor.atthebridge@gmail.com

GODALMING

MINSTER

Contents

- 4 Winkworth Arboretum - new visitor centre
- 6 Ukrainian charity event
- 8 Walk with the Bridge - River Wey and Eashing
- 10 Repairs to Busbridge church tower
- 10 Parish Register
- 12 Review - the Greedy Elephant
- 16 Recipe
- 18 Prime Time
- 20 Church Calendar
- 21 A word from the Rector
- 23 Busbridge Scouts
- 26 Godalming and Haslemere rambles
- 27 Nexus News
- 39 Godalming Museum

Front cover: Winkworth Arboretum (David Brockman)

This Page (top): Busbridge Woods bluebells (Chris Payne)

Winkworth Arboretum

As many of you will be aware, a new Visitor Centre is being built at Winkworth Arboretum. Along with others from the local community, I was invited by the National Trust to view progress and find out more about the changes planned.

The new building (pictured right) has shot up in the last few months and will contain a new café and shop. There will also be new visitor reception, toilets and office space.

The planning application was originally submitted in 2020, but the project was put on hold by the Covid epidemic. The project restarted in 2022 and the new building is planned to be opened before the end of the summer.

As visitors will be aware the existing café is very limited in size and the weather is not always warm or dry enough to sit outside. The new café will have 130 seats split between inside and outside. It will be able to offer a much wider menu including hot meals. There will also be a shop



*Winkworth's new visitor centre taking shape
(Photo: Brendan Burbage)*

stocking popular National Trust items and a plant sales area.

A new car park has been built next to the Visitor Centre and will be accessed by a tarmac road to reduce the mud spread onto local roads. The car park will include EV charging points and improved bike parking for cyclists (I

specifically asked about this as many of my visits to Winkworth are made by bike!). The old car park will eventually be absorbed back into the arboretum providing a greatly improved first impression for visitors.

The car park will include marked bays in order to make best use of the space and a turning bay for coaches, but the overall car parking capacity will be similar to before the building work began. This was a



The light and airy café interior with views to the arboretum

deliberate choice to ensure there is no additional impact on local roads and to encourage visitors to use other modes of transport. To facilitate this, bus stops will be added on both sides of the road near the entrance and a shuttle bus may be introduced. There

will be no changes to the existing public footpaths from the south or through the Arboretum.

For more information, use the QR code below or go to <https://www.nationaltrust.org.uk/visit/surrey/winkworth-arboretum/a-new-visitor-centre-for-winkworth-arboretum>

www.nationaltrust.org.uk/visit/surrey/winkworth-arboretum/a-new-visitor-centre-for-winkworth-arboretum

David Brockman



New car parking with better drainage (Photo: Brendan Burbage)



g
GODALMING CHORAL SOCIETY

JOHN RUTTER
THE SPRIG OF THYME

AND ENGLISH SONGS BY
CHARLES VILLIERS STANFORD & OTHERS

Saturday
22 June 2024
at 7:30PM

St John's Church,
Farncombe, GU7 3EJ

Musical Director : Paul Jeanes

Tickets £20 (free for under 18s)

Tickets available from
Record Corner, Pound Lane,
Godalming (CASH ONLY),
www.godalmingchoral.org.uk,
tickets@godalmingchoral.org.uk,
or at the door

Registered Charity No: 254800

Do you remember 1974?

The Three-Day Week, two general elections, IRA bombings in Guildford and Birmingham, West Germany winning the World Cup. Muhammad Ali and George Foreman fought the Rumble in the Jungle. Tiswas, Bagpuss and the Six Million Dollar Man on TV. Mud's "Tiger Feet" and Terry Jaks singing "Seasons In The Sun." Bell-bottoms, platforms and Afros...

Whatever you were wearing, watching or listening to, if you were a local growing up fifty years ago, perhaps you remember the opening of The Chandler Junior School. This year the school celebrates half a century of learning in Witley.

If you were a Chandler pupil sometime in the last fifty years and have any special memories, funny stories, pictures or memorabilia, the school would love to hear from you.

Please email us with your memories on email: info@chandlerjunior.school

Hugh Rawson
Headteacher

The Chandler CE Junior School
www.chandlerjunior.school



Ukrainian Charity Event

On Saturday 24th February the Ukrainian community in Godalming organised a charity event to commemorate the 2nd anniversary of the start of the war with Russia.

The purpose of the event was for the local Ukrainian community to join together with local people from the Godalming area to show unity.

The event was opened with the playing of the Ukrainian National anthem and short speeches from the mayors of Waverley and Godalming.

We were invited to sample delicious traditional Ukrainian foods including *varenyky*, *zrazy*, *nalysnyky*, *pyrizhky* and *korovay*.

A further aim of the event was raise funds for the charity Ukraine Mission (see QR code below). Thanks to the generosity of people attending the event £4,294 was raised. This will be used to purchase items of medical equipment as well as fire and rescue equipment to be used in the



Mayor Penny Rivers with members of the local Ukrainian community

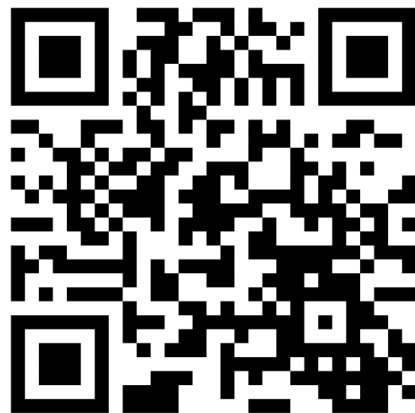
ongoing war with Russia.

Later that day there was a showing of the film *Carol of the Bells*. Named after a popular Ukrainian folk song, the film tells the story of a Ukrainian family during the second world war under Soviet and then Nazi occupation.

David Brockman



Richard Payne & Harrison Silver from the charity Ukraine Mission





Godalming's **local** independent agent celebrating 30 successful years

Property to sell in Godalming or the Villages?

Contact Tony Emery or Jeremy Orchard on 01483 419 300 to arrange a free valuation.

20 High Street, Godalming, Surrey GU7 1EB.
www.emery-orchard.co.uk



Emery & Orchard
ESTATE AGENTS



Walk with the Bridge: Eashing and the River Wey

This month starts at one of the Godalming Minster churches - St Peter and St Paul's in Church Street Godalming. The walk follows the Wey valley to Eashing.

Length 4 miles
Ascent 65m

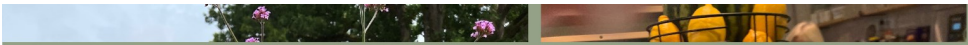
1. Start outside the church and walk down Borough Road towards the river on the opposite side of the road to the church. Follow the footpath sign on the left through the car park and over the footbridge. Rejoin the road and go under the railway bridge
2. Turn left on the footpath 20 metres after the bridge. Follow the footpath (known as Salgassens Path). The main flow of the River Wey is on the left, but other streams such as Hell Ditch are on the right. Stay on the tarmac path.
3. After 600m, the path bears right and goes slightly uphill towards the backs of the houses in Peperharrow road. At the path T-junction turn left onto the path which goes along at the bottom of the gardens. This bears right eventually up to the end of Peperharrow road. Turn left onto the footpath which continues from the end of the road.
4. After 700m there is a garden and a house on the left. Continue on the path and then follow the sign pointing left for the bridleway to Eashing.
5. After 800m, go through the gate and continue straight on where a track comes in from the right. Note a Second World War Pill box on your right and in the valley to your left.
6. After passing some stables and houses turn left on the road through Eashing. Cross the Bridge (see below) - the bridge originates from the 13th Century and is now maintained by the National Trust.
7. After the Bridge turn immediately left onto the footpath by the river (alternatively follow the road to the Stag if you are in need of refreshment). The path starts to bear right uphill away from the river. Pass through a kissing gate into a field and follow the path.
8. Cross a stile by a cottage and turn left onto the road. Take care as there is not always a pavement or verge.
9. Turn left at the bridleway sign (Halfway Lane) and follow the tarmac road.
10. Where the bridleway turns right, continue ahead through a gate marked



"Far Cottage" (there is a footpath sign).
 11. Ignore the road coming in from the right and continue down hill. Views open up towards Frith Hill on the left and the back of the Meath Home is

eventually on your right.
 12. Continue under the railway bridge and then turn left on Vicarage Walk to return to Borough Road.

Text and photos by David Brockman



Great coffee & cake

Served with love

Not for profit

For church & community



A place in the sun

salad bowls back on the menu

Sunny deck now open

Google us for reviews and directions...



Mon-Fri term time
 8.30AM- 4pm
 Saturdays
 10AM- 2PM
 Sundays closed
 School Holidays
 9.30AM- 3.30PM

@yewtreecafegodalming

Busbridge Church Roof

Many of you will have spotted that scaffolding has been erected at Busbridge church to enable access to the roof and tower



In recent months it has become apparent that some of the cedar shingles on the church tower and that some of the louvres were not in great condition (see right), possibly damaged by squirrels. Furthermore there has been a problem with damp on the south side of the chancel for some

time, and we suspected that this was caused by a blocked box gutter above this area.

Resolution of these issues is difficult as complex scaffolding is required which needs to stand independently of the grade 2 listed building. Now the scaffold is in place and we can have a closer look, it is clear there is more work to do. The challenge is now to agree the extent of works to the old oak louvres, strip and replace the cedar shingles to the south and west elevations, clear the box gutters, clean the inside of the tower of pigeon droppings, repair parts of the roof and missing tiles, and prevent further access to the tower by pigeons or squirrels. The work will be completed this summer.

Ian Tomes



Busbridge Parish Register

Baptism

10th March – Olivia Amelie
Standing on 10th March in
Busbridge Church.

Funerals

15th March - John Lear at
Guildford Crematorium

*Correction: entry in March /
April edition should have read:*

2nd February - Elizabeth Jane
Owtram at Guildford
Crematorium

Personal Trainer

in Busbridge



I help people aged over 70 with their strength and balance to prevent falling more capable for life, from my private gym or at their home



Work with me and I'll help you build strength and mobility to be able to continue to enjoy the things you love

Call me today for a free initial meeting

matt@theenergy.coach

07765 108 790

Allford | BESPOKE
Interiors | CABINET
MAKERS

For beautiful, bespoke, fitted or freestanding furniture, Allford Interiors designs and hand crafts innovative solutions for all our clients.

We collaborate closely with you from conception to completion. Each commission is personally designed, created and installed from our workshop in Milford.

Previous commissions include kitchens, studies, bedroom and bathroom furniture, bookcases and creative storage solutions.

Using solid timber or high-quality man-made materials, we can create anything from traditional shaker style furniture to unique contemporary pieces.

For a free design consultation, contact Stephen Allford on 07723717897 or for more information see www.allford.co.uk



H.D Brooks & Sons Painters & Decorators

- Trusted, Rated and Reliable
- All aspects of interior and exterior painting and decorating undertaken
 - High end spray finishing
 - UPVC Spraying
 - Dustless Sanding

Proud members of

Checkatrade.com
Where reputation matters
Rated 9.96 as of 2022

Contact us for a free quote or advice

07557 342518

info@hdbrooksandsons.co.uk
www.hdbrooks.co.uk

Review: The Greedy Elephant

We've been without a Thai restaurant in Godalming High Street for a few years now, so I was thrilled when The Greedy Elephant opened last summer.

I very rarely cook Thai at home, so ask me what my favourite cuisine is to eat out and it's Thai. Every time. For me, Thai food, along with Greek incidentally, is one of the best cuisines to magically take me right back to the memory of where I first enjoyed it; whether it's overlooking the Chao Phraya River towards Bangkok's Wat Arun temple, or enjoying a quick bite in Bangkok Airport, en route home from Japan! To say I was excited about going was an understatement.

Warmly greeted by the owner's wife on arrival, we were seated by the window at the front of the restaurant; a quieter, softly-lit section, with just a handful of tables which suited us for a Friday date night. However, if you go as a larger party, then the back of the restaurant is more vibrant.



We ordered two of the more unusual specialty cocktails – the Tom Yum Martini and Mango & Basil Margarita – which were impressively made. After perusing the extensive a la carte menu



Review: The Greedy Elephant



and struggling to make up our minds, we opted for a sharing platter. There are several options – the light Grazing Elephant, the Lumbering Elephant (for meat lovers), the Swimming Elephant (for seafood lovers) and, what we opted for, the Greediest Elephant. I usually try and steer away from obviously popular Thai dishes but this selection of Thai favourites was a great way to sample a bit of everything and it didn't disappoint.

It included Pad Thai noodles, green chicken curry with jasmine rice, chicken satay, filo-wrapped prawns and my absolute favourite, papaya salad - because it takes me back to being beside a beach on Koh Samui! I can be a bit fickle when it comes to squid but the Salt & Pepper Squid was really flavoursome and incredibly moreish. I love a Tom Yum soup so, see my note above about transporting me back, and you'll understand why we had to order that on the side as well!

It was a really delicious meal and whilst the desserts looked tempting, the Greediest Elephant lived up to its name and we were too stuffed. Yes, that's right, we didn't even 'just take a look'.

This family-run restaurant is a great addition to our High Street so whether you're trying Thai food for the first time or are a firm fan already, I can't recommend The Greedy Elephant enough. It is still very busy so booking in advance is recommended.

Gemma Taylor

As we head into the summer season, Busbridge Tennis Association (BTA) has some exciting new initiatives kicking off at our Holloway Hill courts. These include our coaches running new Taster sessions for teenagers starting Tuesday 7th May at 5-45pm and BTA participation for the first time in some league matches with other local clubs.

This is all in addition to our regular tennis activities of Tuesday and Thursday Club nights (7pm) and our Thursday afternoon Beginners and Improvers Group (2pm) as well as a coaching programme and various BBQs and social activities across the summer. We are very much a community focussed sports club and new members are always welcome. More details of our activities and how to join can be found on our website www.busbridgetennis.co.uk

BUSBRIDGE 
TENNIS
ASSOCIATION



OPEN MORNINGS

PREP

preadmissions@stcatherines.info
01483 899665

Friday 7th June 2024

Focused on NEW Pre-School & Reception entry

Tuesday 17th September 2024

Friday 11th October 2024

SENIOR

admissions@stcatherines.info
01483 899609

Friday 21st June 2024

Prospective Families Interactive Open Event

Thursday 19th September 2024

Wednesday 16th October 2024

GSA Day & Boarding School since 1885 | Near Guildford | GU5 0DF | stcatherines.info



LONGACRE SCHOOL
Nursery

WHERE HAPPY HEARTS
GO ALL THE WAY

**NOW OPEN
YEAR-ROUND**

Discover the engaging learning experience
that awaits your child

Contact our admissions team on admissions@longacreschool.co.uk
to find out more or book a 1-2-1





Inspected and rated
Good
Care Quality Commission

novuscare

Care in the heart of your own home

Are you or an elderly loved one looking for support at home in **Godalming** or the surrounding areas? Then our local carers are here to help.

Novus Care is regulated by the Care Quality Commission and can provide a qualified carer to support your loved one in their own home from just **30 minute visits to 24/7 live-in care**.

For more information or to arrange a **FREE care assessment** please call:
01483 494132 or email:
hello@novus-care.com

www.novus-care.com

Drop Scones with Roasted Strawberries by Elizabeth Silver

If early season strawberries are not quite ripened and sweet enough then roasting them as I have done here with honey and vanilla pod seeds makes for an intensely flavoured, sticky compote like topping which is just delicious spooned over a stack of warm, fluffy drop scone pancakes.



Drop Scones:

Make a thick pouring consistency batter from:

- 175g SR flour
- 30g caster sugar
- 1 tsp baking powder or bicarbonate of soda
- 1 egg
- approx. 200ml of milk.

Beat ingredients until smooth.
Cook individually in a frying pan brushed with oil and turn when

the upper side starts to bubble. They should be golden brown and slightly risen. Layer between baking parchment to keep warm.

Roasted Strawberries:

1 punnet of strawberries
Clear honey
Half a vanilla pod

1. Preheat the oven to 180C
2. Hull the strawberries and cut in half depending on size.
3. Place in an oven proof dish.
4. Drizzle over a couple of tablespoons of clear honey and scrap out the seeds from the vanilla pod. Gently stir to combine.
5. Roast for 15 mins and stir gently then roast for a further 15 mins.
6. Allow to cool until just warm.

Elizabeth Silver



elizabethsilverfood



Compassionate care in the comfort of your own home

For a friendly chat, call:
01483 388090
guildford@gacarers.co.uk
visit gacarers.co.uk/Guildford

Our CareAngels can assist with:

- Companionship & home help
- Shopping & meal preparation
- Personal care/hygiene/grooming
- Changing catheter & stoma bags
 - Administering medication
 - Domestic tasks & cleaning
 - Driving to appointments & outings

Guardian Angel carers

We provide visiting care, overnight care and live in care.



Coming up for Prime Time in May and June...

Tuesday 14th May—Farncombe History Walk



Godalming oozes charm and quaintness and gets lots of attention when it comes to history. But Farncombe has its history too and this walk, led by church member Martyn Sandford uncovers some of the hidden details. Along the way, we will pause to consider some of the people, places and things that have made Farncombe the place it is today. In particular, we will discover the part transport has played in local prosperity.

The walk is under 2.7 miles in length and almost level. Start time: 10am.

Thursday 20th June—Garden Party at Prior’s Field School

By kind invitation of the staff and students at Prior’s Field School, Prime Time members are invited to join them in the school’s Rose Garden on the afternoon of Thursday 20th June for the annual Prime Time Garden Party, which as per previous years will include a programme of musical entertainment performed by our hosts. This has become one of the highlights of the Prime Time year—and is a wonderful opportunity to catch up with Prime Time friends that you may not have seen for a while (as well as enjoying a cream tea in the beautiful setting in the grounds of the school!)



Hearing Aid Clinics - 2024



MONTHLY
2nd Fridays
of the month
2PM - 4PM

- January 12th
- February 9th
- March 8th
- April 12th
- May 10th
- June 14th
- July 12th
- August 9th
- September 13th
- October 11th
- November 8th
- December 13th

The Old Rectory, Busbridge Church

Provided by NHS trained volunteers. Re-tubing, ear moulding and battery replacement. NHS supplied hearing aids only

No need to book - come along for FREE hearing aid maintenance, battery changes and advice

For more information on the Hearing Aid Clinic please contact Penny Naylor.
E mail: penny.naylor@godalmingminster.org
Phone 01483 421267
See www.godalmingminster.org



Regular **Coffee Drop-In** sessions take place in the **Yew Tree Café** every Monday morning between 10.30 and 11.30am. No need to book ahead for these sessions, just come along and enjoy the chat and good company. A member of the Prime Time Team will always be there to welcome you.

For further details regarding Prime Time or to book onto any Prime Time event, please contact the Prime Time Team via the Church Office on 01483 421267 or email: primetime@godalmingminster.org

The monthly Movie Matinee screenings are taking a break for the summer. We promise they will be back in the autumn though! The first Movie Matinee of the 2024/25 season will take place on Saturday 23rd November.



Fully Insured

Fully Qualified

Corrective
Surgery

Reducing

Pruning

Thinning



Felling

Dismantling

Hedge
Trimming

Stump Grinding

Julian Draper NCH Arb

Tel 01428 681978 Mob 07968 827711

forkingbranches@hotmail.com

Kate Reynolds
SURREY SLEEP COACH®

Struggling with Sleep?
I CAN HELP

CERTIFIED
OCN LEVEL 6
Sleep Coach

★★★★★
SurreySleepCoach.com

Book Consultation Now!

I would **highly recommend Kate**. She was very enthusiastic and considerate. Her knowledge in baby sleeping is impressive, as well as her parenting experience. **We loved her approach** to sleep training which didn't cause any stress on both the baby and our lives. Our baby **can now sleep very well with little disruption**.

Jenny, Godalming



Godalming Minster

Brighton Road (Busbridge)

Sunday Services

10am

Classic Service

with communion on 1st Sundays of the month

6pm

Evening Worship

with youth on 1st Sundays
& communion on 4th Sundays

The **Contemporary** congregation now gathers
at Godalming Minster Church Street at
10.30am 2-5th Sundays of the month.
Children's groups take place in the Octagon.

For all Godalming Minster services see
www.godalmingminster.org/sundays



ALL
INVITED TO
**MUDDY
CHURCH**
10.30AM ON 1ST SUNDAYS

5 May JACK PHILLIPS MEMORIAL
GU7 1ES ///blaze.outfit.swept

2 JUN
HOLLOWAY HILL RECREATION
GROUND
GU7 1QD ///remain.laws.dine

To find Muddy, you can use the
what3words location. Download
the /// app.

SPECIAL DATES:

19th May Pentecost Sunday will be celebrated in all services
23rd June 10am Hambledon Festival Service on the Green replaces Classic at Brighton Road



Do keep an eye on the notices which can be found on the web site:
www.godalmingminster.org/notices
Or contact vic.hicks@godalmingminster.org to subscribe to email.
we look forward to seeing you!

**GODALMING
MINSTER**

A Word from the Rector: The Empty Bench

A year ago, I was on my extended study leave. I spent part of this time of spiritual and soul refreshment walking part of the South West Coastal Path. I heard stories of life from people I met along the way, saw great sights, paused to pray and spent time considering words from Scripture.

A year is a long time, but it can also feel like no time has passed. At around this time last year I came across a bench. It was set back from the footpath, facing a wooden safety fence and a tranquil view far out to sea. I can remember that moment as if it was yesterday because of what was on the empty bench.

Someone had tied a bouquet of flowers to the side of the bench. A handwritten note next to them had blown open so that anyone could read it. I read enough of it to realise that it was a private note, yet left in a public place, so I stopped reading and closed it back up by moving a pebble back over it.

In a sense, on that bench I felt connected, for just a moment. It was as if I had met someone without ever knowing them. I met someone whose life had come to an end, and I met someone who cared enough to leave flowers. I reflected then that if only people saw connections in the way God intended them to be, people would be kinder, gentler and less fearful of one another and situations as they sat on a bench or left flowers of love. The

actor Robin Williams poignantly observed that “everyone you meet is fighting a battle you know nothing about. Be kind. Always.”

In the days ahead, you may find yourself walking past an empty bench. You may even sit on one and take a moment to think about life and the soul. It might draw you to trying to pray. Or you may see someone sitting on one without realising what they are going through.

At such times, Jesus words of connection remind us of his claim to be God, able to join people on their bench: “I and the Father are one” (Bible, John 10:30). My hope as I passed that bench was that this message would roll across the years. It does not change over seasons, years or millennia. It isn’t reliant on world events or personal situations. It is the soul fuel that enables us to recognise the battles people face and to see the people who are sitting on benches wondering about life. It can give us the words to pray.

Rev. Simon Taylor





Sling Fit & Hike Club

Babywearing classes and community hikes in the Godalming area

Scan to book!



@sweat_with_charlie
www.sweatwithcharlie.com

Safe & effective pre & post natal friendly workouts and guided hikes followed by coffee and cake!



Anna Rowlandson
PHOTOGRAPHY

Relaxed and natural wedding & family photography



www.annarowlandson.com

MJ NOYES

For domestic electrical installation

Martin Noyes


2B Charterhouse Road
Godalming
Surrey GU7 2AG

Tel: 01483 427340 | Mobile: 07947 093830
Email: mjn@uwclub.net

www.findacraftsman.com/listing/m-j-noyes-electrical



THE GUILD
OF MASTER CRAFTSMEN



FSB

IET The Institution of Engineering and Technology

A J Bennewith & Co


CHARTERED ACCOUNTANTS

We are an independent practice that has been offering a personal service for over 30 years

Contact us for all your accounting needs, tax needs and a free initial consultation

Registered Auditors
Personal Tax Returns
Companies & Charities

Tel: 01483 539 777
www.bennewith.co.uk



Busbridge Scouts

Are you passionate about making a positive impact on young lives and shaping future leaders? If so, we have an exciting opportunity for you! 1st Busbridge Scouts is currently seeking volunteer assistant leaders to join our team.

By volunteering with the Scouts, you have the chance to play a crucial role in the personal development of our members. Through engaging outdoor activities, teamwork exercises, and leadership opportunities, you will empower young individuals to explore their potential and discover the value of self-reliance. Your guidance and support will contribute to the growth of resilient and capable young adults, setting them on a path for future success.

Worried about not having prior experience? Don't fret! Full training and ongoing support will be provided to equip you with the skills and knowledge needed to excel in this role.



Whether you have previous scouting experience or are completely new to the movement, we welcome individuals who are enthusiastic, dedicated, and eager to make a difference in the lives of young people. The best part? You can help as little or as much as you wish! Whether you're able to commit to every meeting or offer your support on a more flexible basis, your involvement will make a meaningful impact. Join us in this fulfilling journey of mentorship and leadership, and be a part of a community that is committed to nurturing the next generation of leaders. If you're ready to inspire and support the youth in our community, we invite you to become an assistant scout leader with 1st Busbridge Scouts. Your impact will be felt for years to come! Interested? Grab your phone now and email me: Rwainwright33@hotmail.com.

Richard Wainwright



B Birchgrove Godalming Pepperpot House

Luxury assisted living retirement apartments

Enjoy more.

Leading the way in retirement rental living

At Birchgrove, we invite you to embrace the beauty of later life – and enjoy more of what you love. Enjoy more time with loved ones and more freedom to live life as you please.

Enjoy a home more thoughtfully designed to make living in later life easier, featuring waist-height appliances and step-free en suites. Be part of a vibrant social community with more to do in exceptional facilities like a Restaurant, Club Room, Wellness Suite and Bar. Experience the peace of mind a more secure new home with on-site 24hr concierge brings. And leave any property maintenance worries behind.

Say goodbye to all that home ownership hassle and hello to an inclusive rental option.



B Ready to make yourself at home? 020 3929 5599
www.birchgrove.life



Locations in Surrey, Kent & London:

Banstead | Chiswick | Ewell | Godalming | Hampton
Leatherhead | Mill Hill | Sidcup | Woking



Advertisement Feature

What's your reason?

Moving from a large family home to something easier to manage raises a lot of questions and triggers some powerful emotions. The practical side of our brain tells us the earlier we do it, the better we are – physically, socially and financially. Yet, understandably it's not a task anyone undertakes lightly.

Birchgrove, the specialist developer of retirement properties, provides high quality self-contained assisted living apartments in purpose-built developments. With properties located in London, Kent and Surrey.

You'll find Birchgrove apartments are spacious and more importantly future-designed to meet all your needs in later life – without compromising on style. Our onsite facilities are extensive and include a club room, restaurant, licensed bar, wellness suite, landscaped gardens and so much more.

Our monthly events calendar ensures there is something for everyone; whether lively group activities, or quiet spaces for personal pursuits and reflection.

Apartment living has its perks; no lawns to mow or gardens to weed yet you can still enjoy the beautiful surrounding area from your own outside space or the communal grounds.

Everyone has a different reason for moving to us. Location is a big driver; people want to stay close to family and friends and live in an area they are familiar with so they can get out and about confidently. They also want to live in a place they feel safe, where people are on hand to help – plus have that all-important opportunity to be around others and socialise.

Accessibility is another key point and all who visit – without exception – say 'WOW' when they visit our show suites and see the apartments are not only beautiful but future-designed to be practical and accessible. Every detail has been thought through to ensure you have a home in which you can live independently, securely and happily.

On the subject of future planning, we work with senior move specialists and our Moveasy service connects you with a financial planner – people who have the expertise to understand your personal needs and provide advice that is right for you and your family.

To find out more about Birchgrove and to explore your options, please contact the team on 020 3929 5599 or visit www.birchgrove.life



Godalming and Haslemere Ramblers

Do you like walking? If so, you might be interested in your local Ramblers group. The Godalming and Haslemere Ramblers are well known as a friendly and inclusive group.

Haslemere Ramblers held their inaugural meeting on 11 February 1970 at the Shottermill Church Rooms, Haslemere. Godalming Ramblers was formed in February 1974 and in March 1976 the two Groups merged to become the Godalming and Haslemere Ramblers Group. Today the group has over 440 members, organises over 250 walks during the year and has a total annual attendance on walks of 3500 people.

We are one of sixteen groups in Surrey area. The Area Footpaths and Access Officer liaises with Ramblers Central Office, Surrey County Council and local Footpath Secretaries to work on rights of way issues. Footpath problems can be reported on the form to be found on our website gandhramblers.org.uk. G and H has regular working parties where we support SCC Countryside Access, installing gates, bridges and way markers and cutting back vegetation. Ramblers also campaign to make the countryside available to all to enjoy on foot and to protect rights of way. The Don't Lose Your Way campaign has led to thousands of members of the public identifying 41,000 miles of lost paths.

Members join the Ramblers and pay an annual subscription. They are allocated to a local group which could be one of their choice or the one nearest to them. They may, however, walk with any group of Ramblers throughout the UK.

Non-members are very welcome to walk up to 3 times with a group before deciding to join the Ramblers.

We have weekly walks, on Wednesdays, Thursdays and at weekends, ranging from leisurely walks of about 5 miles to longer walks of 12 or 13 miles. In the summer we also have Friday evening walks. Anyone wishing to join a walk can find the details on our website, gandhramblers.org. Ring the walk leader in advance if you want further details, or just come along to the start of the walk - your friendly local group will be please to meet you!

Two walks local to Godalming/ Busbridge are Thursday 30th May, meet Busbridge Church 10.00am 5.6 miles; and Friday 21st June meet 7.00pm, Hascombe, opposite the White Horse, 4 miles. We hope you will join us on a walk in the near future.

Janet Cole



The April talk by **Alan Betts** on **'National Parks in England and Wales: Our Protected Landscapes'**

was informative, interactive and fun. He had us drawing a map of the UK (with varying artistic skills!) and guessing which park was shown in his photos! Lots of new places to visit! Thanks to Alan for standing in so well for us.

Nexus
linking church & community

On **Thursday 2nd May**, we welcome the return of **Helen McCann**, a Registered Blind Guide Dog owner. Helen lost her sight about 20 years ago and decided to train for her first marathon, having never run before! Her severely limited vision has not deterred her from leading a full and active life!

Helen has written and now published **'Running Blind'** - her life story about overcoming disabilities to achieve amazing things like running marathons and becoming a triathlete! Helen will be accompanied by her new guide dog, Poppy.

Each June, we enjoy an **evening visit to an NGS garden** and then go for a pub meal afterwards. This will happen on **6th June**, but the garden and pub are still to be decided! **Put this in your diary** and details will be on the Godalming Minster website closer to the time. If you'd like to be on our email distribution list, please email your details to Kate, see below, and we'll keep you updated on all our events.



On **4th July**, **Martin Brunet**, GP and Trustee of the **Farncombe Community Garden**, will come and tell us all about this exciting venture. Many of us went to their Open Day on 23rd March and were impressed with how well the garden is coming along. Nexus has chosen the Farncombe Community Garden as our charity for 2024, so please put the date in your diary and come along to find out more!

All our events, unless otherwise advertised, are held in the **Busbridge Old Rectory, GU7 1XA**. We start at **8.00pm**, with a drink and nibbles and chance to socialise before handing over to our speakers for their presentations.

All are welcome – including men! We look forward to seeing you!

2024 Annual Subscription £20

Guests: £5.00 contribution towards speaker costs

New members welcome! For information, please contact:

janetmharvey@btinternet.com or katekaye2@btinternet.com

**Nexus – building a network of friendship and support
between church and community**



**FIRST
SESSION
FREE!**

Scan the code:



or email us:
**info@motivation
bymusic.com**

MbM Contemporary Gospel Choir

Embracing the **person** behind the voice

Meeting in Busbridge **Tuesdays 1-2pm.**

Alternative sessions available.

Surrey's **vibrant** and **inclusive**
adult community choir!



@motivationbymusic
on socials

Led by inspiring **award-winning** Choir Leader and
Founder of Motivation by Music, **Emily Bollon.**



LOOKING FOR A NEW ROLE?

Nestled within the beautiful & peaceful Surrey countryside, Ladywell Convent is home to the Sisters of Franciscan Missionaries of the Divine Motherhood. A group of Sisters, who have, & continue to dedicate their lives to supporting those in need.

Due to continued growth and the opening of our newly refurbished Franciscan Centre, Ladywell Convent has a number of **job opportunities** available in a range of sectors, including **Care**, **Maintenance**, **Hospitality** & **Administration**.

Ladywell Convent is a vibrant & busy place of work, with around 70 employees. Each of which, support the Sisters, in an environment that offers varied *opportunities and personal growth*.

Get in touch with HR to find out more about our current & upcoming roles, or to submit your CV.



Contact HR

01483 425775 | Recruitment@ladywell.org.uk

BUSBRIDGE EVENING WI

Our monthly meetings are held on the 2nd Tuesday of each month at Busbridge Village Hall at 8.pm . New members very welcome Contact Ann Heward 01483 420360.

Tuesday 14th May: Speaker from our chosen charity this year "The Hunter Centre" at Haslemere providing day care for people with Dementia.

Also our Resolutions and Flower Cup.

Tuesday 11th June "Life at the Tower of London and the Crown Jewels" by a Yeoman Warder and his wife, keeper of the jewels. Alan & Pat Kingshott speakers.



R. & R. Roofing

Guildford

Roofing Contractor & General Builder



- NEW ROOFS & REPAIRS
- CHIMNEY POINTING & REBUILD
- SLATING • TILING
- HIGH PERFORMANCE TORCH-ON FELTS
- FLAT ROOFS • LEAD WORK
- GUTTERING • uPVC FASCIAS & SOFFITS
- EXTERIOR MAINTENANCE

FREE ESTIMATES EMERGENCY SERVICE

01932 344660

07956 554604

7 Rivermead Byfleet KT14 7BZ

Email: russ@rr-roofing.co.uk



Vivace Chorus will perform this awe-inspiring piece alongside the Liverpool Welsh Choral Union and the National Symphony Orchestra at GLive. With 200 singers, a huge orchestra, four soloists and eight off-stage trumpets, it promises to be a night full of drama and beauty.

GLive, London Rd, Guildford GU1 2AA

18 May 2024, 19.30

Tickets £12.50-£35

0343 310 0055 GLive.co.uk

My
Personal
Fixer



Time Poor?

Too much Life Admin?

Need help getting through your
to-do list

I can help create time for you

Get in touch

info@mypersonalfixer.com

07985 499 197

www.mypersonalfixer.com



Computer Repairs



- ✓ Desktop & Laptop Repairs
- ✓ Wireless & Wired Networking
- ✓ PC Upgrades & Tune Ups
- ✓ Virus & Spyware Removal
- ✓ Data Backup & Recovery
- ✓ Server Support



ONSITE REPAIR OR COLLECTION
PROFESSIONAL AND RELIABLE SERVICE
RESIDENTIAL & BUSINESS CUSTOMERS ARE WELCOME



WE ALSO BUY OR REPAIR YOUR



BROKEN IPADS &
MACBOOK LAPTOPS



REASONABLE PRICES AND FAST TURNAROUND



07809 401721



01483 419468



www.TechGuy.biz



michael@TechGuy.biz



A unique opportunity for children
aged 7-11

Godalming Choral Society invites you to
be part of our end of season Summer
Concert at St John's Church, Farncombe
22nd June 2024—7.30pm

Songs to be performed include:
Orford Lighthouse / I just gotta sing
(Listen to these on our website!
www.godalmingchoral.org.uk)

To take part
sign up for our FREE rehearsal
workshop
30th May – 10am-12pm
Email: gcc@godalmingchoral.org.uk

Supported by Surrey County Council

RB Carpentry & Joinery



Cabinetry,
Carpentry &
Joinery

Kitchen Fitting

General Property
Maintenance

40 years
experience

References
available

Busbridge based

Contact :
Rob Beasley
0797 7944162

Fed up with Ironing? Let the Ironing Fairy do it for you!



You are not alone!

Ironing is the most dreaded household chore.
We regularly heard people wishing for a "ironing fairy"
to take it off their hands, which is why we started our
business.

Why choose us?

- ✓ Free collection & delivery
- ✓ Turnaround in 48 hours
- ✓ Professional service

We can work around you

Whether you require a regular weekly or 'on demand'
ironing service.



01483 428044



07809 401794

www.ironingfairy.net



Christian Aid Week 12th to 18th May 2024



PUSH BACK AGAINST POVERTY

Christian Aid Week brings people together as one community helping those living in poverty to transform their own lives.

Poverty is an outrage against humanity. It robs people of their dignity and lets injustice thrive.

Aline Nibogora, a determined mother in Burundi, one of the world's poorest countries, was pushed to the brink of survival by poverty. She lost everything and had to sleep on the streets.

Supporting Christian Aid could help fund the training that enables a community like Aline's to form a Village Saving and Loans Association (VSLA) that will support people to grow food, buy medicine and improve their living conditions. Together we can help families plan for a better future.

With every gift. Every action. Every prayer. Every one of us can change lives. This Christian Aid Week, you can be one of the hundreds of thousands of our supporters who give, act and pray – stepping out in love for our global neighbours. With you by our side, we won't stop until everyone can live a full life, free from poverty and hunger.

This Christian Aid Week:

- Please give generously to help the world's poorest people
- Pray that families will stay strong during tough times of price increases and erratic weather.

Donate at <https://www.christianaid.org.uk/> or scan the QR code.



Printed by **LINNERLAKE**

LITHO & DIGITAL PRINTERS

Established family business, based in Guildford with free delivery to Godalming. Leaflets, posters, booklets, order of services, wire bound books & more

www.linnerlake.co.uk

07590 047750

linnerlake@gmail.com

Godalming Funeral Service

Established 2022



Godalming Funeral Service are here to support and guide you. Caring for families of all faiths since 2022 in Godalming and the surrounding areas.

Paul and Anghus Weightman and our team are available 24 hours a day by telephone or you can arrange a home visit.

- 24 Hour Service
- Bereavement Advice
- Transparent Pricing
- Private Chapel of Rest
- Floral Tributes
- Memorial Masonry
- Home Visits
- Prepaid Funeral Plans

01483 970 610

Meadow Croft, Bridge Road, GU7 3DT

godalmingfuneralservice.co.uk

 **Funeral Partners**



Cranleigh Tiles & Bathrooms

246 High Street, Cranleigh, GU6 8RL



Whatever the budget, from non-branded basics and essentials to more sophisticated designer products, our family-run bathroom showroom led by Craig Cooper is here to help. We offer free, no obligation estimates and advice on everything bathroom related.

Bathroom Essentials • Showers • Toilets & Washbasins • Baths
Wet Rooms • Lighting • Tiles & Flooring
Design & Installation Available


Open 9.00am to 5.00pm Monday to Friday
Please ring to make an appointment

Saturdays 9.00am to 12.00pm
By appointment only

Telephone 01483 272727 or 07539 145513
craig@cranleighbathroomstudios.co.uk
www.cranleighbathroomstudios.co.uk

MOVE 2 THE BEAT

ATTENTION ALL INCREDIBLE
Women out there!



Join me for a lively

EXERCISE TO MUSIC

class, where we'll press pause on our daily responsibilities to prioritise our physical and mental health for a precious hour to dance, move, and groove to iconic songs!

📍 United Church Godalming, GU7 3DT

MOVE 2 THE BEAT

STRONG NATION

Or join me for a

STRONG NATION

session where every squat, every lunge, every burpee is driven by the exclusively engineered music, helping you make it to that last rep, and maybe even 5 more

For more information or to book get in touch with Assal!
asaljamm@gmail.com
📞 07715278905

📍 Hone Gym, GU8 5SZ



Donline
COMPUTER
CONSULTANCY



Donline offers professional computer engineering services to: Small Business, Home Office, & Home Users.

Donline can assist with all of your IT requirements: Supply & installation of hardware and software, upgrades, networking, system and data recovery, printing, security, cloud computing, technical support and training.

Call: Don Tocher, on
07870-643486 or 02392-989594



Microsoft
CERTIFIED
Systems Engineer

Or contact Donline, online:
Web: www.donline.co.uk
Email: don@donline.co.uk

Busbridge Design & Build

www.busbridgedesignbuild.co.uk
07968 022526

Your local firm, specialising in high quality new-builds, extensions, refurbishment and all other aspects of building works

Offering exceptional levels of service & attention to detail at competitive prices

Excellent local references and referrals

Contact us today for a quotation or to discuss your requirements



We have a monthly **Coffee Stop** at Godalming Baptist Church to raise funds for charities.

Saturday May 20th from 10.00am-12.00 Noon. Please do come and enjoy tea/ coffee and delicious homemade cakes. No charge but donations appreciated for **Sophie's Legacy** (At

RSCH pizzas are given to parents of children in the hospital at the weekend see

<https://www.sophieslegacy.co.uk/>)

Saturday 8th June: Coffee Stop in aid of Farncombe Community Garden

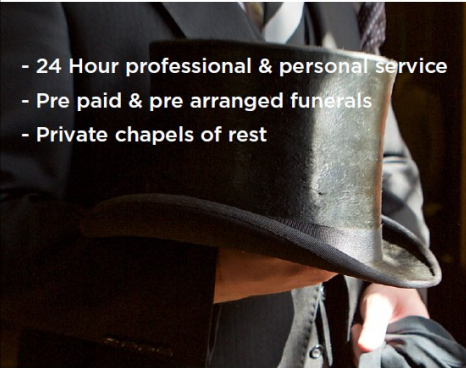
Saturday 22nd June 10 am - 12:30 pm: Loneliness - a talk by Revd Peter Jackson. Loneliness is a huge issue in our society today. Do come and be encouraged for yourself and to help others.

For more details on all events see <https://www.godalmingbaptistchurch.org.uk/events> or contact Sally Pollard on 01483 428646 or email: pollard3@hotmail.co.uk

MULLARD

FUNERALS — GODALMING SINCE 1827

INDEPENDENT FUNERAL DIRECTORS
& MEMORIAL MASONS



- 24 Hour professional & personal service
- Pre paid & pre arranged funerals
- Private chapels of rest

01483 860279 • www.mullards.uk

121-123 High Street, Godalming
Surrey, GU7 1AG



FARNCOMBE MORNING TOWNSWOMEN'S GUILD meet in St John's church room, St John's Church, Farncombe GU7 3EH on the second Wednesday morning of each month from 10.00 – 12.00. The next meeting will be on **May 8th**: talk entitled 'Tomb of the Unknown Warrior'. The following meeting will be held on **June 12th** and will be 'Games with Cakes!' You are very welcome to attend as a visitor (small charge). We are a friendly group - just turn up and you will be made very welcome or for further details phone Dot Pullen on 01483 422753.

Painter & Decorator

interiors/exteriors, quotes and advice

For a full professional service please call

Roger Flynn
07508495474

www.Matayz.co.uk

07508 061090

DJ • Music Producer • Surrey • Parties

Small Ads

COME AND JOIN LES AMITIES FRANÇAISES DE GODALMING!

If interested in French language and culture, you can attend our monthly lectures as a visitor or become a member. For more information on all our events, visit

www.amitiesfrançaisesgodalming.com

GARDENER TRAINED WITH THE RHS, HARD WORKING AND RELIABLE.

Will undertake weeding, pruning, mulching and bed work plus more from £25 per hour and medium hedge cutting service priced per job. Contact Matthew on **07833 683906**

PC Doctor Godalming

Fixing computers of all shapes and sizes

If your computer is run down, unreliable and generally out of sorts then why not call for professional help and advice in your own home. All types of computer or network problems dealt with on a "No Fix No Fee" basis.



79 Pullman Lane, Godalming, GU7 1YB
Tel: 01483 424378 | 07876476990
email to: mike.lagan@pcdocgo.co.uk



Free valuations every weekday:
9am-5pm

Ewbank's



Surrey and Hampshire's Premier Antique and Specialist Auctioneers



UPCOMING AUCTIONS

RETRO VIDEO GAMES & CONSOLES 2 MAY

TRADING CARDS - POKÉMON 16 MAY

PRE-LOVED, VINTAGE & ANTIQUE 17 MAY

FINE WINES & SPIRITS 22 MAY

VINTAGE POSTERS 24 MAY

COMICS 29 MAY

ENTERTAINMENT & MEMORABILIA 30 & 31 MAY

JAMES BOND 7 JUNE

JEWELLERY, WATCHES & COINS 19 JUNE

SILVER & FINE ART 20 JUNE

ANTIQUES, BOOKS, STAMPS, CLOCKS & FURNITURE

21 JUNE

CARS, MOTORBIKES, PARTS & AUTOMOBILIA

28 JUNE

info@ewbanks.co.uk 01483 223101 www.ewbanks.co.uk

Burnt Common Auction Rooms, London Road, Send, GU23 7LN

www.samaritans.org

You can call them free on 116 123 or
email jo@samaritans.org

Whoever you are and whatever you're facing, they won't judge you or tell you what to do. They're here to listen so you don't have to face it alone.

When life is difficult, Samaritans are here – day or night, 365 days a year

Appliance Service and Sales

- Repair of most main makes
- Built-in and Freestanding
- New appliances with installation
- * Built in and American F/F

Checkatrade.com
Where reputation matters

**Cooker/Oven
Dishwasher
Washing Machine
Tumble Dryer
Fridge/Freezer ***

Elstead (01252) 705198

www.applianceexpert.co.uk



Seniors Helping Seniors

... A WAY TO GIVE AND TO RECEIVE

STEP INTO SPRING

with Your Trusted Home Care Services

Guildford | Godalming | Woking

Companionship • Medical Appointments • Transportation
Meal Times • Pet Care • Dementia Care • Respite Care
Shopping • Housekeeping • Laundry • Gardening



★★★★★ 4.9(295)

"Seniors Helping Seniors provided a carer for my elderly Mum. The carer was kind, patient and flexible, and went above and beyond to ensure my Mum was safe and happy."

Get in Contact Today!

☎ 01483 416 653

✉ contact@seniorshelpingseniors.co.uk

🔍 www.seniorshelpingseniors.co.uk



The **Bridge** *Magazine* - editor.atthebridge@gmail.com

We ask you to please make sure that those people who are the focus in photos have given their consent to be included in our publication and on our website; in the case of minors we ask that this is parental consent. "The Bridge" would like to thank advertisers for their support, but to make clear to readers that it does not offer any endorsement of the goods or services advertised. Views expressed in the articles are not necessarily those of the Editor or Busbridge Church. The Editorial Team reserve the right to edit any articles submitted for consideration for publication.

EDITORIAL TEAM

David Brockman (Editor)
Jacky Beale (Small Ads) 01483 423768
Lorna Sherwin
Gemma Taylor

Contact the Editor:
editor.atthebridge@gmail.com
Contact the Treasurer:
bridgetreasurer@godalmingminster.org

**Copy Date for next edition:
Wed 19th June**

Write to us:
c/o Church Office, The Old Rectory, Old
Rectory Gardens, Godalming GU7 1XB.

Rector: Rev Simon Taylor 01483 421267

Advertising

Display Advertising is for businesses who wish to advertise in full, half, quarter or eighth page format. Contact:
editor.atthebridge@gmail.com

Small Ads are designed to advertise local services. £5 per insert, 40 words maximum. For Sale items £2, 20 words maximum. Please contact Jacky at: jackybeale@hotmail.com

We deliver free of charge to over 1950 local homes. For more information, please contact:
editor.atthebridge@gmail.com

Next copy date is 14th August

We reserve the right to decline advertising or payment for advertising at our discretion.

*Professional, confidential &
sympathetic counselling*

Gill Brennan

MBACP (Accred), FdA (Hons), BA (Hons)
07947 424 538
gillhbrennan@gmail.com

www.godalmingcounsellor.com



Vanessa Edwards Hypnotherapy

Cognitive Hypnotherapist
DipCHyp, NLP, (Master Prac) HPD, MNCH,
CNHC Reg.

www.vanessaedwardshypnotherapy.co.uk
info@vanessaedwardshypnotherapy
07523101952

I specialise in helping women, young adults and teenagers with the following conditions:

anxiety, stress, depression, confidence, low self-esteem, weight loss, menopause management, trauma, sleep issues, smoking, fears and phobias.

Godalming MUSEUM

An exhibition by The Meath Epilepsy Charity and Artventure Trust will be at the Museum until 11th May.

This joint venture is inspired by the River Wey and reflects what the river means for the artists supported by the two charities. The river that runs between the two charities in Godalming has provided a wealth of creative stimulus, from local history to the workings of a lock, and from barge art to wildlife.

To find out more about these important local charities visit their websites at Artventure and The Meath.

From 14th May to 8th June the exhibition is Earth Sprites Emerging.

Earth Sprites are a Godalming based creation of the What Next's Eco-theatre,

with the aim to help humans address the challenges of the climate and ecological crisis, and to mitigate and adapt to its impacts, through the work of collaborating artists. Artworks inspired by these Earth Sprites will be provided by local community groups, schools, What Next volunteers and the general-public, all of whom will be invited to submit their work. What Next will also put on performances of its Rubbish Puppet Theatre show during half-term.

Milford Artists Summer Exhibition runs from 11th to 29th June. These local artists will show paintings of a wide range of subjects both home and abroad, and in various media including oil, watercolour, pastel, and acrylic. Work in this varied exhibition will be for sale.

Surrey Guild of Craftsmen members are selected professional craftsmen and designer-makers of contemporary and traditional applied arts. A rotating display of works by members of the guild will be on display throughout the year, and are available to purchase.

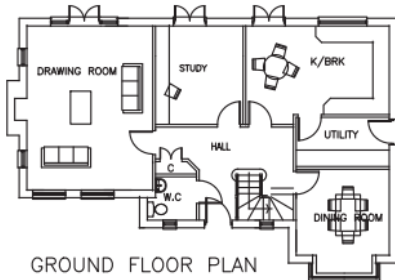
Godalming Museum Coffee Club meets from **11am to 1pm on the 3rd Monday of each month.** Would you like to connect with other people in Godalming to share memories, have interesting conversations, and build new friendships in our relaxed and friendly group? Everyone is welcome, just come along.

Godalming Museum is open Tuesday to Saturday 10am to 4pm, next to the Town Council offices, by the Pepperpot, 109A High St, GU7 1AQ, Please check the website www.godalmingmuseum.org.uk or ring 01483 426510 in opening hours for further details.





FRONT ELEVATION



GROUND FLOOR PLAN

PLANNING & DESIGN SERVICE LLP

Architectural drawings for
Extensions, Alterations &
New Build

Free No Obligation Quotations

Tel: 01483 417555
Mob: 07818 014357

www.architecturesurrey.co.uk
simonplanning.design@btinternet.com



Russell's Hedges & Tree Care Services

**Tree felling • Reductions • Pruning • Crown Lifting
Thinning • Hedges • Stump Grinding**

Fully Qualified & Insured

Member of Checkatrade

Russell Beddard

Tel: 01483 208161 Mob: 07722 506720

Email: rsgservices@outlook.com