

The Bridge

SEPTEMBER & OCTOBER 2021



Spanning the LOCAL COMMUNITY

www.bhcgodalming.org/thebridge

PRIOR'S FIELD

GODALMING SURREY



GSA Girls' Boarding and Day School 11-18

*Achievement in all its forms
is alive and kicking in every
part of their school day.*

- Tatler Schools Guide 2021



PRIOR'S FIELD - THE PLACE TO ACHIEVE!

Visit our website to book your place at one of our Autumn Open Days
Saturday 11 and 25 September or Saturday 9 October
01483 810551 www.priorsfieldschool.com

#believe #achieve #succeed

Registered Charity No. 312038



CONTENTS

PAGE 9 *50th Birthday of the WI*
After a long wait, Busbridge Evening WI are finally able to celebrate their 50th birthday!

PAGE 13 *Getting Creative*
A look at some of the recent creative offerings from the very talented local students at Godalming College.

PAGES 14 TO 15 *Coping with Covid*
An insight into Godalming Town Council's strategy and approach to the challenges of the last 18 months during the pandemic.

PAGE 18 *Rector Simon Writes*

PAGES 20–21 *The Yew Tree Cafe*
Some background and introduction to this new local community café due to open shortly.



FRONT COVER : Fly Agaric mushroom at Winkworth Arboretum by kind courtesy of Chris Payne

Appliance Service and Sales

- Repair of most main makes
- Built-in and Freestanding
- New appliances with installation
- * Built in and American F/F

Checkatrade.com
Where reputation matters

**Cooker/Oven
Dishwasher
Washing Machine
Tumble Dryer
Fridge/Freezer ***

Elstead (01252) 705198

www.applianceexpert.co.uk

Out & About this SUMMER



On Monday 28th June the Year R children at St Edmund's School had their very first school trip. They were very excited and the coach journey was a highlight! They had a wonderful day at Tuesley Farm where they picked strawberries, found out about how the fruit is packaged, and had a tractor ride around the farm, even enjoying the playground too! They returned loaded up with crates of strawberries to take home and share in school.

And our Year 6 children had an amazing four days at Henley Fort in Guildford in late June. After having their 2020 autumn residential visit postponed and then cancelled, they were delighted to have the chance finally to get away. They have been staying in yurts at Henley Fort Outdoor Education site off the Hog's Back with amazing views over Guildford.



The children packed so much into four full days; archery, orienteering, climbing, team building, a whole day of WW2 learning, being part of the Home Guard and ARP Wardens, a day on the water, paddle boarding, canoeing, and mastering a canal boat. The food was delicious and everyone was very well-fed! Well done Year 6.

Elizabeth Higgins, head teacher



LOCAL NEWS

Record Breaking YEAR for ST HILARY'S

Pupils in Year 6 at St Hilary's School celebrated an outstanding set of Senior School offers and scholarships. This year, a total of 82 offers were received from 18 different schools, including a wide range of different schools including both day, flexi and full boarding, single sex and co-educational, close to home and further afield. Despite the backdrop of the pandemic, lockdowns, and rapidly changing entrance exam processes, the pupils were awarded the greatest number of prestigious scholarships that St Hilary's has ever seen.



A total of 33 scholarships and awards were offered to the pupils – a significant increase on previous years. The scholarships included Academic Awards as well Art, Drama, Music and Sport.

Headmistress Jane Whittingham said 'We are incredibly proud of all the pupils. I am delighted that their hard work and talent has been recognised.'

Hydon HILL

Residents at local Leonard Cheshire Home, Hydon Hill, made the most of the summer weather and their beautiful garden. Here they are, pictured on 10th June, listening to Rob entertaining them on the keyboard.



SUMMER WORSHIP at Godalming Bandstand



Every summer (weather permitting, which this year it didn't) Churches Together holds a service at the bandstand, as part of Godalming Staycation. All the local churches are encouraged to shut up shop and join us for worship *al fresco*. We are always thrilled when passers-by, with their children or dogs (or both) join us and stay for refreshments afterwards.

This year the weather on Sunday 8th August was wet and inhospitable, so we moved indoors to Godalming Parish Church (pictured left). It was

wonderful to be able to sing again, and the parish church is large enough to allow those who wish to remain distanced to do so. Over a hundred people came, took part in a joyous act of worship and then went to The Cellar Camino Café (pictured bottom left) for refreshments.



Huge thanks to the Reverend John Harkin for his hospitality, and the Cellar Camino Café for theirs. A few photos give a flavour of the morning. We hope to see you there next year!



Margot Spencer





**Emery &
Orchard**
ESTATE AGENTS

Passionate about property

SINCE 1993



EMERY & ORCHARD

Godalming's **Local Independent Agent**
Established for over **25 years.**

Property to sell in Godalming
or the Villages?

Then contact Tony Emery
or Jeremy Orchard on
01483 419 300
to arrange a
Free Market
Valuation.

20 High Street
Godalming
GU7 1EB

www.emery-orchard.co.uk



Cranleigh Tiles & Bathrooms

246 High Street, Cranleigh, GU6 8RL



Whatever the budget, from non-branded basics and essentials to more sophisticated designer products, our family-run bathroom showroom led by Craig Cooper is here to help.

We offer free, no obligation estimates and advice on everything bathroom related.

Bathroom Essentials • Showers • Toilets & Washbasins • Baths
Wet Rooms • Lighting • Tiles & Flooring
Design & Installation Available

Open Monday to Friday
10am to 4pm for appointments

All enquiries warmly welcomed but in order to promote safe shopping please can we ask you to book an appointment prior to your visit.

Telephone 01483 272727 or 07539 145513
craig@cranleighbathroomstudios.co.uk
www.cranleighbathroomstudios.co.uk

50th BIRTHDAY Celebrations!



At last Busbridge Evening WI were able to celebrate our 50th Birthday! How wonderful it was for thirty of us to gather together outside in June and to see each other face to face. Zoom calls are better than nothing, but don't come close to actually being with your friends. Ann welcomed us all and reminisced about the start of Busbridge Evening WI in June 1970; the long waiting list to join, and the many varied activities that we had enjoyed over the last fifty years. It was especially pleasing to have four founder Members with us at the party - Althea Dorey, Ellen Musk, Collette Giles and Margaret Swanton.

The Committee did us proud with a tasty selection of cocktails, mocktails and canapes, followed by strawberries and cream. The food highlight of course, was the superb 50th birthday cake, baked by Carol and cut by Ann to the singing of Happy Birthday. We were able to deliver a piece to all those who were unable to attend.

It was very special to hear chatter and laughter drifting across the garden - so normal - so missed.



~~Old memories~~ New memories

Ready for the best years
of your life?



**Only you
know when
you're ready.**

When it feels like
the right time to
embrace the best
years of your life...

**...our retirement
village will be
ready when
you are.**

**BRAMSHOTT
— PLACE —**

Inspired in Hampshire

Visit safely today!
Call 01428 788 250 or
visit bramshottplace.co.uk

Ready for your *best* years?

GODALMING MUSEUM



Congratulations to Godalming Museum celebrating its Centenary Year in 2021. 100 years ago, in January 1921 the former Borough of Godalming founded a public museum in

Godalming's Old Town Hall, also known as The Pepperpot. Although the museum's collection is now looked after by The Godalming Museum Trust, in 2017 the town's museum service returned to its local roots when Godalming Town Council took responsibility for the museum building & staff. The museum is now housed in its 15th century timber-framed building and going strong.

Editor's note : I've been particularly enjoying online photographs of Godalming's independent traders with pictures of shops past and present. Take a look at :

<https://www.facebook.com/GodalmingMuseum>



Busbridge Parish Register

BAPTISMS

11th July

Florence Hyde

1st August

Skyлар Reynolds

Charlie Warren-Upham

WEDDINGS

24th July

Megan Hawkey & Nicholas Mallinson



A Total TRANSFORMATION

Local residents may have spotted what seems to be a proliferation of native ragwort (left) this year in verges, gardens and local fields. This tall plant with yellow daisy-like flowers is not universally loved and can be harmful to horses and livestock, but outside of paddocks it can provide valuable food and a home to dozens of species of bees and insects. Eagle eyed local residents may have spotted these distinctive yellow and black caterpillars on ragwort wondering what they will turn into?



Minster Field

The result - the strikingly beautiful cinnabar moth with its red and black wings!



Appletree Close



St Hilary's

Preparatory School & Nursery, Godalming

Boys & Girls
Ages 2—11



Independent Prep School of the Year 2020



Open Morning on 18th September, 1st and 2nd October
Personal Tours by Arrangement

www.sthilarysschool.com • Tel: 01483 416551 • Email: registrar@sthilarysschool.com



@StHilarysSchool



@sthilarysschool



St Hilarys School Trust



Russell's Hedges & Tree Care

Tree felling • Reductions • Pruning • Crown Lifting
Thinning • Hedges • Stump Grinding

Fully Qualified & Insured

Russell Beddard

Tel: 01483 208161 Mob: 07722 506720

Email: rsgservices@outlook.com



Early July saw the Godalming College Arts Festival, with exhibitions from Art, Textiles, Photography, Graphic Design and 3D design. Owing to the pandemic this year, unfortunately it wasn't open for public view although parents were invited to attend. The inspirational work was even more remarkable, given that the students had not had the full use of

college equipment for some of the year. Congratulations to Alex Phocas who was the overall winner of the London Met Photography Competition (for students of photography and visual arts studying in full-time education in the UK). Alex won the Your Places Category with his photograph of a 'solargraph' (bottom of page) in which he explored older photography techniques, making use in particular of pinhole photography.



Right : Libbi Weaver



How we Coped with COVID-19



When the Town Clerk called a staff meeting on 16 March 2020, the Covid-19 restrictions had not yet been announced. However staff reviewed and adapted the council's business continuity plans so services could continue during the pandemic and subsequent lockdown. Undoubtedly, work undertaken to achieve the Quality Award from the Local Councils' Award Scheme was pivotal in being able to react so quickly to the changing environment. The Council was able to swiftly execute contingency arrangements to continue to serve the town, the community, and to protect those who were most vulnerable. Along with cancelling community events planned for the next 3 months, including the VE-Day 75, a 3 day weekend of commemorations, it was clear that not only our Museum would need to close, to safeguard staff, volunteers and visitors, but also the town's community centres. Communications were key to engaging the community with the Council. Using its Social

Media presence together with its website, the Council engaged on a daily basis with residents to relay appropriate local information and messages.



HRH Prince Edward, Earl of Wessex spent a morning helping the volunteers in the store on a Trolley Tuesday in June

One of the more worrying aspects was the number of residents who suddenly found themselves redundant, furloughed or waiting for Universal Credit. An established Food Bank at St Mark's was already in place but it was clear that with a rising need there would need to be a wider strategy to support the Food Bank and provide solutions for those facing, probably for the first time ever, food insecurity. When the Godalming & Farncombe Coronavirus Assistance Group, a Facebook community

group, approached the Council for support for the Food Bank, no one could have imagined that just four days later Godalming would be establishing a Community Food Store at the Wilfrid Noyce Centre or how vital it would become. Trolley Tuesdays were supported by local residents, restaurants and businesses who donated everything from eggs, fresh fruit, and bread, to toothbrushes and personal hygiene products. Godalming Community Fridge stepped up to help and collected food donations from far and wide. The Town Council agreed to continue to support the Community Store both during the pandemic and into the future. Since opening the Community Store has provided over 38,000 days-worth of food and hygiene products to the community.

A variety of challenges arose during the initial Covid-19 Crisis. Efforts were focussed on the wellbeing of our community, and as a burial authority, the provision of bereavement services witnessed 30% of the normal annual number of burials being conducted within a

Whilst the crisis unfolded, it became clear that areas of our community were in need of help, particularly with the apparent shortage of PPE for some of the residential homes in the area.

The Town Council provided a grant to buy raw materials for a local secondary school, whose staff and pupils of key workers were making PPE visors for local key workers.



Key workers at the Meath



*Broadwater School making PPE
Visors*

ten-day period. With their existing burial ground full, the Council provided support to the Ahmadiyya Muslim Association whose World HQ is just outside of Godalming. Working with Pear Tree Technology, 500 new grave spaces within one of Godalming's cemeteries were quickly remapped towards the direction of Mecca.

Godalming Town Council's planned move to new offices had to be placed on hold and there were the challenges of holding virtual council meetings. Financially the Council saw its income plummet, but through careful management was able to avoid cutting services.

Over the first weekend of the lockdown council staff began putting together a Stay in Place Support Online Directory, providing details of opening arrangements for local medical, dental and pharmacy facilities and business information on who would deliver food produce, takeaways, and other goods and services to the local community.

As restrictions were eased Godalming Town Council continued to support and reassure both residents and businesses by putting clear social distancing protocols in place, rainbow pavement markings, clear signage, hand sanitiser stations and a pedestrianised high street during peak times.

Although the Farncombe Day Centre had to close to its regular clients, it stepped in to assist the Borough Council and operated the Community Meals Delivery Service. With the support of a grant from Godalming Town Council to purchase a Heat Sealing Machine, all through the lockdowns the day centre staff were able to provide a freshly cooked 2-course meal to some of the most vulnerable in our community.

In meeting its commitment to support those most effected by the pandemic, the Town Council provided support to local Rotary clubs with a £5,000 grant to assist with setting up a Waverley Covid

Support Fund. The council also provided support for a local Job Club Scheme. As restrictions ease, Godalming Town Council not only continues to support the recovery from the effects of the pandemic on some of the most vulnerable members of the community, but is also planning for the future of the town and the well-being of its citizens, especially its young citizens.

Suzie Gortler

OPEN EVENTS 2021

Tuesday 28th September

Thursday 21st October

Tuesday 23rd November

admissions@stcatherines.info



St Catherine's, Bramley

GSA Day & Boarding School since 1885 | 4 - 18 years

Guildford GU5 0DF | www.stcatherines.info

admissions@stcatherines.info

Fully Insured

Fully Qualified

Corrective
Surgery

Reducing

Pruning

Thinning



Felling

Dismantling

Hedge
Trimming

Stump Grinding

Julian Draper NCH Arb

Tel 01428 681978 Mob 07968 827711

forkingbranches@hotmail.com

Busbridge Infant SCHOOL

Governor Opportunities

Busbridge Infant School is currently looking for two enthusiastic and committed co-opted governors to join

our dedicated and friendly governing body. No previous experience is required as we provide access to full training as well as support from a buddy. A commitment to securing the best education for our pupils, the willingness to learn and the ability to support and challenge constructively are the key things we're looking for. We meet four times a year as a full governing body and governors also take on a range of specific roles according to their skill set and availability. We encourage all governors to visit at least once a term to see the school in action.

It is an exciting time for the school as we welcome our new head teacher, Mr Darren Heatley, into post. If you are interested in getting involved and supporting this next phase of the school's journey, please do get in touch with Jo Thomas, our Chair of Governors (chair@busbridge-infant.surrey.sch.uk), for an informal conversation about the role.

A Warm WELCOME

Congratulations to Rev Patrick Samuels (right) on his ordination at Guildford Cathedral on Sunday 4th July. Patrick is our new Curate at Busbridge & Hambledon Church and we warmly welcome him.



HYDESTILE RESIDENT ANIMALS

would welcome the following donations:



- ⇒ Cat and dog food (wet or dry) and/or biscuits
- ⇒ Bird food (seeds or nuts)
- ⇒ Fruit, vegetables (grapes, pears, apples, cabbage, carrots)
- ⇒ Cat litter
- ⇒ Unused animal medication
- ⇒ Cleaning products such as bleach, surface disinfectant, sanitizer, fairy liquid, laundry liquid/pods, J-cloths, baby wipes, fabric softener (hedgehogs love it !),
- ⇒ Toilet rolls, kitchen rolls, boxes of tissues
- ⇒ Dustpans, brushes, brooms

Due to COVID restrictions, we are unable to have reception open as usual but there is a wheelie bin for donations outside. The best time to deliver is 9am-1pm 7 days a week.

If you would like a newsletter, please ring our main telephone number on arrival at the gate.

With grateful thanks,

Lyn, Graham and all at **Hydestile Resident Animals**
Nutwood Cottage, New Road, Hydestile,
Nr Godalming, GU8 4DJ Tel 01483 860313



What would You do if you met your Old Self?

Have you ever looked into an utterly still, serene pond without a ripple on the surface? What struck you?

I did this once when on a walking party up Cader Idris in Wales. What struck me was not my face but the immense expanse of the sky which filled the pond surface. And then some bright spark in the group threw a huge rock in the lake, the ripples roared into life and the moment of enormity was lost. The stillness was replaced by movement.

We've had a strangely still 18 months globally and locally. It has tested endurance to the limit. Now huge boulders of uncertain change are sweeping in and even as I write this in August I do not know if its message will be relevant or timely in September.

There are several stages to disaster response. Three of the more well known are rescue (immediate aftermath), recovery (the next couple of years) and then... it depends what happens next. In some situations there is a third stage. It can be reconstruction- back to the old ways – or a good and permanent change – restoration and renewal.

The problem with back to the old ways is that they don't create resilience for the future. Recovery that leads to reconstruction what went before means losing the best of new relationships, closer community and changed pace of life. It loses the 18 months of stillness and reflection that has led many people to consider deep things. It is like the ripples have roared back into life and now we move on. We do need to have movement and alongside this it would also be great to keep the best of the deepest thing we've been considering in our souls. The choice is ours.

As a church and local community we have innovated and experimented. The rescue phase appears to be over. I hope and pray that we are less eager to leap into reconstruction of former things and instead to wade into renewal. Renewal is a deeply spiritual word. A 19th Century preacher once said "If you are renewed... and were to meet your old self, I am sure you would be very anxious to get out of his [sic] company." (Rev Charles Spurgeon).

As we look to the future my hope and prayer under God is that we'll find that the good Lord has brought us to a softer, humbler, contrite and generous place. Throughout September we're gathering as a church each Sunday to be a community that seeks renewal and to remember that while we seem to be recovering in the UK there are many elsewhere in the world who have yet to benefit as much as we have. You are warmly welcome to join us in person or online.

Simon Taylor, Rector

SUNDAYS AT BUSBRIDGE CHURCH

September & October

9.15AM Classic Service

A structured but informal service following **Common Worship**, including well-known hymns, and space for listening and reflecting.

Holy Communion on 1st Sundays of the month.

10.30AM

Contemporary Service

(Not 1st Sundays). Informal, topical, interview style. Contemporary worship with band led music. Communion 4th Sundays.

Children's groups run 2nd and 4th Sundays. Children's Worship in the Old Rectory Gardens runs alongside Contemporary on 3rd Sundays (19 Sep & 17 Oct).

Children must be accompanied by an adult.

6PM Evening Service

1st and 3rd Sundays of the month: 5 & 19 Sep, 3 and 17 Oct

With communion on 3rd Sundays: 19/9 & 17/10.

Unplugged Youth Service on 4th Sundays: 26 Sep & 24 Oct.

NEW! Muddy Church—pilot launching 3 October

Muddy Church is a place for wandering and wondering about God. Outdoor and active, nature loving for families with 0-11s, 10.30AM on 1st Sundays of the month.

Locations will vary: 3/10 Busbridge, 7/11 Hambledon

Dates for the diary

Harvest 10 October—celebrated in all services.

Remembrance Sunday 14 November—10.30AM at Busbridge Church.

[See website for details.](#)



SCAN ME



SERVICES UPDATE (as of 19 July) *Singing is now permitted!*

Those attending services are requested to wear a face covering. Social distancing is optional, and there is an area reserved for those who wish to keep 2m from others. Sanitisation stations are in place. Services at both Busbridge and Hambledon churches continue to be broadcast live on YouTube. See: www.bhcgodalming.org for details.



BHC Godalming

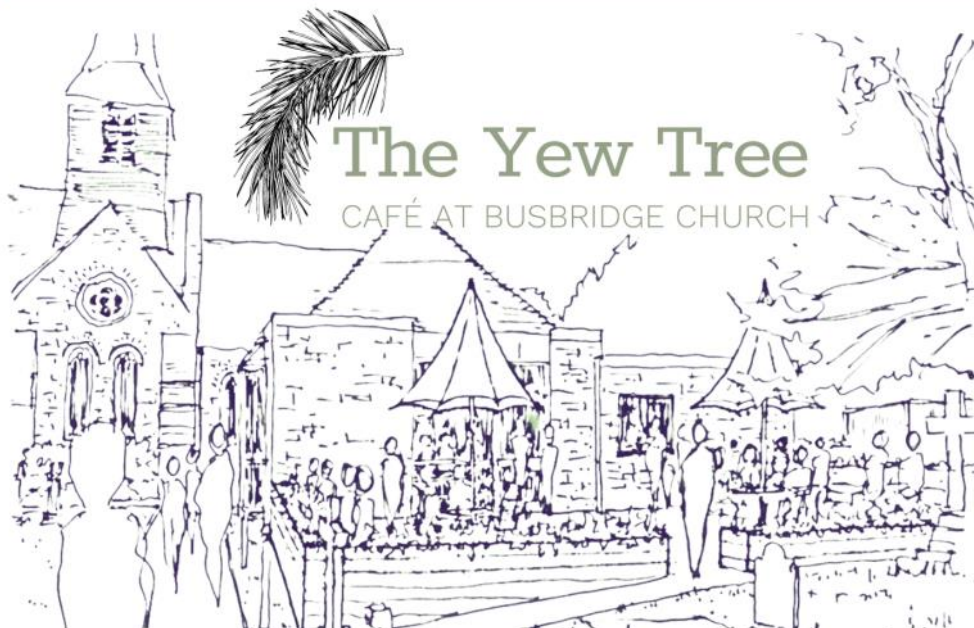
www.youtube.com/bhcgodalmingonline



SCAN ME

Opening in Busbridge soon

See: www.bhcgodalming.org/yew-tree-cafe



Building work began in July to convert the Busbridge Centre off Hambledon Road, (built in 1975), and create a not for profit café for church activities, the local community and passers-by. The vision for the Yew Tree Café is to provide a church and community space that cultivates friendship, and delivers a high quality service to all visitors with an atmosphere of pastoral care. The Yew Tree Café (named for the surrounding trees in the churchyard) will serve barista coffee, light lunches, snacks and beverages. There will be seating inside, and outside on the extended deck. We hope that the café will be ready to open by the end of the year; thereafter opening Monday to Saturday 8.30am – 4.30pm, and available in the evenings for use by church groups. Use the link or QR code above to find out more and watch a short video about the project. You can also call the Church office on 01483 421297 or email the Cafe Management Team via church.office@bhcgodalming.org

WE'RE HIRING! The role of Café Manager was advertised in August and the Centre Management team will also be advertising for the role of Assistant Café Manager shortly. Please use the link or QR code above to find out more and check the status of these roles.



The Yew Tree
CAFÉ AT BUSBRIDGE CHURCH

Now Hiring!

COULD YOU BRING THE VISION FOR THE YEW TREE CAFÉ TO LIFE, AND OVERSEE THE DELIVERY OF EXCELLENT COFFEE, FOOD AND SERVICE TO OUR ACTIVE CHURCH AND LOCAL COMMUNITY?

Busbridge&Hambledon Church seeks an experienced manager for its new café at Busbridge Church.

Full time (37 hours), starting Autumn 2021.

All details on
bhcgodalming.org/yew-tree-cafe



Use the QR to watch this short video to find out about the project from a member of the Centre Development Team



busbridge&hambledonchurch 
loving God • making disciples • transforming communities

Open Mornings

Tuesday 21st September 2021

Wednesday 13th October 2021

Reception Entry Taster Afternoon

Friday 1st October 2021

Reception Entry Play Assessments

Saturday 16th October 2021

prepadmissions@stcatherines.info



St Catherine's Prep, Bramley

GSA Day & Boarding School since 1885 | 4 - 18 years

Guildford GU5 0DF | www.stcatherines.info

Computer Repairs



- ✓ Desktop & Laptop Repairs
- ✓ Wireless & Wired Networking
- ✓ PC Upgrades & Tune Ups
- ✓ Virus & Spyware Removal
- ✓ Data Backup & Recovery
- ✓ Server Support



ONSITE REPAIR OR COLLECTION
PROFESSIONAL AND RELIABLE SERVICE
RESIDENTIAL & BUSINESS CUSTOMERS ARE WELCOME



WE ALSO BUY OR REPAIR YOUR

BROKEN IPADS &
MACBOOK LAPTOPS



REASONABLE PRICES AND FAST TURNAROUND

07809 401721 01483 419468

www.TechGuy.biz michael@TechGuy.biz

A J Bennewith & Co

CHARTERED ACCOUNTANTS

We are an independent practice
that has been offering a personal
service for over 30 years

Contact us for all your
accounting needs, tax needs
and a free initial consultation

Registered Auditors
Personal Tax Returns
Companies & Charities

Tel: 01483 539 777
www.bennewith.co.uk





SWEET POTATO *Falafel*

Sweet Potato makes a light and fluffy falafel, and they are vegan too! Makes 25-30.

1 Roast or microwave the potatoes in their jackets until cooked through.

2 Mash the drained chickpeas in a bowl with a fork or potato masher, then mix with the chickpeas. Add all the other ingredients except the sesame seeds and mix well. Taste and add a little more seasoning if needed.

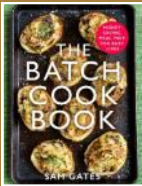
3 Using your hands, roll the mixture into equal, walnut-sized balls and place on a baking tray lined with greaseproof paper or a re-usable baking sheet.

4 If you're baking them now, heat the oven to 200°/180°C fan/gas 6. Brush the falafels with a little oil, sprinkle with sesame seeds and bake for 25-30 minutes until nicely crispy on the outside, turning half way through the cooking time.




INGREDIENTS

700g whole sweet potatoes
400ml tin chickpeas, drained and rinsed
3 tbsp. plain flour
2 tsp. ground cumin
4 tbsp. finely chopped fresh coriander
3 tbsp. lemon juice
½ tsp. salt
Black pepper
Olive oil for greasing
1tbsp. sesame seeds



Sam's latest book *The Batch Cookbook* is out now.

 [samgatesfood](https://www.instagram.com/samgatesfood)

 [@samgatesfood](https://twitter.com/samgatesfood)

 www.samgatesfood.co.uk





Sunrise: A Great Place to Call Home

Living in a residential care community like Sunrise, it's literally home-from-home. Every resident is encouraged to bring in their own furniture, and their pets. High quality care and support is provided in an environment where residents can make new friends and enjoy a variety of events.

Our programme of activities each day offers a full social life, from musical entertainment to a pub quiz, tea dance to art and crafts, games to flower arranging.

Join in as much or as little as you like – our desire is that residents live a happy life that suits them.

Call us on
01483 604099
to book a tour.

Sunrise of Guildford
Astolat Way, Peasmarsh,
Guildford, Surrey GU3 1NE
SunriseGuildford.co.uk



SUNRISE
SENIOR LIVING
GUILDFORD

Love to Sing?



Vivace Chorus welcomes new members to its large, friendly choir.

With a wide, diverse repertoire and a reputation for excellence, they perform at venues such as Guildford's G Live & the Royal Albert Hall. Rehearsals restart on **Monday evenings from 6 Sept 2021 in central Guildford.**

See www.vivacechorus.org for full details.

Performing a wide range of traditional and modern choral music with professional orchestras and soloists. Upcoming concerts include Elgar's Dream of Gerontius and Best of Broadway!

busbridge&hambledonchurch 

Help & Support

Abuse Support

Call Surrey Against Domestic Abuse 01483 776822 – safety number; if you would prefer to make a call to the church (01483 421267), then we'd be willing to take some discreet information for you and act with you.

If your situation is threatening please ring 999.

Financial Relief

Our church charity CFSF (Church Family Support Fund) has been quietly giving financial gifts to people in need and are always grateful to know of anyone in the wider community needing this support. See www.bhcgodalming.org/c19-givingandsupport or t: 01483 421267 to let us know of someone in total confidence.

COVID-19 Support

Help with shopping, urgent supplies or a friendly phone call. Email: coronaresponse@bhcgodalming.org or t: 01483 421267

'UP WHERE WE BELONG'
a celebration of live performance

The Borough Hall, Godalming
Sunday 12th September 2021
Performances at 2.30pm and 7.00pm

Featuring performers from across the ArtGodalming community

All proceeds will be donated to **Skillway** and **The Cellar Camino Cafe**

"Up Where We Belong" reunites performers with audiences, bringing together the local Godalming community in shared applause whilst raising funds for local charities.

Book at:
thelittleboxoffice.com/gtg



www.samaritans.org

You can call them free on 116 123
or email them at
jo@samaritans.org

Whoever you are and whatever you're facing, they won't judge you or tell you what to do. They're here to listen so you don't have to face it alone.

When life is difficult, Samaritans are here – day or night, 365 days a year



LONGACRE SCHOOL

INDEPENDENT PREPARATORY SCHOOL
FOR BOYS AND GIRLS AGE 2-11 YEARS

www.longacreschool.co.uk

Hullbrook Lane
Shamley Green
Guildford, Surrey
GU5 0NQ

WINNER
INDEPENDENT SCHOOLS OF THE YEAR 2020
Independent Preparatory

BREWIN DOLPHIN

OPEN DAY
24th SEPT

9.30 - 12.00



Watch our video

#ReadyForTheNextAdventure

Allford

BESPOKE
CABINET
MAKERS
Interiors

For beautiful, bespoke, fitted or freestanding furniture, Allford Interiors designs and hand crafts innovative solutions for all our clients.

We collaborate closely with you from conception to completion. Each commission is personally designed, created and installed from our workshop in Milford.

Previous commissions include kitchens, studies, bedroom and bathroom furniture, bookcases and creative storage solutions.

Using solid timber or high-quality man-made materials, we can create anything from traditional shaker style furniture to unique contemporary pieces.

For a free design consultation, contact Stephen Allford on 07723717897 or for more information see www.allford.co.uk

R. & R. Roofing

Guildford

Roofing Contractor & General Builder



- NEW ROOFS & REPAIRS
- CHIMNEY POINTING & REBUILD
- SLATING • TILING
- HIGH PERFORMANCE TORCH-ON FELTS
- FLAT ROOFS • LEAD WORK
- GUTTERING • uPVC FASCIAS & SOFFITS
- EXTERIOR MAINTENANCE

FREE ESTIMATES EMERGENCY SERVICE

01932 344660

07956 554604

7 Rivermead Byfleet KT14 7BZ

Email: russ@rr-roofing.co.uk



GODALMING CHORAL SOCIETY

Invite you to Lift your Spirits and Raise the Roof!

This lively, warm and welcoming choir is returning to sing in person after the long Lockdown break and would love you to join them in joyful song!

A good core of singers have continued to sing via Zoom, led by our very talented conductor, Sam Hayes, training us to be the best we can, and are keen to meet and rehearse again in person. The choir welcomes singers in all voice parts with no formal audition, though some experience is preferred and you need to enjoy a range of choral music.

Plans include a concert of **Mozart and Salieri on 30th October**, a **Come and Sing Day on 2nd October** featuring Handel's Messiah Part 1 and a **Christmas concert on 4th December** including that, plus Dvorak, Richard Shephard and various carols.

The Wilfrid Noyce Centre in central Godalming makes an excellent rehearsal venue with a helpful acoustic, a good piano for our gifted accompanist Suzy Ruffles, and easy parking.

Join us on Tuesday 7th September at 7.30pm.

For more details e-mail secretary@godalmingchoral.org.uk or go to www.godalmingchoral.org.uk



BUSBRIDGE EVENING WI

Our monthly meetings are held on the 2nd Tuesday of each month, *intending*

to return to Busbridge Village Hall in September. Meetings will start at 8pm.

Contact: Ann Heward 01483 420360

Tuesday 14th September

Judith Hill will give a talk entitled, 'Marianne North, A Victorian Lady Traveller & her gallery at Kew Gardens'

Tuesday 12th October

Julie Mottishaw from the Surrey Dormouse Group will give an illustrated talk on the work the group does to protect and preserve the endangered hazel dormouse



Short Mat Bowls

A short mat bowls group has been meeting in St. Mark's Community Centre (GU7 2LD) on a **Thursday afternoon** for 15 years. With a recent revised constitution it is now open to any retired or semi-retired person, preferably living in the immediate area but also from the surrounding area. Transport can only be offered in exceptional circumstances. New members will be welcome; we start again on Thursday, 2nd September at 2pm.

Gillian Martin (secretary)
01483 429640



Busbridge Design & Build

www.busbridgedesignbuild.co.uk

07968 022526

Your local firm, specialising in high quality new-builds, extensions, refurbishment and all other aspects of building works

Offering exceptional levels of service & attention to detail at competitive prices

Excellent local references and referrals

Contact us today for a quotation or to discuss your requirements



Donline
COMPUTER
CONSULTANCY



Donline offers professional computer engineering services to: Small Business, Home Office, & Home Users.

Donline can assist with all of your IT requirements: Supply & installation of hardware and software, upgrades, networking, system and data recovery, printing, security, cloud computing, technical support and training.

Call: Don Tocher, on
07870-643486 or 02392-989594



Microsoft
CERTIFIED
Systems Engineer

Or contact Donline, online:
Web: www.donline.co.uk
Email: don@donline.co.uk

RB Carpentry & Joinery



Cabinetry,
Carpentry &
Joinery

Kitchen Fitting

General Property
Maintenance

40 years
experience

References
available

Busbridge based

Contact :
Rob Beasley
0797 7944162

Pilates in Milford

Mondays: 9:30 am and 10:35 am
Location: BURTON PAVILION



- Pilates to strengthen the core stability muscles
- Improves posture, balance & co-ordination
- Relieves tension and stress
- Tones muscles and prevents injury
- Complements other exercise & relaxes
- Pre- & postnatal conditioning

A great way to get in shape. Easy to learn.

To register call 07767 811074
Or visit www.westsurreypilates.co.uk

Helen Roberts, Chartered Physiotherapist
MCSP, DipAPPhysSport HPC, APPI

We all enjoyed our August guided tour round Guildford, learning about 'Leading Lights' –actors, authors and artists associated with the town. We even met 'Yvonne Arnaud' at the theatre named after her. Then we took shelter from the rain and enjoyed lovely refreshments in the welcoming Open Grounds café at Millmead Baptist Church.



To begin our autumn term, on **Thursday 9th September**, we're delighted that **Charli Quay-Barnham**, Head of Fundraising, will come and talk to us on '**Phyllis Tuckwell: Because Every Day is Precious**'. Phyllis Tuckwell is our chosen charity for 2021, so it would be good to have a 'full house' to hear about the vital work done by the team, both at the Hospice and in people's homes; and how we might help. We'll be meeting in the **Old Rectory at 8.00pm!** It will be so good to see each other face to face again and catch up with friends over a glass of wine before Charli starts her presentation. **All are welcome**, including men if they'd like to join us!

On **Thursday 7th October**, we'll be treated to a cookery demonstration, by **Elizabeth Silver**, on preparing **Autumnal Delights**. Elizabeth did a demonstration for Nexus once before, which everyone really enjoyed. Whilst she trained as a Home Economist and Professional Cook, Elizabeth is now more involved in fitness instruction, but still loves to cook! Come along to the **Old Rectory at 8.00pm** to watch and learn. No doubt we'll get to taste the delights she has produced! It should be a fun evening.

Our talk on **Thursday 4th November** is by Guildford Historian, **David Rose**, about '**Guildford's Lost Shops**'. David's talks are always fascinating and, whilst his focus will be on historical lost shops, he will doubtless say something about more recent shop closures, following the pandemic! Do join us in the **Old Rectory at 8.00pm**.

As we return to live meetings, there will be a visitor fee of £5.00 for non-members to cover refreshments, gifts or fees for speakers and charity donations. We look forward to seeing you at any or all these meetings! **All are very welcome!**

Our charity for 2021 is: **Phyllis Tuckwell Hospice Care**

For more information please phone Janet Harvey on 423264 or Kate Kaye on 415296 or find us on www.bhcgodalming.org/groups



HEARING AID CLINICS

If your hearing aids are in need of maintenance, then please do contact Penny Naylor via the Church Office on **01483 421267** or email penny.naylor@bhcgodalming.org in order to arrange an appointment and for up to date information regarding clinics. Please note that Community Hearing Champions are only able to provide service for NHS-issued hearing aids.

Honey Landscapes

Garden Maintenance and Construction



Patios & Drives • Hedges
Stonework & Brickwork
Fencing • Planting
Lawns large or small
Turving & Seeding

Tel: 07952915547
honeylandscapes@gmail.com

TUSCAN VILLA

Available for holiday lets

*Between San Gimignano
and Volterra*

Recently restored Separate Barn
Sleeps 3/4

Beautiful large secluded villa
In gardens of one hectare
Sleeps 8/10

4 large double bedrooms

2 large sitting rooms
Study, dining room, utility
kitchen/diner

4 bath/shower rooms
15 x 6m infinity pool
Tennis court

www.ilcolto.co.uk

Tel: 01483 808105 or
theresalove44@yahoo.co.uk

Paul Clifford
Property Services
Qualified "Part P" Electrician
B-Tec Trained Plumber
Plumbing Electrical
Kitchens Bathrooms
Any job from a refit to a washer or fuse
Fully Insured References Available

Paulclifford60@gmail.com 07889 073853



A free phone line of hymns,
reflections and prayers

Fed up with Ironing?
Let the **Ironing Fairy**
do it for you!



You are not alone!

Ironing is the most dreaded household chore.
We regularly heard people wishing for a "ironing fairy"
to take it off their hands, which is why we started our
business.

Why choose us?

- ✓ Free collection & delivery
- ✓ Turnaround in 48 hours
- ✓ Professional service

We can work around you

Whether you require a regular weekly or 'on demand'
ironing service.

01483 428044 07809 401794

www.ironingfairy.net





The Godalming Film Society are extremely happy to announce the start of their 15th season and plan to return to the **Borough Hall in Godalming** to screen films in-venue from Tuesday 7 September 2021. We are a members-only society which celebrates cinema by screening films that are rarely seen on the main circuit, with an emphasis on world cinema. There will be a new line up of 18 films this season - all on **Tuesdays at the usual time of 7:45 pm.**

For the 15th season we have a wonderful selection of films to show – classics new and old such as The Umbrellas of Cherbourg and Minari; films from the UK, Iceland, Japan, and more.

If you would like to join or re-join, please download the membership form from the website, fill it out and email back to us at members@godalmingfilmsoc.org.uk Membership is £35 for the year and gives you entry to all streaming / screenings of our films. It is open to anyone over the age of 16 and membership is not transferable.

Should we have to return to streaming films and you no longer wish to remain a member, we will be happy, should you wish us to, refund the relevant portion of your membership fee.

For more information please contact Michael O'Sullivan mosullivan03@gmail.com



godalmingfilmsoc.org.uk

Old Godhelman Association REUNION 2021

The 2021 Old Godhelman Association (OGA) Reunion is planned at Godalming College, on **9th October** from 11.00am to 4.30pm followed by a get-together from 4.30pm to 11.00pm at The Inn on the Lake, Godalming.

The OGA is the official organisation for the former pupils of Godalming County Grammar School. The main event will include a tour of the building, a two-course lunch and the opportunity to have both real and virtual meetings with school friends. There will be an opportunity for Zoom calls to people living far away or overseas or those unable to make the journey to Godalming.

For more information, please email Eleanor Andrews (evwandrews3@gmail.com) or visit the OGA website (theoga.org)

We ask you to please make sure that those people who are the focus in photos have given their consent to be included in our publication & on our website; in the case of minors we ask that this is parental consent. "The Bridge" would like to thank advertisers for their support, but to make clear to readers that it does not offer any endorsement of the goods or services advertised. Views expressed in the articles are not necessarily those of the Editor or Busbridge Church. The Editorial Team reserve the right to edit any articles submitted for consideration for publication.

EDITORIAL TEAM

Cathy Brook (Editor) 420633
Jacky Beale (Small Ads) 423768
Christine Payne 417320

Lorna Sherwin
Lesley Reeves (Treasurer) via email at:
bridgefunds@btinternet.com

Write to us:
c/o Church Office, The Old Rectory, Old
Rectory Gardens, Godalming GU7 1XB.
St John the Baptist Church
Rector: Rev Simon Taylor
01483 421267

COPY DATE

NOV/DEC 2021 EDITION

WED 20TH OCTOBER

PUBLICATION DATE: FRIDAY 5TH NOV

QUARRY HILL STORES

17 Quarry Hill



Paper Boys and Girls Required in Busbridge

Newspaper Delivery Service in Busbridge
Contact: Mr S. Patel

Tel: 01483 416938

Advertising

SMALL ADS are designed to advertise local services.

£5 per insert, 40 words maximum.

For Sale items £2,

20 words maximum.

Please contact Jacky at:

jackybeale@hotmail.com

DISPLAY ADVERTISING is for businesses who wish to advertise in full, half, quarter or eighth page format.

We deliver free of charge to over 1850 local homes. Please contact Cathy at:

editor.atthebridge@gmail.com

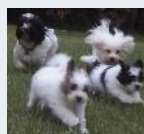
We reserve the right to decline advertising or payment for advertising at our discretion.

g b j @ home

Home boarding & day care for smaller dogs



We take care of them when you can't
Familiar local walks



Call
Lesley on 0752 1535 079
gbjathome@btinternet.com

Children can now enjoy exploring Godalming using the two new activity packs available at the Museum. Younger children can explore around the playground in the park by the river. Older children can stand at the Pepperpot and observe what they see around it. A donation to cover costs of the packs would be appreciated. The Museum has a new entrance opposite the Pepperpot.

Exhibitions at the museum will focus on local artist groups:



Until September 17th

STUDIO 12

September 21st to 9th
October

BROADWATER
ARTISTS

12th to 30th October

COMPTON
ARTISTS

There will be extended opening of the Museum for the Heritage Open weekend on 18th and 19th September.

Opening times are at present:

**Tuesdays, Wednesdays, Fridays and
Saturdays 10am to 4pm**

There are plans to open for a further day if possible. The Local Studies library is open on Tuesdays.

Please check the website

www.godalmingmuseum.org.uk



BUSBRIDGE CHURCH (ST JOHN THE BAPTIST)

OPEN FOR HERITAGE WEEKEND

SATURDAY 18TH &
SUNDAY 19TH
SEPTEMBER
1—4PM



This special little Victorian Gothic Revival church is a treasure trove of designs by the grand designers of the day. Designed by Sir George Gilbert Scott, it has a remarkable metal chancel screen by Edwin Lutyens, who also designed the WW1 memorial and the Jekyll family memorial. There are lovely stained glass windows by Edward Burne-Jones for Morris & Co. The cobbled paths may have been designed by Gertrude Jekyll, who was an active church member. The graveyard also has some interesting occupants. There will also be information on the graveyard and a quiz for children.

FREE .. just turn up

Busbridge Church, Brighton
Road, Godalming GU7 1XA



SMALL ADS

VERY LOCAL TOP QUALITY TWO YEAR OLD HARDWOOD LOGS FOR SALE. Felled & processed just a mile from centre of Busbridge. Pick-up load (1.2cm) £90, Dumpy bag (0.8cm) £70 delivered to your drive. **andrew4logs@hotmail.co.uk** or call Andrew on: **01483 424934** or **07952 429071**

GARDENER TRAINED WITH THE RHS, HARD WORKING AND RELIABLE. Will undertake weeding, pruning, mulching and bed work plus more from £20 per hour and medium hedge cutting service priced per job. Contact Matthew on **01483 421547**

Professional, confidential & sympathetic counselling

Gill Brennan

MBACP (Accred), FdA (Hons), BA (Hons)
07947 424 538
gillhbrennan@gmail.com
www.godalmingcounsellor.com



PC Doctor Godalming
Fixing computers of all shapes and sizes

If your computer is run down, unreliable and generally out of sorts then why not call for professional help and advice in your own home. All types of computer or network problems dealt with on a "No Fix No Fee" basis.



79 Pullman Lane, Godalming, GU7 1YB
Tel: 01483 424378 | 07876476990
email to: mike.lagan@pcdocgo.co.uk



MEMBER OF THE BRIDGE INSTITUTE



Karen Regan
Heart & Sole

KAREN REGAN DipFHP MCFHP MAFHP
MOBILE FOOT HEALTH PROFESSIONAL
WWW.HEARTANDSOLE.SITE
07776309567




Vanessa Edwards Hypnotherapy
Cognitive Hypnotherapist
DipChyp HPD NLPPrac

www.vanessaedwardshypnotherapy.co.uk
info@vanessaedwardshypnotherapy.co.uk
07523101952

I specialise in helping women with anxiety, stress, confidence issues and weight loss. I also work with phobias, OCD, bad habits, smoking, depression and insomnia.

If your issue is not listed here please contact me.



Printed by Linnerlake 07590 047750
www.linnerlake.co.uk
linnerlake@gmail.com



Looking to maintain your independence?
Your local home care agency is here to help



carers at home
maintaining your independence

Rated 'outstanding' for care by the Care Quality Commission

Call us today on
01483 899350

Registered office

Maple Suite
Guardian House
Borough Road
Godalming
GU7 2AE

Carers at Home Limited,
Registered in England & Wales no. 05938034

 @carersathomeuk

 @atcarers

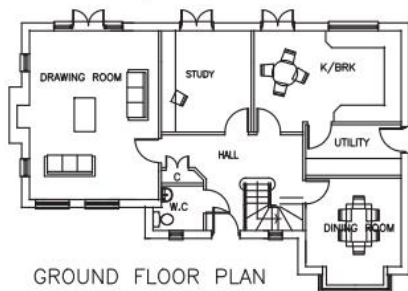
 @carersathomeuk

carersathome.com
info@carersathome.com

Carers at Home is registered with the Care Quality
Commission - CQC Provider ID 1-101644741



FRONT ELEVATION



GROUND FLOOR PLAN

PLANNING & DESIGN SERVICE LLP

Architectural drawings for
Extensions, Alterations &
New Build

Free No Obligation Quotations

Tel: 01483 417555
Mob: 07818 014357

www.architecturesurrey.co.uk
simonplanning.design@btinternet.com



Free valuations Monday-Friday:
9:30am-5pm

Ewbank's



Surrey and Hampshire's Premier Antique and Specialist Auctioneers

Jackanory: The Illustrations: 22 August
Stamps, Postcards & Collectables: 25 August
Trading Cards Auction: Pokemon & More: 25 August
Fine Wines & Spirits: 29 August
Vintage Posters: 31 August
Car Auction & The Transport Sale: 5 September
Jewellery, Watches & Coins: 15 September
Silver & Fine Art: 16 September
Antiques, Clocks, Books & Furniture: 17 September
Vintage Posters: 26 September
Country House Sale: 8 October

01483 223101

Accepting consignments now

Burnt Common Auction Rooms, London Road, Send, GU23 7LN
info@ewbanks.co.uk

www.ewbanks.co.uk