

# *The* Bridge

NOVEMBER & DECEMBER 2019

*Spanning the* COMMUNITY  
*in* Busbridge



[www.bhcgodalming.org/thebridge](http://www.bhcgodalming.org/thebridge)

# PRIOR'S FIELD

GODALMING SURREY



GSA Girls' Boarding and Day School 11-18

*'The unicorn of education' -  
the stuff of childhood dreams.*

- Tatler Schools Guide 2020



**A DISTINCTIVE ROUTE TO HIGH  
ACHIEVEMENT FOR YOUR DAUGHTER**

Call to book your place at our next Open Event:  
Open Day: Saturday 8 February 2020 10.00am - 1.00pm  
01483 81055 | [www.priorsfieldschool.com](http://www.priorsfieldschool.com)

#believe #achieve #succeed

Registered Charity No. 312038

# WHAT'S INSIDE

*The team at The Bridge would like to wish all local residents a very Merry Christmas.*



## PAGES 10–11 *Local Recycling*

Shedding further light on some of the recycling conundrums of our blue bins.

## PAGE 13 *A Chorister's Life*

Enjoying life in the Guildford Cathedral Choir.

## PAGES 16–17 *Our Rector Writes ...*

Busbridge Rector, Simon Taylor, celebrates hope this Christmas.

## PAGE 19 *All Wrapped Up*

Some fresh ideas for a different approach to gift wrap this Christmas.



## PAGES 20–21 *A French & Polish Christmas*

Learn how Christmas is celebrated by our neighbours on the continent; from gastronomic feasts to dancing until the early hours of the morning!

*And a very big thank you to all our road stewards for their invaluable help over the past year.*

FRONT COVER PHOTO: Remembrance Day at the Old Rectory, Busbridge, by kind courtesy of Chris Payne



Printed by Linnerlake 01483 452087

[www.linnerlake.co.uk](http://www.linnerlake.co.uk)

[linnerlake@gmail.com](mailto:linnerlake@gmail.com)

# NEWS & EVENTS *Round Up*



## Borough Hall RECYCLING Opportunities

A new recycling initiative is underway at Godalming Borough Hall, in Bridge Street (entrance opposite the Waitrose car park).

Through the Terracycle scheme, there is now an opportunity open to all local residents to recycle crisp packets, Pringles and certain oral care products. The recycling bins can be found on the far left in the front entrance.



*What can be recycled at the Borough Hall?*

### CRISP PACKETS

Crisp packets of all brands. Please ensure packets are fully empty. Crisp multipack outer packaging is accepted. Please do not fold the crisp packets into triangles.

### PRINGLES TUBES

Any size of empty Pringles® cans, not other brands  
Plastic lids on Pringles® cans.

### ORAL CARE PRODUCTS

Any brand of toothbrushes  
Any brand of empty toothpaste tubes and caps  
Any brand of electric and battery toothbrush heads  
Any brand of toothbrush outer packaging  
Any brand of empty toothpaste cartons  
For more details see: [www.electriceeth.co.uk/colgate-recycling-programme](http://www.electriceeth.co.uk/colgate-recycling-programme)

## Skillway BOOST

In our September/October edition of The Bridge we reported on local charity, Skillway. We have since learnt that the Bishop of Guildford's Communities Fund (BGCFF) has made a grant of £3,000 to Skillway. The Godalming-based Christian charity gives training in manual skills to small groups of disadvantaged teenagers. This training provides a skill for life and helps them to find employment, as well as instilling confidence and a sense of purpose.



# St Hilary's SCHOOL

## The HIVE



St Hilary's School announced the launch of its Lego Education Innovation Studio, The Hive at the start of the autumn term in September. It is one of only sixty across the country and most of these are only in senior schools, colleges & universities. The Hive was officially launched by The Mayor of Godalming, Cllr Penny Rivers and her consort Paul.



Mrs Jane Whittingham, Headmistress at St Hilary's commented "Our aim is to provide pupils with the opportunity to engage in 21<sup>st</sup> century skills including critical thinking, creativity, collaboration and communication, through a hands-on learning approach. This will be achieved through STEM (Science/Technology/Engineering/Mathematics) subjects using Lego Education 4C's learning approach of connect, construct, contemplate and continue. We are very grateful to the Friends of St Hilary's for their generous donation to The Hive."



St Hilary's will be working with Lego Education over the next three years to develop 'The Hive' as a hub for training educators and engaging children.

# Holloway HILL *Happenings*

Pictured left : Godalming Cricket Club celebrated the end of their successful season with a BBQ and awards evening on Saturday 28th September at Holloway Hill.



Pictured right : PrimeTime (see page 35) were warmly welcomed for a visit at Holloway Hill Bowling Club on Wednesday 21st August. The weather was as splendid as the tea afterwards!



## The Painted Lady

The summer of 2019 proved to be a once in a decade bumper year for the painted lady butterfly. The painted lady topped the chart as the most numerous species recorded in the 2019 Big Butterfly Count across the UK. This remarkable migrant is not in fact as delicate as first appears, clocking up a remarkable 7000 miles in her round trip—recently discovered as the longest migratory distance travelled by any butterfly.

This particular painted lady was spotted in the gardens at local Leonard Cheshire Home, Hydon Hill on 13th September.





Emery &  
Orchard  
ESTATE AGENTS

*Passionate about property*

SINCE 1993



EMERY & ORCHARD

Godalming's **Local Independent Agent**  
**Established** for over **25 years.**

Property to sell in Godalming  
or the Villages?

Then contact Tony Emery  
or Jeremy Orchard on  
**01483 419 300**  
to arrange a  
Free Market  
Valuation.

20 High Street  
Godalming  
GU7 1EB

[www.emery-orchard.co.uk](http://www.emery-orchard.co.uk)







Busbridge and Hambledon Church would like to introduce two new members of the team to the local community. Simon Willetts (pictured left) was licensed as their new Associate Vicar at Hambledon Church on Sunday 15th September, and Anto Ficatier (pictured right) joined the team in August as Youth Minister.



Left : There was a reopening celebration at Busbridge Church on Sunday 8th September. Following the reordering the interior now provides flexible worship space with chair seating and a modern sound and tech system. Rector Simon Taylor (pictured far right) said, "It was a great celebration of God's faithfulness."



There were activities for all the young people during the service, plus an ice cream van and bouncy castles in the Old Rectory.

And a communal lunch was enjoyed following the service.





*Merry Christmas to you all and we hope this note finds you well and surrounded by the usual abundance of good mince pies and friends!*

It's now been over a year since we left Busbridge and Hambledon Church to move as a family to Bristol for us both to undertake our training at Bristol Theological College for Ordination. On 30th August our second child, Solomon David Silletti was born and he will be nearly 4 months old as we celebrate Christmas! Whether Christmas is a wonderful or a more difficult time for you, know that Jesus came to show you how much he loves you. We pray you know the blessings of God wherever you are and whatever you may be doing. We still hope to be popping back in to Busbridge, so as usual if you see a tall curly haired American guy and family please do say hi and we'd love to chat! With love in Jesus Christ and blessings of God Almighty to us all,

*Bryan, Tori, Abigail, & Solomon Silletti*



## *Busbridge Parish Register*

### WEDDINGS

*9th August 2019*

Louise Williams & Nicholas Clarke

*7th September 2019*

Loren Huckin & Fergus Esling

### BAPTISMS

*29th September 2019*

Mark Rouzel  
Emilia Holland

*13th October 2019*

(St Peter's, Hambledon)  
Arthur & William Mellors



## REMEMBRANCE SUNDAY

*Service at Busbridge Church  
All welcome*

**NOVEMBER 10TH**

10.00am

## Appliance Service and Sales

- Repair of most main makes
- Built-in and Freestanding
- New appliances with installation
- \* Built in and American F/F

**Checkatrade.com**  
Where reputation matters

**Cooker/Oven  
Dishwasher  
Washing Machine  
Tumble Dryer  
Fridge/Freezer \***

**Elstead (01252) 705198**

**www.applianceexpert.co.uk**

# That TRICKY recycling issue..

In our Christmas issue last year we highlighted some of the recycling issues that can arise from disposing of waste items after Christmas. This month we are returning to the topic with a more detailed look at a host of everyday recycling questions that you might be faced with. Information below is courtesy of the Waverley Borough Council website, whose recycling pages have a search function to help you (go to [www.waverley.gov.uk/site](http://www.waverley.gov.uk/site) and click on 'Bins and recycling'). The following relates to what we should and should not put in our blue recycling bins.

## Plastic bottle tops :

Yes these can be left on or put in the recycling bin separately.

## Sandwich packaging

**(plastic):** Sandwich packaging entirely made of plastic such as a plastic box/tray can be recycled. Rinse foodstuffs out before putting it in your recycling bin.

\*\*Cling film wrapping cannot be recycled.

**Dessert boxes :** Often cardboard with a large cellophane window. Yes but if the proportion of cellophane is particularly high, then you might consider removing it first.

## Trigger pumps on cleaning product bottles:

Yes, please rinse, put back on the bottle and put in your blue bin.



## Aluminium tubes :

(e.g. tomato puree) Yes, make sure the tube is empty, remove plastic cap, rinse and put both in the recycling container.



## Brown plastic trays e.g. for sausages or mushrooms :

Yes, these can be recycled.

**Biscuit and chocolate tubs and trays:** Yes, in blue bin.



**Brown paper bags:** Yes, if clean and non-greasy. You can recycle paper bags (and envelopes) with plastic/cellophane windows, but you can't recycle paper bags that are greasy or soiled with food residue. If the proportion of cellophane is particularly high, then you might consider removing this section.





**Ice cream tubs (cardboard):** No.

**Ice cream tubs (plastic):** Yes, after rinsing.



**Pizza box:** Empty, no residue – yes.

**Pizza box:** Takeaway/greasy - no put it in your black rubbish bin.



**Light bulbs** (old style, halogen, LED) – no  
**Light bulbs** energy saving (Compact Fluorescent Light (CFL) bulbs) – no - this item is hazardous and should not be put in your rubbish bin. You can take this item to your nearest community recycling centre to be recycled.

**Sandwich packaging:** Sandwich packaging made of card or paper cannot be recycled because it is usually soiled with food and/or grease: *paper and card soiled with food and/or grease cannot be recycled.*

**Cocoa/hot chocolate tins?** No due to the complex combination of materials (i.e. cardboard lined with a waxy layer of foil-like layer). Metal cylinders are recyclable though.

**Crisp tubes:** No; crisp tubes have a thin layer of foil inside which means they can't be recycled. The plastic lids can be recycled as long as they're not black. See P4



**Toothpaste tubes:** No, but see P4



**Plastic carrier bags:** No, but you can line your food waste collection caddy with unwanted plastic bags, but **not** compostable ones, as they interfere with the waste food processing machinery.

NB Large supermarkets (Sainsbury's or Waitrose in Godalming) have plastic bag recycling bins. Make sure to test your bag - if it's stretchable put it in the supermarket plastic bag recycling bin but if the bag snaps or springs when scrunched put it in your rubbish bin.



**Pump dispenser units eg liquid soap :** The top dispenser unit itself cannot be recycled, please put in your grey bin. The detached plastic bottle below can be recycled.



**Take away coffee cups:** No - paper cups have a thin layer of plastic film inside which means they can't be recycled, but plastic lids (but not black) can be recycled.







# St Hilary's

Preparatory School  
Godalming  
2—11 years

Now taking boys  
in Year 3 in a phased  
plan to be fully co-  
educational by Sept  
2022



*"Happy, charming and academically successful"* The Good Schools Guide



Tel: 01483 416551 • @StHilarysSchool

Email: registrar@sthilarysschool.com • www.sthilarysschool.com

**Ashley & Lewis**  
Heritage Paint Merchants of Godalming

**Colour Matching**  
Perfect Paint for Perfect Homes

www.ashleylewis-paint.com  
45 Farncombe St, Godalming GU7 3LH  
01483 351050  
sales@ashleylewis-paint.com

# A CHORISTER'S LIFE . . . .

*We catch up with local resident, James, to learn more about being a chorister at Guildford Cathedral.*

## **Why did you decide to become a chorister?**

I've always liked singing and always have a tune in my head. When I joined Lanesborough, the Guildford Cathedral School for the boys' choir, I was asked if I wanted to audition at the cathedral. They liked my voice and I thought it would be great to be a chorister.



## **How many hours of practice are there a week?**

Loads! We rehearse in the morning before school and before every service at the cathedral, so that can be up to 7 hours a week.

## **How often do you perform?**

We sing at Evensong on Tuesdays and Thursdays, then on Sundays we usually do either morning Eucharist and Matins straight afterwards, or Evensong. We alternate Sunday services with the girls' choir.

We sometimes do amazing concerts too, with full orchestra and professional soloist singers. I loved the Last Night of the Proms concert in September, which was the last hour of the 24-hour sponsored Organathon.

We recorded a CD of Easter music last year ('Christ Rising'), which was a great experience. We've sung Evensong live on BBC Radio 3 a couple of times. This year we went on a tour of the Netherlands for 8 days, singing in churches all over the country. I really enjoyed that.

*Our cassocks are an orangey-red colour, our surplices are white, and we wear a white scarf too.*

## **As well as singing, what do you enjoy most about being a chorister?**

Learning musical theory – I like making up tunes and also I think it's because I have a maths brain.

## **What's your favourite Christmas hymn?**

The choral version of 'I Saw Three Ships'.

## **And your favourite pop song?**

'Happy' by Pharrell Williams, and 'Get Out Of Your Lazy Bed' by Matt Bianco – on some Sunday mornings I find this hard!



## **FRIENDLY AND APPROACHABLE SOLICITORS IN GUILDFORD AND GODALMING FOR YOUR FAMILY AND YOUR BUSINESS**

Long established in Sussex, DMH Stallard's Surrey office is staffed by partners and teams who have long practiced in and around Guildford and Godalming.

**Wonersh House, The Guildway, Old Portsmouth Road, Artington, Guildford, Surrey GU3 1LR (parking available)**

**T 01483 302 345**

**[www.dmhstallard.com](http://www.dmhstallard.com)**



**Open Mornings**

Fri 15th Nov 2019

Fri 7th Feb 2020

**Reception Entry  
Informal Assessments**

Weds 6th Nov -

Thu 14th Nov 2019



## **St Catherine's Prep, Bramley**

CSA Day & Boarding School since 1885 | 4 - 18 years

Guildford GU5 0DF | [www.stcatherines.info](http://www.stcatherines.info)



# Seasons Greetings from all at Busbridge CE Junior School!



Another wonderfully busy autumn term reaches its zenith with celebrating Christmas.

Christmas at school is always special – plenty of opportunities to sparkle, shine, think of others and reflect on the true meaning of Christmas.

We hold our first Reindeer Run this December. As a fundraiser for Phyllis Tuckwell Hospice the children carry out a sponsored run festooned with flashing Rudolf noses and antlers. Truly magical! Their Christmas lunch will be expertly prepared by our cook Jenny and her crew (how do they produce 240 Christmas dinners in such a short space of time?!) Whilst munching, the staff plan to serenade the children with carols and Christmas songs – the dining hall may then seem to empty quite quickly: can't think why....!

No Christmas crackers with this year's Christmas lunch as we are doing our bit for the environment. Our Christmas term always finishes with our Wishing Service. This is a time when we get together, sing Christmas carols and think of others. Each year group prepares a Wish For The World which they read out to the rest of the school. That's the easy part – in 2020 we need to make the wishes come true.

What do you think of our artwork? Our children all designed Christmas cards as a PTA fundraiser. You can see some of our Y3 designs on this page.

All the very best for 2020!

*Richard Catchpole*  
(headteacher)





# Indestructible Hope



Last Christmas I got a bunch of new tools. Perhaps people were hinting my DIY skills were not up to scratch?

One tool was something a little similar to this 'indestructible' hammer.

It reminds me that Christmas is about many things.

One thing I'd like to invite you to consider is that it's about Indestructible Hope.

Losing hope can be such a dark place to be in.

We all need to have something to hope in, or for.

For me, Christmas personifies Hope and this is why we offer so many chances to step into the world of this amazing word. We'd love to get to know you over Christmas because this church family is your church family. It's our church together where we explore the idea that God's Hope is Indestructible.

It's why we now offer

four amazing child-friendly short carol and candlelight services on Christmas Eve,  
a variety of carol services and

two Christmas morning Celebrations.

Over 1,200 people attended one of these last year!

See you over Christmas, *Simon* (Rector, Busbridge Church)



---

## Christmas Eve

**Tuesday 24 December**

Candlelight Celebration for all the family  
at 3.30pm, 4.30pm, 5.30pm or 6.30pm (a choice of  
4 identical services)

11pm Midnight Communion

## Christmas Day

**Wednesday 25 December**

8.30am Communion with carols

10am Family Celebration

# SUNDAYS IN NOVEMBER DECEMBER & JANUARY

busbridgechurch 

## November



**10 November** | 10am Remembrance Sunday Service

Otherwise 8am Quiet, 10am (Classic in church / Contemporary in the school hall) and 6.30am services run as usual (please check website on [www.bhcgodalming.org/whats-on](http://www.bhcgodalming.org/whats-on))

## December (special Christmas services listed opposite...)

**1 December** | Advent Sunday | Services as usual at 8am, 10am (x 2) and 6.30pm

**8 December** | Morning services as usual at 8am and 10am | 6.30pm Unplugged Christmas Special!

**15 December**

8am Quiet Service (communion) | **10am Family Carol Service** | **5pm Carol Singing from Busbridge Church to Holloway Hill Sports Pavilion** (no 6.30pm service).

**22 December**

8am Quiet Service (communion) | 10am Benefice Combined at Hambledon Church (no services in Busbridge) | **6.30pm Evening Carol Service**

**29 December**

10am Benefice service | 6.30pm Churches Together Service



## January

**5 January** | 10am Combined All Age Service | 6.30pm Evening Service (no 8am Quiet)

Services return to normal on Sunday 12 January (please check website on [www.bhcgodalming.org/whats-on](http://www.bhcgodalming.org/whats-on))



# Cranleigh Tiles & Bathrooms

246 High Street, Cranleigh, GU6 8RL



Whatever the budget, from non-branded basics and essentials to more sophisticated designer products, our family-run bathroom showroom lead by Craig Cooper is here to help. We offer free, no obligation estimates and advice on everything bathroom related.

Bathroom Essentials • Showers • Toilets & Washbasins • Baths  
Wet Rooms • Lighting • Tiles & Flooring  
Design & Installation Available

Showroom open  
9am to 5pm Monday to Saturday

Telephone 01483 272727  
[craig@cranleighbathroomstudios.co.uk](mailto:craig@cranleighbathroomstudios.co.uk)  
[www.cranleigh-bathroomstudios.co.uk](http://www.cranleigh-bathroomstudios.co.uk)



Cut some local conifer, holly or laurel and combine with fir cones and garden twine for a rustic look.

*If you are keen to reduce waste this Christmas how about trying out some creative alternatives to gift wrapping?*

Wrapping paper is usually sold as a single use item, often comes in a cellophane wrapper, and due to foil embossing or pieces of sticky tape it is tricky for councils to sort and recycle. Being eco doesn't have to mean using sack-cloth. Hopefully these images and ideas will inspire you to use what you already have around you, or look locally for some interesting and creative alternatives.

*Ruth Roseblade*



Make the wrapping itself part of the gift by using a t-towel or seasonal scarf.



If you have young ones around then decorate your own paper using potato stamps.



If family members still love the sound of ripping paper then look out for old maps or sheet music in charity shops.

Don't use paper at all! Instead hide your gift inside another container: a glass jar, a clay pot, a boot, a basket, a biscuit tin.



# JOYEUX NOËL

*A Busbridge resident recalls a traditional French Christmas .....*



Christmas in France is synonymous with succulent food and family reunions. I am sure my mum is already, in October, planning the various Christmas meals she has to organise. Traditionally the most important meal is on Christmas Eve, starting with an aperitif and many “amuse-bouche” at about 8pm.

Then comes the food marathon: a meal of at least 6 courses, paired, of course, with the appropriate fine wines. The staple dishes are foie gras followed by sea food, especially oysters, then fish – most likely sea bass.



In some regions you sample some “boudin blanc” - white meat sausage flavoured with truffle and white wine.

Eventually the main course is reached: capon, turkey or beef, followed by cheese. By then one is totally sated and welcomes the break that Midnight Mass affords! This is still so popular in France and probably the only mass that unites all the generations: everyone finds something comforting in this joyous celebration. When growing up in the French Pyrenees, I was lucky enough on numerous occasions to step out of church onto a blanket of fresh snow.

Time to go back to the food – yes, more food! The British might solve everything with a cup of tea, but in France it is the food. Desert is the only course left, we might be glad to know. Traditionally this is “La buche”, the log, shaped like a log and filled with various flavours of cream or ice cream – utterly delicious and quite light in comparison to the rest of the feast.



Then on goes the music and we dance through the night – a good way to burn off some calories? Bedtime may be 2 or 3 a.m. – and then, if you have young children, you have to be up at the crack of dawn to unwrap presents from Santa (***IF*** we have been good all year!)

Christmas Day – should we call it Groundhog Day? – because there is another 6 or 7 course meal to get through! Unfortunately we don’t celebrate Boxing Day, so it’s back to work - suffice to say, not feeling very fresh!!



While Basia recalls a traditional Polish Christmas .....

# WESOŁYCH ŚWIĄT



Christmas in Poland traditionally starts on the morning of 24<sup>th</sup> December when the Christmas tree is brought indoors and decorated by all the family.

During the previous week, square communion wafers, imprinted with a Nativity scene, are bought, enough for everyone who will attend the Christmas Eve meal – the main celebration of Christmas. Before the meal, each person breaks off a small piece of their wafer and exchanges it with a similar piece broken off another person's wafer until everyone has a piece of everyone else's wafer. The pieces are then consumed – a very corporate Communion!



Then comes the big meal, traditionally of 12 courses to represent the 12 apostles, consisting of different types of fish and vegetables but no meat: Advent is not over till Christmas Day – the meat comes tomorrow. The last course – if anyone still has room (!) – is a sweet delicacy.

After the meal the children are sent out to look at the night sky, and at the first sight of a star, they rush back indoors to find their presents – which have been snuck in by the adults! After this everyone attends Midnight Mass: no-one gets to bed early on Christmas Eve. On Christmas Day there is an English-style turkey dinner.



Courtesy Wikipedia, by Przykuta

Another tradition in Eastern Europe is to set one spare place in case a stranger calls needing a meal.

We heard a story of one case where a man tested this out – much to the surprise of the family, but they welcomed him in and fed him.

*Unforgettable*



## St Catherine's, Bramley

GSA Day & Boarding School since 1885 | 4 - 18 years  
Guildford GU5 0DF | [www.stcatherines.info](http://www.stcatherines.info)

# Clock Barn Studio

Movement and wellbeing  
[www.clockbarnstudio.com](http://www.clockbarnstudio.com)



### Pilates Classes

Mondays 9.30 - mixed abilities  
Mondays 18.15 - beginners  
Mondays 19.30 - improvers  
Tuesdays 19.00 - mixed abilities  
Thursdays 9.30 - mixed abilities  
Thursdays 18.00 - mixed abilities  
Thursdays 19.15 - for men  
Fridays 9.30 - mixed abilities  
Fridays 10.15 - Gold (over 60's)

New Pilates Classes at Clock Barn Studio  
Clock Barn Farm  
Hambleton Road  
Godalming GU8 4AY

To book please visit the website  
[www.clockbarnstudio.com](http://www.clockbarnstudio.com)



# Rotary Charity

## CYCLATHON

**On Sunday 24th November 2019 the Rotary Clubs in Godalming will hold a Charity Cyclathon at Snap Fitness in Godalming High Street.**

Now in its third year, the event aims to raise funds for Phyllis Tuckwell Hospice Care, the Kent, Surrey & Sussex Air Ambulance, and other Rotary charities. The event is also open to other local charities to enable them to raise money for themselves. We are looking for teams of 1 to 5 riders from local people, families, businesses, sports clubs, schools and other organisations to make a fun event for everyone. There will be refreshments, a commemorative medal for all participants and prizes for a range of team categories.

For more details see:

<http://cyclathon-rotarygodalming.co.uk>

*Entrants with a heart condition, high blood pressure or any condition requiring the avoidance of strenuous activity should take medical advice before participating in this event.*

For any further info please contact:

**Michael O'Sullivan Email:**  
**mosullivan03@gmail.com**  
**or Tel: 07768 950801**



**Saturday 9th November 6.30pm**

*Another chance to listen to the **Portuguese** countertenors and **Fado Duo**.*

**Saturday 30th November 6.30pm**

***Ensemble Renard Wind Quintet** performing works by Hindemith, Debussy, Danzi and Barber.*

**Saturday 11th January 2020**

*All day **BAROQUE DAY** featuring The London Conservatoires String Ensemble, soloists & singers.*

These are FREE concerts with a retiring collection.

*Concerts will be held at **Godalming Baptist Church, GU7 1BA**. For more details and reservations please visit our website, [www.conservatoireconcerts.org.uk](http://www.conservatoireconcerts.org.uk)*





## Sunrise: A Great Place to Call Home

Living in a residential care community like Sunrise, it's literally home-from-home. Every resident is encouraged to bring in their own furniture, and their pets. High quality care and support is provided in an environment where residents can make new friends and enjoy a variety of events.

Our programme of activities each day offers a full social life, from musical entertainment to a pub quiz, tea dance to art and crafts, games to flower arranging.

Join in as much or as little as you like – our desire is that residents live a happy life that suits them.

---

Call us on  
**01483 604099**  
to book a tour.

---

**Sunrise of Guildford**  
Astolat Way, Peasmarsh,  
Guildford, Surrey GU3 1NE  
**SunriseGuildford.co.uk**





# THE CELLAR CAFE

## Christmas Appeal 2019



*The Cellar is a café in the centre of Godalming which as a charity, welcomes and supports vulnerable people.*

For many years the Christmas Appeal has enabled a large number of Christmas parcels to be distributed to individuals and families. These have been made up of various items according to people's particular needs and age. The parcels brighten the lives of those of our customers who need emotional and practical support at this time of year. Along with the social activities we have planned, we would love to help these people enjoy some of the more special things that we often take for granted.

**Waitrose or Sainsbury's gift vouchers, cash, and also toys or festive gifts and seasonal foods are all gratefully received.**

The financial climate we have all been experiencing through recent years has meant that we have continued to welcome new customers in need of comfort. This trend is not going to suddenly disappear in the coming months and we would love to be able to extend our gifts as far as possible. These special Christmas parcels of seasonal food and gifts are extra to the food parcels that we distribute throughout the year.

We truly value your ongoing support and would be grateful for whatever you feel you can spare. Please, bring or send donations of any of the above gifts by Friday December 13th to: The Cellar Café, Crown Court, Godalming, GU7 1DY Tel: 01483 417097 *Thank you*

## Christmas Day LUNCH INVITATION

**Each year, Churches Together in Godalming & District organises a lunch in Godalming Baptist Church on Christmas Day for those who would otherwise be on their own.**



Transport is organised and the guests are served a traditional Christmas lunch, followed by entertainment & a visit from Father Christmas. We are very grateful to be receiving a donation from Waitrose towards the lunch, which is free & run by volunteers.

If you know of anyone who would otherwise be alone on Christmas Day and would like an invitation, please contact Gwen Wheatman at [gwenwheatman@hotmail.co.uk](mailto:gwenwheatman@hotmail.co.uk)

For those without email please call: **01483 497842**

*If you are considering volunteering, please contact Gillian Martin ([martin2ls@btinternet.com](mailto:martin2ls@btinternet.com)) to ask for a form. We need people to help to set up before, and on Christmas Day itself. We would particularly appreciate offers of transport. Sarah Higgins Chair of Committee ([sarah.higgins@crsblaw.com](mailto:sarah.higgins@crsblaw.com)).*



## LONGACRE SCHOOL

INDEPENDENT PREPARATORY SCHOOL FOR  
BOYS AND GIRLS AGE 2½-11 YEARS

*Longacre has  
the perfect mix*

### OPEN MORNING

14th November

9.30-12.00

Daily minibus service from  
Guildford and Godalming

To attend please telephone 01483 893225  
or email [admissions@longacreschool.co.uk](mailto:admissions@longacreschool.co.uk)  
Hullbrook Lane, Shamley Green, Surrey GU5 0NQ  
[www.longacreschool.co.uk](http://www.longacreschool.co.uk)

Bursaries available  
(up to 100%)

Registration now open  
for Sept 2021

[longacreschool](https://www.facebook.com/longacreschool)   
[@longacreschool](https://www.instagram.com/longacreschool) 



## Helping Hands

Care and Nursing at Home

Est. 1989



Award-Winning Team  
Fully Managed Service  
Family Owned and Run  
Dementia Specialists  
56 Branches Nationwide

### Do you need a helping hand?

With nearly 30 years of experience in caring for people within their own home, and a commitment to using only directly employed carers, we have the expertise to provide the best care possible from 30 minutes to full-time live-in care.

Looking for care?  
**01483 667 196**

For more information  
[www.helpinghands.co.uk](http://www.helpinghands.co.uk)



Baby

# CHRISTMAS

## CAKES



Kids always love the look of snow capped Christmas cakes, but the booze-fuelled flavours and heavy dried fruit content means they can't actually eat them. This alcohol-free recipe makes a perfect alternative that everyone can Hoover up on a lazy winter afternoon.

They make perfect presents for non-baking friends and family who hanker after the quintessential taste of Christmas. Makes 12.

## INGREDIENTS

- 80g butter
- 375g mixed fruit (use a pre-mixed supermarket bag)
- 75g cranberries
- 150g soft brown sugar
- 1/2 tsp mixed spice
- 1/2 tsp ground cinnamon
- 1/2 tsp ground ginger
- 1/2 tsp bicarbonate of soda
- 240ml water
- 2 eggs, beaten
- 80g plain flour
- 80g self raising flour
- 3-4 tbsp apricot jam
- Half a pack of marzipan
- Half a pack of white fondant icing
- Icing sugar for rolling
- Red and green food colouring

Sam's book *The Tin and Traybake Cookbook* is available now in bookshops.


**1** Preheat the oven to 180°C/fan 160°C/ gas 6 and generously grease the muffin tin.


**2** Place the butter, mixed fruit, sugar, spice, cinnamon, ginger, bicarbonate of soda and water in a saucepan and bring to the boil, stirring all the time. Remove from the heat and allow to cool. Pour into a mixing bowl and stir in the beaten egg. Sift in the flours and mix until completely combined.

**3** Dollop equal amounts of the cake mixture into the muffin holes and bake for 25-30 minutes until a cake tester comes out clean. Allow to cool before turning out.

**4** Warm the jam and paint a thin layer over each cake. Roll out the marzipan and cut out circles big enough to cover the cakes, setting aside any offcuts. Lay the marzipan gently over the cakes, smoothing any creases.

**5** Roll out the fondant and cover each cake with a large circle of icing, setting aside the leftovers as before. Dye the leftover marzipan and icing, and use it to make holly leaves and berries to decorate the cakes. Keep in an airtight container and eat within a week.

 [samgatesfood](https://www.instagram.com/samgatesfood)

 [@samgatesfood](https://twitter.com/samgatesfood)

 [www.samgatesfood.co.uk](http://www.samgatesfood.co.uk)



**Fully Insured**

**Fully Qualified**

**Corrective  
Surgery**

**Reducing**

**Pruning**

**Thinning**



**Felling**

**Dismantling**

**Hedge  
Trimming**

**Stump Grinding**

**Julian Draper NCH Arb**

**Tel 01428 681978 Mob 07968 827711**

**forkingbranches@hotmail.com**



**MJ NOYES**

**ELECTRICAL CONTRACTORS**

**For domestic & commercial electrical  
installation work**

**Martin Noyes**

**2B Charterhouse Road**

**Godalming**

**Surrey GU7 2AG**

**1:01483 427340 M: 07836 234282**

**E: [info@mjnoyes.co.uk](mailto:info@mjnoyes.co.uk)**

**[www.mjnoyes.co.uk](http://www.mjnoyes.co.uk)**

## *A Blast FROM OUR Parish Past*

### CHILDREN'S CHRISTMAS TOYS.

The little children at the Munstead House Nursery have little prospect of receiving any toys this Christmas other than those that their fellow parishioners in Busbridge may be moved to give them. They are children for whom no toys are likely to come from such homes or relatives as they may have. It would be sad to think of a toyless christmas for this group of children in our midst. May we ask Busbridge folk to remember these children in our parish. It is hoped that it may be possible to arrange a Christmas Tree and Party for them on Dec. 23. Any toys will be gladly received by the Matron at Munstead House—or they may be left at the Rectory, if possible not later than Dec. 22.

DECEMBER 1948



# Godalming MUSEUM



## *Darwin and Huxley's Dilemma*

A talk entitled Darwin and Huxley's Dilemma will be given by geologist, Dr George Bennett, at the Octagon at Godalming Parish Church at 7.30pm for 8pm on Wednesday 20th November.

Tickets £5 from the Museum

## *Cards for Good Causes*



The best selection of charity Christmas cards in town and a wide range of gifts will be available again at Godalming Museum until Saturday 21st December.

The sale of Cards for Good Causes benefits 34 charities – including Chase, GUTs and the Phyllis Tuckwell Hospice. For every pound spent, at least 70p goes to the charity.

In the permanent museum shop, there is a variety of quality gifts and books, many related to Surrey.

Godalming Museum is located at 109a High Street, by the Pepperpot. It is open Tuesday to Saturday, 10am to 4pm in Wintertime. Admission is free but donations are welcomed. The Local Studies library is open in the afternoons from 1pm to 4pm. Light refreshments are available throughout the day. Children are always welcome. For further information please contact the Museum on 01483 426510 or visit the website at [www.godalmingmuseum.org.uk](http://www.godalmingmuseum.org.uk)

## **Busbridge Infant School PTA 2019** **Nordmann Christmas Trees for sale**

Due to popular demand, Busbridge Infant School PTA is again selling top quality Nordmann Fir Christmas trees (non-drop) to the school and local community. The trees are great quality, good value for money and you are supporting the Infant School by helping raise much needed funds!

*"I have bought trees in the past so I know that they are good"*

*"So pleased that Busbridge Infants is doing trees again, we have been buying for a few years and they have been FAB!"*



Prices and Sizes:

<b>3ft to 4ft</b>	<b>£30</b>
<b>4ft to 5ft</b>	<b>£38</b>
<b>5ft to 6ft</b>	<b>£45</b>
<b>6ft to 7ft</b>	<b>£53</b>
<b>7ft to 8ft</b>	<b>£65</b>



**The trees will be available to collect from the school's Hambledon Road car park on Saturday 7<sup>th</sup> December between 2-4pm.**

Payment must be submitted in full by cash, cheque or BACs with an order form by 25<sup>th</sup> November.

**For more information or an order form please contact**  
**[BusbridgeInfantTrees@gmail.com](mailto:BusbridgeInfantTrees@gmail.com) or Rachel Roberts on 07595 421937**

# WHAT'S ON



## BUSBRIDGE EVENING WOMEN'S INSTITUTE

Meet on the 2nd  
Tuesday of each month at Busbridge  
Village Hall, GU7 1XA at 8pm

**Visitors warmly welcome**

Contact: Gill Loveluck 01252 266822

**Tuesday 12th November**

**Annual Meeting** at which our WI  
adviser Chris Butterfield will tell us about  
interesting new ideas for WIs.

**Tuesday 10th December**

**Eliza McClelland - "A Christmas  
Garland."**

Eliza will entertain us with seasonal stories  
and songs.

## Pilates in Milford

Mondays: 12:45-1:45pm and 2:00-3:00pm

Location: BURTON PAVILION



- Pilates to strengthen the core stability muscles
- Improves posture, balance & co-ordination
- Relieves tension and stress
- Tones muscles and prevents injury
- Complements other exercise & relaxes
- Pre- & postnatal conditioning

*A great way to get in shape. Easy to learn.*

To register call 07767 811074  
Or email [hels@swotty.co.uk](mailto:hels@swotty.co.uk)

Helen Roberts, Chartered Physiotherapist  
MCSP, DipAPhysio HPC, APPI



# Carol Singing

*From Busbridge Church to Holloway Hill Sports Pavilion*

**Sunday 15 December**

Departs Busbridge Church: 5pm | Arrive 6.30pm at the clubhouse (approx.)

**Bar open for the final sing at 6.30pm** | All residents and friends welcome!

For exact times, route, and other details see [bhcgodalming.org](http://bhcgodalming.org)

***'Tis the season to be jolly, Fa la la la la, la la la lah!***



# Godalming Choral Society

## *An English Christmas*

### Rutter : Gloria

Willcocks : Ceremony of Psalms  
Vaughan Williams : Fantasia on Christmas Carols  
Saturday 14<sup>th</sup> December 2019, 7.30pm

St John's Church, Farncombe, GU7 3EJ Conductor : Sam Hayes  
Tickets £16 (Under 25s Free) are available from Record Corner, Pound Lane, Godalming;  
Godalming Choral Society Ticket Office Tel : 0794 150 6172 or on-line.

For more details go to [www.godalmingchoral.org.uk](http://www.godalmingchoral.org.uk)

*Afternoon  
Carol Service*

IN ASSOCIATION WITH  
**Prime Time**  
& featuring the Busbridge  
Junior School Choir

*All warmly welcome*

MONDAY 16TH DECEMBER  
2.30PM IN BUSBRIDGE CHURCH

*You are warmly invited to this year's Fairtrade event*

## Fairtrade Sale

**Friday 15th & Saturday 16th November**  
**11am to 4pm**  
3 Braemar Close, Godalming

There will be sale of fairly traded items. Christmas cards and related charities. Option of a simple soup lunch in aid of Christian Aid.



# ALLFORD

PROPERTY MAINTENANCE

I specialise in the design, fabrication and installation of bespoke fitted and free standing furniture. I am also able to offer high quality property maintenance work including carpentry and joinery, and interior decorating. For more information including photos and testimonials see my website [www.allford.co.uk](http://www.allford.co.uk)

Whatever the job - from fitting a kitchen to hanging a picture - I aim to work to the highest standards to ensure that all my customers are completely satisfied.

For a free estimate or advice, contact Steve Allford on **07723717897**, or email [info@allford.co.uk](mailto:info@allford.co.uk)

*Striving for excellence*

## TUSCAN VILLA

Available for holiday lets

*Between San Gimignano  
and Volterra*

Recently restored Separate Barn  
Sleeps 3/4

Beautiful large secluded villa  
In gardens of one hectare  
Sleeps 8/10

4 large double bedrooms

2 large sitting rooms

Study, dining room, utility  
kitchen/diner

4 bath/shower rooms

15 x 6m infinity pool

Tennis court

[www.ilcolto.co.uk](http://www.ilcolto.co.uk)

**Tel: 01483 808105** or  
[theresalove440@yahoo.co.uk](mailto:theresalove440@yahoo.co.uk)



- Live in Care
- Respite Care
- Palliative Care
- Specialised Care

[info@carteblanchecare.co.uk](mailto:info@carteblanchecare.co.uk)  
[www.cart Blanchecare.co.uk](http://www.cart Blanchecare.co.uk)



Call us on

**07467  
606418**



**KAREN REGAN DIPFHP MCFHP MAFHP**  
MOBILE FOOT HEALTH PROFESSIONAL  
[WWW.HEARTANDSOLE.SITE](http://WWW.HEARTANDSOLE.SITE)

07776309567

**Paul Clifford**  
Property Services  
Qualified "Part P" Electrician  
B-Tec Trained Plumber  
Plumbing Electrical  
Kitchens Bathrooms  
Any job from a refit to a washer or fuse  
Fully Insured References Available

[Paulclifford60@gmail.com](mailto:Paulclifford60@gmail.com) 07889 073853



Get ready for Christmas early at a craft workshop Jill Johnston has organised on **Thursday 7th November** for us to create some

special **Christmas crackers!** You'll need to bring your own little gifts to personalise the crackers for your family! If you haven't booked already, please contact Jill to see if there are any spaces on this fun evening: [jill.johnston60@btinternet.com](mailto:jill.johnston60@btinternet.com) or 422194. There will be a charge of £6.00 to cover the cost of materials. (We'll waive the visitor fee for this event!) We look forward to seeing you at 8.00pm in Busbridge Old Rectory and we'll have a drink and nibbles before we begin making our crackers.



**Tickets are now available** for our **Charity Quiz Night on Saturday 7th**



**December!** This will be held in Busbridge Village Hall at 7.30pm, with our brilliant Quizmaster team: Alan Betts and Dudley Hilton. Tickets are £12, the same as last year, and include a lovely quiche supper and delicious desserts. There'll be a raffle in support of our **2019 charity: Hydon Hill Cheshire Home**. This year, we'll only have 9 tables of 8, and tickets will be sold on a first come first served basis, so make sure you contact Janet as soon as possible on

[janetmharvey@btinternet.com](mailto:janetmharvey@btinternet.com) or 423264. There's no need to make up a table, as Janet will ensure people are put with others they know, so come in ones, twos, threes or eights! All are welcome to what is always a great evening!

To celebrate the New Year, on **Thursday 9th January**, we are delighted that **Lisa Olsworth-Peter**, our Music and Worship Pastor, is coming to talk to us on her life 'from the West End to Busbridge'. There may also be one or two songs! We look forward to seeing you at 8.00pm in the Old Rectory, with drinks and nibbles at the beginning. All are welcome, including men!

*Membership remains at £18 for the year, with a fee of £5.00 per evening for non-members. Cheques made payable to Nexus, please. Thank you. For more info, please phone Janet Harvey on 423264 or Kate Kaye on 415296 or find us on [www.bhcgodalming.org/groups](http://www.bhcgodalming.org/groups)*



### Coffee, Cake and Hearing Aid Repair?!

Do you have an NHS hearing aid? Would you find it convenient to have the routine maintenance of your hearing aid undertaken in your local area? If so, then The Old Rectory, Busbridge, **2-4pm**, the afternoon of the **2nd Friday** of every month is the place to be!

**Friday 8<sup>th</sup> November, Friday 13<sup>th</sup> December, Friday 10<sup>th</sup> January**

So whether your hearing aid is in need of re-tubing or you require new batteries, come along to one of the new drop-in sessions. No appointment is necessary, just come along with your hearing aid(s) and your beige record book.

# Computer Repairs



- ✓ Desktop & Laptop Repairs
- ✓ Wireless & Wired Networking
- ✓ PC Upgrades & Tune Ups
- ✓ Virus & Spyware Removal
- ✓ Data Backup & Recovery
- ✓ Server Support



ONSITE REPAIR OR COLLECTION  
PROFESSIONAL AND RELIABLE SERVICE  
RESIDENTIAL & BUSINESS CUSTOMERS ARE WELCOME



WE ALSO BUY OR REPAIR YOUR  
BROKEN IPADS &  
MACBOOK LAPTOPS



REASONABLE PRICES AND FAST TURNAROUND

☎ 07809 401721 ☎ 01483 419468

🌐 [www.TechGuy.biz](http://www.TechGuy.biz) @ [michael@TechGuy.biz](mailto:michael@TechGuy.biz)

## Pilates classes



### All levels

- beginners to advanced,
- recovery from back problems or sports injuries,
- mixed classes for men & women

**Monday 9.35am**  
**Tuesday 7pm**  
**Thursday 9.35am**

£10 a class (or £55 for block of 6)  
£40 Private classes in your home  
(happy to teach 2 of you )  
£55 Private studio lessons

Beautiful studio in Godalming countryside  
Clock Barn Farm Hall, Busbridge,  
GU8 4AY

**Tel: 07796295549 Ally**

[www.rhw.co.uk](http://www.rhw.co.uk)

**rhw** Family Law Specialists

solicitors

call: 01483 302000

email: [guildford@rhw.co.uk](mailto:guildford@rhw.co.uk)



Wills &  
Inheritance  
Quality



Family  
Law



Conveyancing  
Quality

**Other legal services: Wills & Probate,  
Conveyancing, Employment Law,  
Commercial Property & Corporate**

## QUARRY HILL STORES

17 Quarry Hill



**Paper Boys and Girls Required in Busbridge**  
**Newspaper Delivery Service in Busbridge**  
**Contact: Mr S. Patel**

**Tel: 01483 416938**

## RELAX & HEAL REFLEXOLOGY

[samsegar@btinternet.com](mailto:samsegar@btinternet.com)  
[www.relaxandhealreflexology.co.uk](http://www.relaxandhealreflexology.co.uk)

*An effective & deeply relaxing,  
non-invasive treatment which  
can support the body's  
natural healing processes.  
Treatments in your own home.*



**07773 807816**



### **Thursday 14th November**

*2.00pm—4.00pm @ Busbridge Church*  
**Vera Lynn themed Vintage Tea Party**

This will be a wonderful trip down memory lane, with the opportunity to sing along, Vera Lynn style, to songs from the war time era. The afternoon will be led by our very own Music & Worship Pastor, Lisa Olsworth-Peter, whilst you will be able to enjoy some tea & cake served by our PrimeTime team.

### **Saturday 30th November**

**The Marvellous Movie Matinee .....**

*2.30pm @ Busbridge Church*

The incredible untold story of Katherine G Johnson, Dorothy Vaughan and Mary Jackson - brilliant African-American women working at NASA, who served as the brains behind one of the greatest operations in history: the launch of astronaut John Glenn into orbit. Tea, coffee & biscuits provided. No charge for this event.



### **Thursday 5th December**

**'Tea & Talk' given by Frances Shaw** *2.30pm - 4pm @ Busbridge Church*

This afternoon we will explore together some traditional art that often appears on Christmas cards. If you have a favourite card available, please do bring it along.

### **Monday 16th December**

**Afternoon Carol Service**

*2.30pm Busbridge Church*

All are warmly welcome to this afternoon Carol Service in association with PrimeTime and featuring the Busbridge Junior School Choir.

### **Thursday 16th January**

**'Tea & Talk' by the Humanimal Trust** *2.00pm @ Busbridge Church*

For more details or to book please contact **01483 421267** or email **primetime@bhcgodalming.org**

**S Bennett & Son**  
**Gardening Services**

*Local reliable service for all  
your gardening needs*

**Tel - Stuart: 07759 361 000**

*sbennettandsongs@virginmedia.com*

**All warmly welcome.**

We are happy to arrange lifts to any of our events.





**Donline**  
COMPUTER  
CONSULTANCY



*Donline offers professional  
computer engineering services to:  
Small Business, Home Office, &  
Home Users.*

*Whether you have one computer or fifty,  
Donline can assist with all of your  
IT requirements: Supply & installation of  
hardware and software, upgrades,  
networking, printing, repairs including  
system and data recovery, anti-malware,  
firewalls, technical support and training.*



Call: Don Tocher, on  
07870-643486 or 02392-177506

**Microsoft**  
CERTIFIED  
Systems Engineer

Or contact Donline, online:  
Web: [www.donline.co.uk](http://www.donline.co.uk)  
Email: [don@donline.co.uk](mailto:don@donline.co.uk)

# RB Carpentry & Joinery



Cabinetry,  
Carpentry &  
Joinery

Kitchen Fitting  
General Property  
Maintenance

40 years  
experience

References  
available

Busbridge based

Contact :  
**Rob Beasley**  
0797 7944162

## Fed up with Ironing? Let the **Ironing Fairy** do it for you!



### You are not alone!

Ironing is the most dreaded household chore.  
We regularly heard people wishing for a "ironing fairy"  
to take it off their hands, which is why we started our  
business.

### Why choose us?

- ✓ Free collection & delivery
- ✓ Turnaround in 48 hours
- ✓ Professional service

### We can work around you

Whether you require a regular weekly or 'on demand'  
ironing service.

01483 428044 07809 401794

[www.ironingfairy.net](http://www.ironingfairy.net)



## R. & R. Roofing

Guildford

Roofing Contractor & General Builder



- NEW ROOFS & REPAIRS
- CHIMNEY POINTING & REBUILD
  - SLATING
  - TILING
- HIGH PERFORMANCE TORCH-ON FELTS
  - FLAT ROOFS
  - LEAD WORK
- GUTTERING
- uPVC FASCIAS & SOFFITS
- EXTERIOR MAINTENANCE

FREE ESTIMATES EMERGENCY SERVICE

01932 344660

07956 554604

7 Rivermead Byfleet KT14 7BZ

Email: [russ@rr-roofing.co.uk](mailto:russ@rr-roofing.co.uk)



## J. Morris

Established for over 50 years.

### LOGS THAT BURN. KINDLING THAT LIGHTS.

Hardwood logs for  
open fires and log burners.  
Collection & delivery 7 days a week.

### COMPOSTS MULCHES GARDEN SUPPLIES

Load sizes from 1m<sup>3</sup> to 7.5t.

Delivery 7 days a week.

[www.logsthatburn.co.uk](http://www.logsthatburn.co.uk)

07587 343 572 / 01483 423193

[logsthatburn@gmail.com](mailto:logsthatburn@gmail.com)

Compton Nursery, The Street,  
Compton, Guildford, Surrey GU3 1EJ

## Honey Landscapes

*Garden Maintenance and Construction*



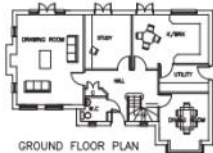
Patios & Drives • Hedges  
Stonework & Brickwork  
Fencing • Planting  
Lawns large or small  
Tree works • Turfing & Seeding

Tel: 07952915547

[honeylandscapes@gmail.com](mailto:honeylandscapes@gmail.com)



FRONT ELEVATION



GROUND FLOOR PLAN

### PLANNING & DESIGN SERVICE

Architectural drawings for  
Extensions, Alterations & New Build

Free No Obligation Quotations

Tel: 01483 417555

Mob: 07818 014357

[www.architecturesurrey.co.uk](http://www.architecturesurrey.co.uk)  
[simonplanning.design@btinternet.com](mailto:simonplanning.design@btinternet.com)

## A J Bennewith & Co

CHARTERED ACCOUNTANTS

We are an independent practice  
that has been offering a personal  
service for over 30 years

Contact us for all your  
accounting needs, tax needs  
and a free initial consultation

Registered Auditors  
Personal Tax Returns  
Companies & Charities

Tel: 01483 539 777

[www.bennewith.co.uk](http://www.bennewith.co.uk)



## SMALL ADS

**VERY LOCAL TOP QUALITY TWO YEAR OLD HARDWOOD LOGS FOR SALE.** Felled & processed just a mile from centre of Busbridge. Pick-up load (1.2cm) £90, Dumpybag (0.8cm) £70 delivered to your drive. [andrew4logs@hotmail.co.uk](mailto:andrew4logs@hotmail.co.uk) or call Andrew on: **01483 424934** or **07952 429071**

**GARDENER TRAINED WITH THE RHS, HARD WORKING AND RELIABLE.** Will undertake weeding, pruning, mulching and bed work plus more from £20 per hour and medium hedge cutting service priced per job. Contact Matthew on **01483 421547**

**MATHS TUTOR.** Experienced tutor and teacher now has sessions available. All levels up to GCSE, including preparation for Senior School entrance exams. Non-Verbal and Verbal Reasoning and Study Skills also offered. Please call Linda on **07891 708202** or [linda.mlja@sky.com](mailto:linda.mlja@sky.com)

**TUTOR IN ENGLISH LANGUAGE OR LITERATURE** - Busbridge based tutor - 20 years in education, degree in English and a CertEd. Sessions tailored specifically to the needs of your child. Up to and including GCSE. Please call Sue on **07554 660026** or [Busbridge.Tutor@gmail.com](mailto:Busbridge.Tutor@gmail.com).

**Downsizing or Decluttering?** Fed up with having a chaotic kitchen, wardrobe, cupboard, garage, study or more and feeling overwhelmed? Life Laundry is here to bring calm, order and joy back into your home. Contact Karen on **07775 736559** or [lifelaunderyme@gmail.com](mailto:lifelaunderyme@gmail.com)

**CHRISTMAS WREATH ORDERS.** Beautiful mixed foliage, biodegradable Christmas wreaths available for home delivery to all GU7 and GU8 postcodes from our local business. Please visit our website at [www.theflowerhub.co.uk/wreaths](http://www.theflowerhub.co.uk/wreaths) to see our previous designs and to place your order.

**LOOKING FOR A CHILDMINDER IN GODALMING?** Fully qualified, Ofsted registered, close to Godalming town centre. Please contact Laura for further details on **07581 058164** or email [summerfieldchildminding@gmail.com](mailto:summerfieldchildminding@gmail.com)

*Professional, confidential & sympathetic counselling*

**Gill Brennan**

MBACP (Accred), FdA (Hons), BA (Hons)

07947 424 538

[gillhbrennan@gmail.com](mailto:gillhbrennan@gmail.com)

[www.godalmingcounsellor.com](http://www.godalmingcounsellor.com)



**Vanessa Edwards Hypnotherapy**  
Cognitive Hypnotherapist  
DipCHyp HPD NLPprac

[www.vanessaedwardshypnotherapy.co.uk](http://www.vanessaedwardshypnotherapy.co.uk)  
[info@vanessaedwardshypnotherapy.co.uk](mailto:info@vanessaedwardshypnotherapy.co.uk)  
07523101952

I specialise in helping women with anxiety, stress, confidence issues and weight loss. I also work with phobias, OCD, bad habits, smoking, depression and insomnia.

If your issue is not listed here please contact me.

We ask you to please make sure that those people who are the focus in photos have given their consent to be included in our publication & on our website; in the case of minors we ask that this is parental consent. "The Bridge" would like to thank advertisers for their support, but to make clear to readers that it does not offer any endorsement of the goods or services advertised. Views expressed in the articles are not necessarily those of the Editor or Busbridge Church. The Editorial Team reserve the right to edit any articles submitted for consideration for publication.

## Advertising

**SMALL ADS** are designed to advertise local services.  
£5 per insert, 40 words maximum.  
For Sale items £2,  
20 words maximum.

Please contact Jacky at:  
**[jackybeale@hotmail.com](mailto:jackybeale@hotmail.com)**

**DISPLAY ADVERTISING** is for businesses who wish to advertise in full, half, quarter or eighth page format. We deliver free of charge to over 1850 local homes. Please contact Cathy at:  
**[editor.atthebridge@gmail.com](mailto:editor.atthebridge@gmail.com)**

We reserve the right to decline advertising or payment for advertising at our discretion.

### COPY DATE

JAN/FEB 2020 EDITION

**FRI 13TH DECEMBER**

PUBLICATION DATE: MONDAY 6TH JAN

## EDITORIAL TEAM

Cathy Brook (Editor)	420633
Jacky Beale (Small Ads)	423768
Christine Payne	417320
Chris Sollars	Lorna Sherwin
Lesley Reeves (Treasurer) via email at:	<a href="mailto:bridgefunds@btinternet.com">bridgefunds@btinternet.com</a>

Write to us:  
c/o Church Office, The Old Rectory, Old Rectory Gardens, Godalming GU7 1XB.

St John the Baptist Church  
Rector: Rev Simon Taylor  
01483 421267



## PC Doctor Godalming

Fixing computers of all shapes and sizes

If your computer is run down, unreliable and generally out of sorts then why not call for professional help and advice in your own home. All types of computer or network problems dealt with on a "No Fix No Fee" basis.



79 Pullman Lane, Godalming, GU7 1YB  
Tel: 01483 424378 | 07876476990  
email to: [mike.lagan@pcdocgo.co.uk](mailto:mike.lagan@pcdocgo.co.uk)



## Tuesley Tax & Accounts

- Self employed & small business bookkeeping, accounts & tax
- Individual self assessment tax returns

Call Lesley on 0752 1535 079  
[tuesleytax@btinternet.com](mailto:tuesleytax@btinternet.com)

# Ashby Private Hire & Taxi Service

Long or Short Distances

◆ Airports ◆ Hospitals ◆ School Runs

*Surrey County Council Approved Operator*



**01483 860700**

**Mobile 0780 2432648**

4 Windy Wood  
Bargate Wood  
Godalming GU7 1XX

**aphcars@hotmail.co.uk**



## calico

*Open 7 days*

13, High Street, Godalming  
Curtains - Blinds - Fitting Service

*Patsy, Louise & Sammy  
would like to thank our  
customers for their  
support during this year.*

Together we are keeping  
our High Street alive!



Last date to order  
curtains & blinds for  
Christmas  
Monday 2<sup>nd</sup> December

Last fitting date  
Monday 23<sup>rd</sup> December



01483 421990  
calico-curtains@hotmail.com

