

The **Bridge**

MARCH & APRIL 2021



Spanning the
COMMUNITY
in Busbridge

www.bhcgodalming.org/thebridge

PRIOR'S FIELD

GODALMING SURREY



GSA Girls' Boarding and Day School 11-18

*Achievement in all its forms
is alive and kicking in every
part of their school day.*

- Tatler Schools Guide 2021



PRIOR'S FIELD - THE PLACE TO ACHIEVE!

Please contact our Admissions department for more information
or to book your place at our next Open Event

admissions@priorsfieldschool.com

01483 810551 www.priorsfieldschool.com

#believe #achieve #succeed

Registered Charity No. 312038



CONTENTS

PAGES 5, 10 & 11 *Winterwatch*

Looking back through the winter & the beauty and unusual wonders of the season.

PAGE 12 & 13 *The Joy of Gardening*

A look forward to a rewarding and enjoyable season of gardening ahead.

PAGE 15 *Rector Simon Writes*

Simon shares his Easter message.



PAGES 16 & 17 *Palm Sunday Story*

One for the younger members of our community, as told through a YouTube video.

PAGES 32 & 33 *Local Covid Help*

Our thoughts and prayers are with all those in the local community during this pandemic. We hope that you will find articles of interest and support contained herein. With the ever changing situation of Covid-19 please allow for circumstances that may have changed since publication.



FRONT COVER : Minster Road blossom by kind courtesy of Chris Payne

Appliance Service and Sales

- Repair of most main makes
- Built-in and Freestanding
- New appliances with installation
- * Built in and American F/F

Checkatrade.com
Where reputation matters

**Cooker/Oven
Dishwasher
Washing Machine
Tumble Dryer
Fridge/Freezer ***

Elstead (01252) 705198

www.applianceexpert.co.uk



LOCAL NEWS

Godalming College student Blair Fiander (left) has been helping other students during the pandemic with their revision and home learning. Blair makes use of modern technology such as the social media platforms TikTok, YouTube, Instagram and a Discord Server Channel. In the November lockdown she started broadcasting live on TikTok, showing how she was revising and organising her studies as a way of motivating herself. It was immediately popular with her peers all over the country.

BRAINIAC BLAIR Making Studying Fun

Within a week she was on the Jeremy Vine show, talking live on TV with Anne Diamond. She now has more than 267K followers, has been signed up by London talent agent Curtis Brown, and has several projects in the pipeline including a documentary.



No-one is more surprised than Blair but it has grown so much that she now has ninety co-Brainiacs who are all A grade students either studying A level or at university (some from Godalming College) and they are offering online study via the Blairs Brainiacs Discord Server for anyone from pre GCSE to university. The concept is that no-one has to study alone and that everyone can have company and motivation from others in the group. Little did Blair know back in November that we would all be in a third National Lockdown in January and learning would again become remote. Blair and her dedicated Brainiac support has never been more needed even though they are not sure what exams if any they will be taking this summer.

Assistant Principal, Carol Horlock said, "What Blair has accomplished is absolutely phenomenal, I can totally understand why Blair's Brainiacs has been so successful: We all need other people! Studying alone can sometimes be tough but having others share how they organise their learning, how they cope with the demands of study and pick themselves up when things aren't very straightforward can be a real inspiration. Blair has tapped into the true nature of young people's desire to succeed and learn. We are delighted that she has captured the imagination of so many students all over the world at a time when it was very much needed."



Snow Time!

Brighton Road : A thick blanket of snow covered local roads on Sunday 24th January.



Below : Fun in the St Edmund's School playground.



Above : Daffodils defying the cold at Winkworth Arboretum.

Right : We loved this snowy chap at Winkworth!



Right : St Hilary's School enjoyed the Monday in the snow



Vaccination BOOST



A great community effort led by Busbridge resident, Andrew Turner, Managing Director of AMT Marketing, helped support the local Covid vaccine roll out in January, with individuals, firms and organisations freely giving up their time and resources.

Andrew said, "It was a pleasure to help the NHS set up a vaccination centre in Guildford at G live. We particularly want to thank David Gray for the use of one of his vehicles for the day and Busbridge Church who helped with the purchase of the partitions for the site; it really was a community effort. Most of all I would like to thank Rhian Warner; I have seen what you and your team have achieved in the last few days, it is an inspiration to all of us. The future is looking very bright at last!"

Painting SUCCESS

Viewers tuning in to Sky's 'Landscape Artist of the Year' programme, on Freeview channel 11 (SkyArts) on Wednesday 27th January, might have recognised a familiar face!! Local artist and Head of Art at Prior's Field School, Steve Kinder, won the 'Wild Card Artist' of that edition; chosen from among 50 other artists that were painting alongside, en plein air, at West Reservoir, London.

Reader's may remember that Steve also recently kindly curated and displayed some of his work at the 'Comfort & Joy Exhibition' held at Busbridge Church in December.

See more of Stephen's work at stephenkinderart.com





Emery &
Orchard

ESTATE AGENTS

Passionate about property

SINCE 1993



EMERY & ORCHARD

Godalming's Local Independent Agent Established for over 25 years.

Property to sell in Godalming or the Villages?

Then contact Tony Emery
or Jeremy Orchard on
01483 419 300
to arrange a
Free Market
Valuation.

20 High Street
Godalming
GU7 1EB

www.emery-orchard.co.uk



Fully Insured

Fully Qualified

**Corrective
Surgery**

Reducing

Pruning

Thinning



Felling

Dismantling

**Hedge
Trimming**

Stump Grinding

Julian Draper NCH Arb

Tel 01428 681978 Mob 07968 827711

forkingbranches@hotmail.com

OPEN EVENTS 2021

Friday 12th March

Tuesday 27th April

Wednesday 16th June

admissions@stcatherines.info



St Catherine's, Bramley

GSA Day & Boarding School since 1885 | 4 - 18 years

Guildford GU5 0DF | www.stcatherines.info

admissions@stcatherines.info



Mrs Brown!



This is what we call our garden's female blackbird! Mrs Brown is actually a leucitic blackbird, one that has a few white feathers in her plumage, which she is showing off well in the photo. She was in the bird bath for ages this February morning, shooing off all the sparrows who tried to join her!

CP



Busbridge Parish Register

FUNERALS

14th January 2021
(at Eashing Cemetery Chapel)
Alexander John Henry Winder

20th January 2021
(at Guildford Crematorium)
Maureen Mary Rodway



Farewell to DAVE

Busbridge and Hambledon Church were sad to say goodbye to the lovely Preece family on 21st February.

Busbridge's Curate, Dave, is heading off to his new appointment as Priest in Charge of the benefice of Saxmundham with Kelsale cum Carlton in Suffolk.

Dave writes, "As we move on my wife and I would like to thank you for journeying with us over the last three and half years. We have loved walking alongside our church family and those in the wider community too and will miss you all!"



BUSBRIDGE EVENING WI

Our monthly meetings are now being held online on Zoom on the 2nd Tuesday of each month. Contact: Ann Heward 01483 420360

Tuesday 9th March
Belinda Know-Spinks
Ten Famous Trees in Surrey

Tuesday 13th April
Lucy Allen
From Titanic to Cruella
The Highs and Lows of a Stunt Woman's Life



ICY WONDERS



Local temperatures plummeted early last month, with night time lows of -7 to -8 degrees Celsius on 12th February. For those out braving the elements on their daily exercise this led to some unusual spectacles!



Right :
Pipkrakes or
hair ice at
Winkworth
Arboretum on
12th February.

When water freezes, it expands by about 9% of its volume, so where a porous rock or soil or rotten wood is full of water which starts to freeze, the ice expands out of the containing matrix in the shape of the pores in the matrix. The result is known as pipkrakes or hair ice. Pipkrakes can also be called needle ice, especially if they are very fine and straight. (I believe pipkrakes is an Inuit word. I learnt about these from my Geography Professor, Cuchlaine King who did research in Baffin Island.)

Above : 12th February — A local feathered entry for 'Dancing on Ice' - geese skating on surface ice covering Rowe's Flashe Lake at Winkworth Arboretum.

Below : 13th February — A cascade of icicles extraordinaire spotted in Hascombe!
And how was it formed?



Well, no need to explain more





Hoar FROST

And on 10th January local residents awoke to a beautiful hoar frost; its intricate crystalline structure coating vegetation and buildings.

When the air temperature is reduced, often by the earth's surface losing heat under clear skies at night ("radiation cooling"), the "dew point" may be reached. This the temperature at which condensation occurs and depends on how humid the air is; cold air can hold much less water vapour than warm air. Frost may occur when dew freezes if the temperature subsequently drops below zero degrees C.

But sometimes the dew point is below freezing, so water vapour turns to ice without becoming liquid first ("sublimation"). This is known as hoar frost. Condensation and sublimation require "freezing nuclei" to occur, usually microscopic particles of dust in the air. Once sublimation starts, ice crystals themselves form freezing

nuclei. This is the mechanism in which snowflakes grow or by which hoar frost forms on a leaf or twig or spider's web (top picture, Hambledon Road). Glaze frost is when water drops fall onto a frozen surface and freeze, e.g. "black" ice on roads or when fog comes into contact with surfaces that are below zero.

And I have just learned from the Cloud Appreciation Society (yes, it does exist and I'm member no. 52,211!) that bacteria may also form freezing nuclei in clouds and on the ground. It's called bioprecipitation!

Thanks to Chris Payne for sharing her meteorological knowledge with us.



An update on Busbridge resident Andrew Mackenzie's fund raising efforts for Harefield Hospital (who carried out his lung transplant 6 years ago).

Readers may recall he was hoping to achieve £2000 for them by selling his handmade wooden reindeer and snowmen as in previous years at Christmas fairs. Then Covid appeared making it somewhat more of a challenge, needing this year to find new avenues and online platforms to sell his wares. Through the generosity of many the end result was a staggering and heart warming £9099.78!

Andrew & Sandra would like to warmly thank all those who so generously supported them—and say they'll be back next year!



THE *Joy* of Gardening



Those of us lucky enough to have an outdoor space during the first Covid lockdown were able to refine or rediscover the joy of gardening. Enthusiastic amateurs, my husband and I love growing vegetables and flowers which we can share with others.

There have been triumphs and disasters, but we have learnt the secret of having a colourful and productive garden is to plan ahead and make sure that the right plant goes in the right place. Your soil, garden aspect, and of course the weather, will all affect your success. When planning the garden, a sun loving plant will not like a shady place, nor will an alkaline soil loving plant enjoy being planted in acid soil.



Take a notebook and camera with you on a walk and record what works well in established gardens around you.

Choose vegetable seeds now for the garden.

- It is not too late to sow broad beans; 'The Sutton' is a later variety.
- French and runner beans should be sown in late April as they will not survive frost.
- Beetroot, carrots, winter cabbage and spinach can be sown straight into the ground when the soil is warmer.



In this area we have free draining, neutral to acid soil, which is perfect for growing soft fruit such as raspberries, red and blackcurrants. We grow blueberries in pots as they need an ericaceous soil, regular watering and sun. 'Bluecrop' is a good variety whose leaves turn orange making them ideal pots to slot into the autumn flower borders. Thornless blackberry plants are prolific croppers bearing large, sweet fruit. Easy to grow, they produce fruit on last year's long stems which can be tied in to a fence or frame.



The flower garden brings so much pleasure, not only to us but to friends and family who can share the colourful blooms.

My favourite shrub at this time of the year is *Chaenomeles speciosa* 'Nivalas', the white flowering Japanese quince, which flowers non-stop from December to May outside my dining room, lighting up the shady corner. It will thrive in all soils and aspects.

Now is the time to look at catalogues. If you want cut flowers all summer dahlias and sweet peas will keep on giving. Whether you choose annual or perennial plants, plant vegetables or fruit, the garden can give so much pleasure and encourage wildlife too.

There is much joy to be had from gardening!

The happy Busbridge gardeners!

RZI GARDEN MAINTENANCE LTD

Local, friendly gardener offering:

- GRASS CUTTING
- GARDEN RUBBISH CLEARANCE
- PAVING SLAB CLEANING ...and very reasonable rates!
- HEDGE TRIMMING
- WOODEN FENCING & SHED REPAIRS

Call Barry on: **07760 689434**
or email: **barry.stone50@yahoo.co.uk**

Professional, confidential & sympathetic counselling

Gill Brennan

MBACP (Accred), FdA (Hons), BA (Hons)
07947 424 538
gillhbrennan@gmail.com
www.godalmingcounsellor.com



Cranleigh Tiles & Bathrooms

246 High Street, Cranleigh, GU6 8RL



Whatever the budget, from non-branded basics and essentials to more sophisticated designer products, our family-run bathroom showroom led by Craig Cooper is here to help.

We offer free, no obligation estimates and advice on everything bathroom related.

Bathroom Essentials • Showers • Toilets & Washbasins • Baths
Wet Rooms • Lighting • Tiles & Flooring
Design & Installation Available

Showroom open by appointment
10am to 4pm Tuesday to Friday

All enquiries warmly welcomed but in order to promote safe shopping please can we ask you to book an appointment prior to your visit.

Telephone 01483 272727 or 07539 145513
craig@cranleighbathroomstudios.co.uk
www.cranleighbathroomstudios.co.uk



My marking of time has a new memory. We're used to marking time. We do this with birthdays, anniversaries, Facebook memory settings and so much more.

This time last year I came down with an illness that hit me so powerfully that I labelled it 'the beast'. It briefly gave me insights into my own mortality and just how precious, fleeting and fragile the beauty of a God-given life is.

Long Awaited Ending

*Simon Taylor,
Rector*

*This Easter,
please join us
on Palm
Sunday by
collecting a
Palm Cross
from the box
in the church
porch in the
days
beforehand.*

I can pinpoint the moment I knew the darkness meant all was not well but here I am, one year on and able to look back. I am waiting, like all of us, for the ending. It may be a long awaited ending of mixed emotions of restlessness; waiting in hope and longing; but also waiting in loss and pain. Some of us will be waiting with memories of loss of family, friends, loved ones, time or energy. For some the end will be gradual and there will be ongoing smaller endings of learning to cope in new ways or steps into recovery. Some will already be in endings of changed lives or livelihoods and uncertain futures.

In my waiting I have watched far more TV than ever before. One film was 'The Never Ending Story' (1984, remade in the 1990's). It's the story of a dark force called The Nothing which seeks to engulf the world. Something in the theme resonated for me and this is why we've taken 'Long Awaited Ending' as our church theme for Easter.

We're waiting for the end to restrictions, distance relationships and the end of this phase of the amazing vaccine effort, but as a Christian I know that there is another ending. It is the ending longed for in Scripture across generations and it is the defeat of the darkness of evil. The ending which arrives at Easter is the resurrection of Jesus and by placing my trust in Him I know that my mortality is only fleeting because eternity beckons.

This Easter, please join us on Palm Sunday by collecting a Palm Cross from the box in the church porch in the days beforehand. You don't need to be particularly religious to take one. I'm inviting you to put it in a window or on a gate post in our lovely neighbourhood as a sign of the end coming and hope returning. It's an invitation to help all who see it be assured that the end has come and is coming. There is hope for tomorrow and in it I invite you to remember that yours is a precious God-given life. Easter means the waiting is over and we have a new life to live which takes us to the end of time (Daniel 12:4).

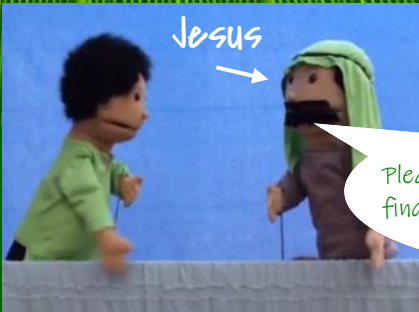


The Palm Sunday story

During the pandemic, the Children, Youth and Families team at Busbridge & Hambledon Church have produced lots of videos for the children to enjoy online with their parents on YouTube. Here's just an excerpt from one example for the younger children



Search 'BHC Godalming'



I'd love to tell you a story all about Jesus on a trip into Jerusalemare you ready?

Please fetch a donkey for me, you'll find him tied up in that village.

What are you doing with my donkey?



Okay then.



So a little while later, Jesus, on the back of his donkey, rode into the city of Jerusalem



Thank you for putting your coat on donkey's back. That does look comfy.

Look at all the coats and palm branches that are for you to walk on!



The crowds waved palm branches and shouted 'Hooray for Jesus.'



Hosanna!

Wow, look at all the people, they're so happy to see Jesus.

Everyone was so pleased to see Jesus. He came riding on a donkey because He was the King of Peace.

THE END

Juliet Gilbert is Busbridge and Hambledon Church's Children's (ages 0-4) and Families Worker.

To learn more about what's on offer for pre-school age children please get in touch with Juliet.



See: <https://www.bhcgodalming.org/youth-children>

Contact Juliet on:

01483 421267 or juliet.gilbert@bhcgodalming.org



SALCET at Work in EL SALVADOR



SALCET (The Salvadorian Children's Earthquake Trust) was established by local GP Chris Jagger and other friends in 2005. Through medical and humanitarian assistance it aims to relieve poverty, sickness, and distress and to preserve the good health of children and their relatives who are suffering as a result of earthquakes or any other natural disaster in El Salvador and other vulnerable countries.

The worldwide Covid 19 pandemic has hit us all hard, but for those in countries like El Salvador where so many are already in extreme poverty it has been devastating. Despite restrictions on travel, SALCET has been able to keep in close contact with its friends and projects there and support them prayerfully and financially through their 'lockdown' experiences.



Along with all the Central American/Caribbean region El Salvador has experienced its worst hurricane season on record. After Storm Amanda caused such havoc there, SALCET was able to provide financial support, which was used for emergency food parcels (bottom left) and repair work (below) to homes in the communities we work with (San Carlos and Panchimalco).

The situation was exacerbated because of 'lockdown', as people could not

leave their homes to work or buy food, so the provisions they received were absolutely vital. The Community House in San Carlos (financed by SALCET) became an emergency shelter once again and has been a place of refuge & safety throughout the last 6 months.



The rainy season was relentless last year culminating in hurricanes Ita and Iota in November, but we heard in late November that the dry season has started now and the sun is shining.

The country was in total lockdown for 80 days (the longest of any Central American country) and at the time of writing has reported over 56000 cases of Covid 19. There have been 1,719 deaths to date, and the effects on the economy have been catastrophic.



SALCET



Our Salvadorian field worker, Ruth Cruz, continues to inform us of people needing ophthalmological treatment, and as hospitals and clinics begin to function again SALCET is financing cataract surgery, prescription spectacles etc for those in need.

From the above it is clear that there is still plenty of work for SALCET to do as a charity and we are grateful for the continued support of many people in Busbridge and elsewhere. If you would like to support this work, please contact Chris and Maggie Jagger via the Church Office (01483 421267)



St Hilary's
Preparatory School & Nursery, Godalming

Boys & Girls
Ages 2—11



Independent Prep School of the Year 2020



Bursaries & Scholarships available for Year 3 Entry

Virtual Open Mornings Taking place every Friday at 11am

www.sthilarysschool.com • Tel: 01483 416551 • Email: registrar@sthilarysschool.com



@StHilarysSchool

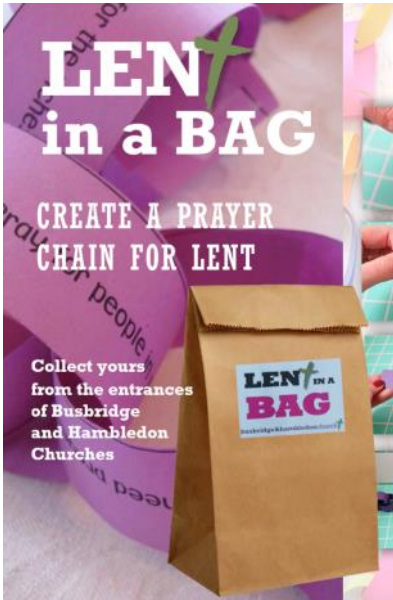


@sthilarysschool



St Hilarys School Trust

Things to do in March & April



Sign up for a daily text with suggestions to support your well being, local community and the environment!



Starting on Easter Saturday, and running during the Easter holidays, a trail around Busbridge to find clues to find the treasure chest of eggs. Then you need to crack the code to collect your egg. Join the Zoom launch on Easter Saturday at 10AM for instructions and the first clue. Maps will be given to pupils at BJS and BIS at the end of term too! Use the QR for more info.





ONLINE EASTER SERVICES

At the time of writing, all church services are online, broadcast live and available on demand on the BHC Godalming YouTube channel. Children and Youth work is continuing on Zoom.

14 March—Mothering Sunday

9AM Classic & Heritage (BCP) Services
10.15AM FUSE all age service, with posy making

28 March—Palm Sunday

9AM Classic Service
10AM Messy Church (Zoom)
6PM Unplugged Youth Service

Good Friday—2 April

10AM Good Friday Service

Easter Saturday—April

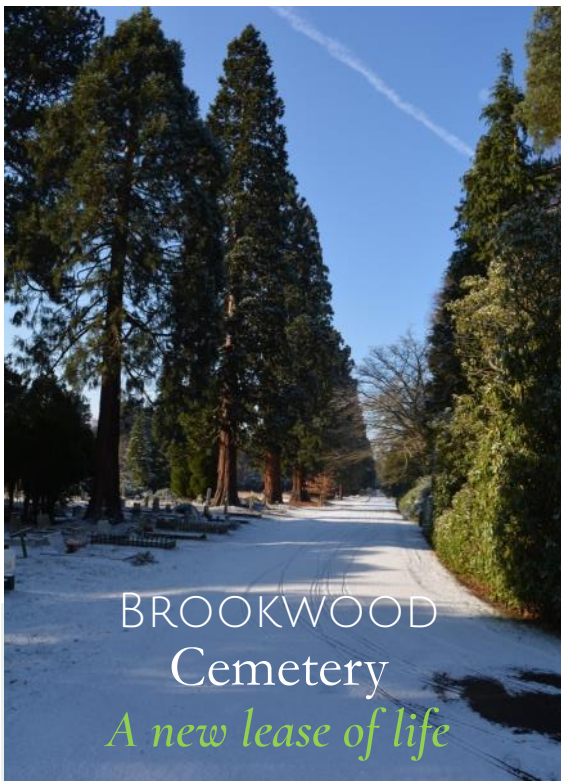
10AM Launch of the Great Busbridge Easter Egg Hunt (Zoom)



EASTER DAY

10.15AM Easter Day Service with children's activities
See www.bhcgodalming.org/lent-easter-21

All links and info on www.bhcgodalming.org



Ian Tomes, one of our readers who works for Woking Borough Council, tells a fascinating story about Brookwood Cemetery, which is undergoing a major refurbishment programme under his direction.

Brookwood Cemetery, located just a few miles from Godalming, was created in the mid-19th century to ease the burden of finding burial

space for the increasing population of London. Local churchyards were already full and in some cases over-used, and with any substantial available acreage being needed for housing, and growing concerns about public health, the situation was becoming dire.

A scheme proposed by Sir Richard Broun and a Mr Richard Sprye was for a cemetery to be situated far enough from the City to allow it still to expand, but with railway access to allow easy access for burials and subsequent visits by family and friends. With a railway link already in existence a large pocket of land at Brookwood was identified, and it became the solution to the problem, with an Act of Parliament passed with Royal Assent on 30th June 1852.

Work began after this plot of some 2200 acres of common land, referred to as the 'Waste of Woking', was purchased from Lord Onslow. An excerpt from an 1899 London Necropolis brochure describes approximately 400 acres of 'beautifully wooded land with large expanses of heather and rhododendrons laid out with the utmost regard to order and perfection; trees, flowers, winding paths, all diversified the view, avoiding the monotony of ordinary burial-places,



and relatives felt content knowing their loved ones were in a quiet spot and that here indeed was a veritable God's Acre', and this sentiment very much applies today.

At its peak there were some 3,000 burials per year, the highest number being 4,578 in 1864 (88 per week!)



Chapels for all denominations were built. Parishes, Churches and other organisations could reserve areas solely for their use, and each person regardless of class was entitled to their own individual grave. A

terminus for the "London Necropolis and Mausoleum Company" was built at Waterloo, from which trains carrying coffins in their own purpose built carriages and mourners (in first, second or third class carriages) left for the journey to Brookwood. The Cemetery opened on 13th November 1854. It was fully self-sufficient, having its own stonemasons yard (now the home of Beard Construction), glass houses for growing flowers and a "Superintendents Lodge", where two full time vicars were housed. The railway service ceased after the terminus was bombed in 1942 but parts of the facade still exist at Waterloo if you know where to look. Perhaps one of the most interesting statistics is that although there are some 250,000 buried at cemetery there are only 25,000 memorials. The difference is accounted for by large numbers of pauper burials, and London churches emptying their crypts when the cemetery opened.

To be continued ...

LONGACRE SCHOOL
VIRTUAL OPEN DAYS

Individual virtual tours available by appointment. To register please visit our website or contact admissions@longacreschool.co.uk or tel. 01483 893225.
Hullbrook Lane, Shamley Green, Guildford, Surrey GU5 0NQ
www.longacreschool.co.uk

Bursaries available for Sept 2021 Early applications advised.



Our retirement village is home to people who really value their peace of mind... people who moved safely during lockdown, to enjoy a closer kind of community, with more reassurance for them and their family.

In line with government guidance you can still make the move during lockdown.

Visit safely. Complete swiftly. Move securely.

Buy or rent an Inspired property, get in touch today! Call **01428 788 250** or visit **bramshottplace.co.uk**

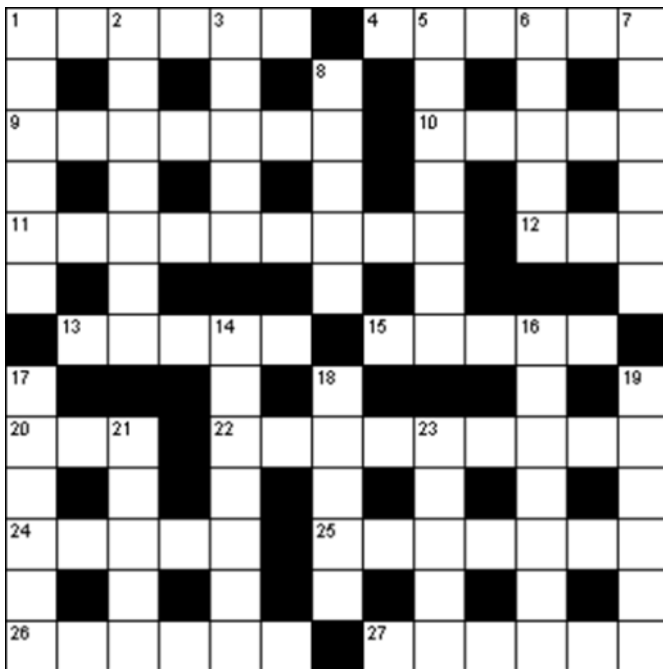
**BRAMSHOTT
— PLACE —**
Inspired in Hampshire

Cryptic CROSSWORD

ACROSS

- 1** Death holds first real absence (6)
- 4** Great one sabotages allocation of aid (6)
- 9** Divine charge protecting sources of metal (7)
- 10** Bush's presidential opponent gained a point (5)
- 11** Gabriel's bridge sits over topless mountains by lake (9)
- 12** Overturn pan to find rest (3)
- 13** Small sweets held in place (5)
- 15** Cooks chips? (5)
- 20** Concealed in monosyllabic dog... (3)
- 22** Urban baby calls for attention (4,5)
- 24** One who lectures or who gives a gift? (5)
- 25** Bond formed when music and wine come together (7)
- 26** Globe shows spelling error in this place (6)
- 27** Snakes or ladders (no introduction needed!) (6)

Kind thanks to Suzie Lambert for writing our crossword. Answers can be found on page 27.



DOWN

- 1** Subdue feathered cuckoo without her (6)
- 2** Mixed up endless tropical fruit (7)
- 3** Last accident with Elon's first car (5)
- 5** Typical little bird within breed (7)
- 6** Re-write 12 Across or protect yourself with this (5)
- 7** Discharged previous sloppy temp (6)
- 8** Audible refusal heard on the farm (5)
- 14** Rickety terrace conceals dinner lady (7)
- 16** Lyric poem contained half of this section (7)
- 17** Knives gingerly disabled when lacking ID (6)
- 18** Wipe away tears afterwards, disguised as happy or sleepy perhaps (5)
- 19** Records early women's traditions (6)
- 21** Man on church pew (5)
- 23** Hold passport for child with bow and arrow (5)



Russell's Hedges & Tree Care

**Tree felling • Reductions • Pruning • Crown Lifting
Thinning • Hedges • Stump Grinding**

Fully Qualified & Insured

Russell Beddard

Tel: 01483 208161 Mob: 07722 506720

Email: rsgservices@outlook.com

Open Mornings

Thursday 11th March 2021

Wednesday 28th April 2021

Friday 11th June 2021

prepadmissions@stcatherines.info



St Catherine's Prep, Bramley

GSA Day & Boarding School since 1885 | 4 - 18 years

Guildford GU5 0DF | www.stcatherines.info



Prime Time is open to anyone (over 50s, retired and/or semi retired) and **warmly welcomes new members**. During the pandemic the team continue offering opportunities to engage through the use of varied means; online through Zoom and YouTube, telephone contact and post.

New for Prime Time - **regular drop-in and chat sessions**. Commencing on Thursday 25th February, join members of the Prime Time Team in the BHC Public Zoom Room for a chance to chat and catch up with the Team as well as your Prime Time friends. The Zoom Room will be open between **3.30 and 4pm every Thursday until Easter**. Bring along a cup of tea and piece of cake in order to really recreate the authentic Prime Time experience! We look forward to welcoming you to this new venture.



Tuesday 23rd March at 2.30pm - The Prime Time Quiz - back by popular demand, (and inevitably having to be on Zoom again). Prime Time Team member Di Drudge will once again be our quiz master for afternoon, putting our little grey cells to the test in the way that only Di can, (usually with quite hilarious results!) Join us for an afternoon of fun; yes, it is a quiz - but we are careful never to take it too seriously and there will be plenty of laughter and chat along the way.

For further details and Zoom joining instructions, please email primetime@bhcgodalming.org or leave a message for the Prime Time Team via the Church Office on: 01483 421267

Answers to crossword on page 25.

ACROSS

- 1 Dearth
- 4 Triage
- 9 Foresee
- 10 Gorse
- 11 Archangel
- 12 Nap
- 13 Stuck
- 15 Fries
- 20 Lab
- 22 Town Crier
- 24 Donor
- 25 Rapport
- 26 Sphere
- 27 Adders

DOWN

- 1 Defeat
- 2 Apricot
- 3 Tesla
- 5 Regular
- 6 Apron
- 7 Exempt
- 8 Neigh
- 14 Caterer
- 16 Episode
- 17 Blades
- 18 Dwarf
- 19 Writes
- 21 Bench
- 23 Cupid

www.samaritans.org

You can call them free on 116 123 or email them at jo@samaritans.org

Whoever you are and whatever you're facing, they won't judge you or tell you what to do. They're here to listen so you don't have to face it alone.

When life is difficult, Samaritans are here – day or night, 365 days a year



Sunrise: A Great Place to Call Home

Living in a residential care community like Sunrise, it's literally home-from-home. Every resident is encouraged to bring in their own furniture, and their pets. High quality care and support is provided in an environment where residents can make new friends and enjoy a variety of events.

Our programme of activities each day offers a full social life, from musical entertainment to a pub quiz, tea dance to art and crafts, games to flower arranging.

Join in as much or as little as you like - our desire is that residents live a happy life that suits them.

Call us on
01483 604099
to book a tour.

Sunrise of Guildford
Astolat Way, Peasmarsh,
Guildford, Surrey GU3 1NE

SunriseGuildford.co.uk



GUILDFORD

WILD GARLIC & Courgette *Fritters*



You either love or hate courgette fritters. Cooked carelessly, they're like eating a bath sponge, but on form they are utterly delicious. Choose your veg wisely and stick to baby courgettes, with firm, bright green skins and barely formed seeds. Wild garlic brings a gorgeous sweet flavour and it's only around for a short season, so make the most of it! Feeds 4-6.

INGREDIENTS

500g courgettes
1 tsp salt
200ml plain Greek yoghurt
Handful of wild garlic leaves
finely chopped
Salt and pepper
40g butter
60g finely chopped onions
2 cloves garlic, crushed
2 tbsp chopped fresh chopped
coriander
zest of a lemon
3 eggs, beaten
100g crumbled feta cheese
50g plain flour
salt and black pepper
Olive oil for frying

1 Grate the courgettes and toss with the salt, before placing in a colander to sweat out the excess liquid, turning every now and then for fifteen minutes.

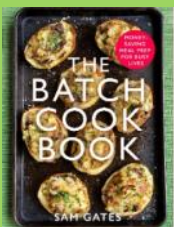
2 Make the sauce by mixing the yoghurt and mint, then season with salt and black pepper.

3 Melt the butter and fry the onion and garlic until soft and set aside to cool.


4 Mix the coriander, lemon zest, eggs, feta and flour together, season very well, then stir in the onion and garlic.


5 Squeeze the courgettes to remove excess water, then add to the mixture.

6 Heat one tablespoon of oil in a frying pan and check it's hot by dropping a little bread in. If it sizzles, it's ready. Cook the fritters by dropping tablespoons of mixture spaced apart into the frying pan. Flatten each dollop lightly with a spoon and cook for 2-3 minutes on each side until golden brown. Drain them on kitchen roll. Serve with the yoghurt and mint sauce and eat quickly to avoid the old sponge problem.



Sam's new book
*The Batch
Cookbook* was
published on
15th October.

 [samgatesfood](https://www.instagram.com/samgatesfood)

 [@samgatesfood](https://twitter.com/samgatesfood)

 www.samgatesfood.co.uk



HAWKINS BROS.
FINE ENGLISH WINES

WWW.HAWKINSBROS.CO.UK

The English Wine Specialists

Delicious, award-winning,
still & sparkling wines
Chosen from over 40
English vineyards
Friendly, expert advice
FREE, same day, local delivery
Tasting evenings



The Courtyard, Secrett's Farm Shop, Milford, GU8 5HU
07973 321516

Ladda Thai Cuisine



Welcome to Ladda Thai Cuisine.
Hope you are familiar with
Ladda's smile at the Food Festivals
around many towns in Waverley.
Now, we have permanently settled
in Godalming
at The Charterhouse Arms Pub.
Our Takeaway services are
COLLECTION & DELIVERY.

@LaddaThai
@LaddaThaiCuisine

Lorem Ipsum

Opening Time

Wed - Fri 17:30 - 21:00

Sat & Sun 12:30 - 21:00



Collection



Delivery

Call 07368411685

The Charterhouse Arms Deaneury Road, Godalming GU7 2PQ



CALL 0203 198 4231

HandymanVIP

Is a Trading name of Guy Building Services Limited

WHATEVER YOU NEED,
ONE CALL DOES IT ALL

CONTACT US FOR A FREE QUOTE

With over 20 years of
experience, you will be
able to benefit from a
dedicated
one stop solution
to all your
**Maintenance and
Renovation** projects.
We offer a very high
level of service
focusing on delivering
high quality finishes to
an agreed budget and
time frame.

Reliable, punctual and
courteous.



Odd Jobs



Home Improvement
Projects



Rental Property
Maintenance

www.handymanvip.com

help@handymanvip.com



At our **February** meeting, Richard Ashworth gave an informative talk about the **Godalming and Villages Community Store**. The past year has been extremely hard for a lot of people, from many walks of life. Richard invited us to visit The Wilfrid Noyce Centre to see for ourselves what is, to all intents and purposes, a small supermarket without a checkout! The Store itself is staffed by volunteers; if you feel you'd like to be part of that team, please get in touch. He thanked everyone for their generosity in supporting this venture.



This talk had to be postponed from January! So, on **Thursday 4th March**, we were delighted that **Ceri Apark** was able to come and do a most interesting Zoom presentation, sharing her amazing experiences and wonderful photos of her five weeks walking the **Camino de Santiago de Compostela**, in Spain.

'Meeting the world right here in Surrey!' is the title for our talk on **Thursday 8th April**. **Louise Baumberg** has been working with refugees for several years. She has worked with families, but mainly with young people who have arrived alone, as a foster carer and, more recently, as a caseworker with Big Leaf Foundation, a charity which supports displaced young people in Surrey.



This will be a free **Zoom** meeting starting at **8.00pm**, but you're invited to join from **7.45pm** so you'll have a chance to chat with others. We look forward to seeing you.

BHC PUBLIC Personal Meeting Room: 946 391 4833 Password: 2021

All are welcome to our Zoom Nexus events, including men!

Our charity for 2021 is: **Phyllis Tuckwell Hospice Care**

For more information, please phone Janet Harvey on 423264 or Kate Kaye on 415296 or find us on www.bhcgodalming.org/groups

Nexus – building a network of friendship and support between church and community



A series of Zoom Meditations will take place from Palm Sunday - Easter Saturday, (with the exception of Good Friday) at 1pm daily, lasting up to an hour. These will include **Mary & Martha, Sitting at Jesus' Feet, A Prayer Walk, Journaling & Silence, Space and Meditation.**

On Easter Saturday, there will one session in the morning aimed at families and one early evening with music at its heart. Please feel free to make choices during the week to join in one or all sessions.

All warmly welcome, for a link to join in email: curate.godalming@gmail.com

Help & Support

Abuse Support — Call Surrey Against Domestic Abuse 01483 776822 – safety number; if you would prefer to make a call to the church (01483 421267), then we'd be willing to take some discreet information for you and act with you.
If your situation is threatening please ring 999.

Financial Relief Our church charity CFSF (Church Family Support Fund) has been quietly giving financial gifts to people in need and are always grateful to know of anyone in the wider community needing this support. See www.bhcgodalming.org/c19-givingandsupport or t: 01483 421267 to let us know of someone in total confidence.

COVID-19 Support — Help with shopping, urgent supplies or a friendly phone call. Email: coronaresponse@bhcgodalming.org or t: 01483 421267

Youth LISTENING SERVICE

The Cellar Community is offering an **early response listening service** for troubled **young people in our locality** in association with the newly formed 14-18 group, the Dan Eley Foundation & the well-established Trinity Trust Team.

Confidential appointments are being offered at no charge to any young person, either alone or with a friend or parent, who is struggling with the challenges of the current uncertainties and the emotional problems that they may be facing. The appointment would be held at a designated address with two of our team in attendance offering a sympathetic ear, words of comfort and encouragement with assistance in finding the right pathway for a purposeful future. All the team members are DBS checked and have experience or expertise in the field.

To book an appointment please phone: Chris 07818675528 or phone or text or Jill on 01483 414646

busbridge&hambledonchurch 



SING-A-LONG WITH TED

zoom, zoom, zoom!
FREE TODDLER SING ALONG

Tuesdays 9.45am on Zoom
e: Lisa.Olsworth-Peter@bhcgodalming.org
For joining in details

busbridge&hambledonchurch 



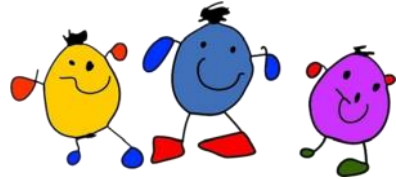
0800 804 8044

Daily HOPE

A free phone line of hymns, reflections and prayers



The Wharf Nursery School Virtual Tour



If you are looking for a nursery school place for your child for next September, then do watch the virtual tour of **The Wharf Nursery School** on the home page of the school website

www.wharf.surrey.sch.uk to get a full picture of what is on offer. You can also look at The Wharf Facebook page for recent updates of activities.

The Wharf Nursery School is a purpose-built nursery school in the centre of Godalming with excellent facilities and highly experienced teachers, nursery nurses and support staff. It is one of only four government maintained nursery schools in Surrey and offers free nursery places for 3 and 4 year olds, and FEET-funded or self-funded places for 2 year olds. There are spacious well-equipped classrooms, soft play and sensory rooms, a large fun-filled outdoor area and healthy lunches cooked on site.

The Wharf Nursery School has strong links with the local community and schools, and will provide a safe, happy and caring learning environment for your child's early years. We hope you enjoy the tour!

Local **FOODBANKS**

St Mark's Foodbank

St. Mark's Community Centre/Church,
Franklyn Rd, Godalming, GU7 2LD
Welcomes donations & open:
Mon/Tue/Wed 9.30am-2pm
Thursday 10am-1.30pm

There continue to be **trolley collection** points at Busbridge Church and Tuesley Lane (at the entrance to Godalming College) for donations for **St Mark's Foodbank & Wilfrid Noyce Community Store** on **Tuesdays 8.30am - 11.30am.**

Alternatively, the Wilfrid Noyce Community Store has collection boxes (8am-8pm every day) at:
31 Windy Wood Godalming GU7 1XX
12 Maryvale, Godalming GU7 1SW
16 The Paddock, Godalming GU7 1XD



Hearing Aid Repairs

Hearing Aid Clinics at the Old Rectory remain closed at present but Penny Naylor is happy to provide advice regarding how to access hearing aid maintenance and supplies. Contact penny.naylor@bhcgodalming.org or t: 01483 421267



Busbridge Design & Build

www.busbridgedesignbuild.co.uk

07968 022526

Your local firm, specialising in high quality new-builds, extensions, refurbishment and all other aspects of building works

Offering exceptional levels of service & attention to detail at competitive prices

Excellent local references and referrals

Contact us today for a quotation or to discuss your requirements

Computer Repairs



- ✓ Desktop & Laptop Repairs
- ✓ Wireless & Wired Networking
- ✓ PC Upgrades & Tune Ups
- ✓ Virus & Spyware Removal
- ✓ Data Backup & Recovery
- ✓ Server Support



ONSITE REPAIR OR COLLECTION
PROFESSIONAL AND RELIABLE SERVICE
RESIDENTIAL & BUSINESS CUSTOMERS ARE WELCOME



WE ALSO BUY OR REPAIR YOUR

BROKEN IPADS & MACBOOK LAPTOPS



REASONABLE PRICES AND FAST TURNAROUND



07809 401721



01483 419468



www.TechGuy.biz



michael@TechGuy.biz

RB Carpentry & Joinery



Cabinetry,
Carpentry &
Joinery

Kitchen Fitting

General Property
Maintenance

40 years
experience

References
available

Busbridge based

Contact :

Rob Beasley

0797 7944162

Pilates in Milford

Mondays: 9:30 am and 10:35 am
Location: BURTON PAVILION



- Pilates to strengthen the core stability muscles
- Improves posture, balance & co-ordination
- Relieves tension and stress
- Tones muscles and prevents injury
- Complements other exercise & relaxes
- Pre- & postnatal conditioning

A great way to get in shape. Easy to learn.

To register call 07767 811074
Or visit www.westsurreypilates.co.uk

Helen Roberts, Chartered Physiotherapist
MCSP, DipAPPhysSport HPC, APPI



Celebrate Godalming Museum's CENTENARY with "MY FAVOURITE THING!"

Godalming Museum is 100 years old! In January 1921 the former Borough of Godalming founded a public museum in Godalming's Old Town Hall, also known as The Pepperpot. Although the museum's collection is now looked after by The Godalming

Museum Trust, in 2017 the town's museum service returned to its local roots when Godalming Town Council took responsibility for the museum building and staff. Having moved across the road from The Pepperpot into a 15th century timber-framed building, Godalming Museum is still going strong and is now planning to celebrate its centenary.

Although the museum's doors are currently closed due to the pandemic, celebrations will start online, with "My Favourite Thing", a series of short videos looking at favourite objects in the collection. The Mayor of Godalming, Councillor Penny Rivers, chose the wonderful Godalming Town Clock as the first object. Other items in the series have been chosen by museum visitors, Trustees, volunteers and staff. Museum Curator, Alison Pattison, hopes to reach a total of 100 videos, one for each year of the museum's existence. "The whole point of the museum", she says "is to bring people together with the collections. I am fascinated by the choices people have made and by the reasons why these objects are special to them. As well as being of historical significance, many objects have a personal or creative resonance, opening doors for the memory or the imagination."

If you would like to nominate your favourite object please email Alison at museum.curator@godalming-tc.gov.uk or ring 01483 426510 to let her know which is your favourite and why.

The Mayor of Godalming, Cllr Penny Rivers has chosen the first item and says, "My favourite thing in our Museum, is the clock which hangs over the reception area. This clock used to be the Town clock by which all residents could set their time-pieces. It was installed in the Pepperpot in 1815."



"My Favourite Thing" videos will be shared on the Museum's Facebook page and website, www.godalmingmuseum.org.uk. You can also visit the online shop for local history books, themed gifts and to explore many fascinating historical photographs. Follow the museum on Facebook www.facebook.com/godalmingmuseum to see daily posts of photographs from the collections.

J. Morris

Established for over 50 years.

LOGS THAT BURN. KINDLING THAT LIGHTS.

Hardwood logs for
open fires and log burners.
Collection & delivery 7 days a week.

COMPOSTS MULCHES GARDEN SUPPLIES

Load sizes from 1m3 to 7.5t.
Delivery 7 days a week.

www.logsthatburn.co.uk

07587 343 572 / 01483 423193

logsthatburn@gmail.com

Compton Nursery, The Street,
Compton, Guildford, Surrey GU3 1EJ

Honey Landscapes

Garden Maintenance and Construction



Patios & Drives • Hedges
Stonework & Brickwork
Fencing • Planting
Lawns large or small
Turving & Seeding

Tel: 07952915547

honeylandscapes@gmail.com



Donline
COMPUTER
CONSULTANCY



*Donline offers professional
computer engineering services to:
Small Business, Home Office, &
Home Users.*

*Donline can assist with all of your
IT requirements: Supply & installation of
hardware and software, upgrades,
networking, system and data recovery,
printing, security, cloud computing,
technical support and training.*

Call: Don Tocher, on
07870-643486 or 02392-989594



Microsoft
CERTIFIED
Systems Engineer

Or contact Donline, online:
Web: www.donline.co.uk
Email: don@donline.co.uk

A J Bennewith & Co

CHARTERED ACCOUNTANTS

We are an independent practice
that has been offering a personal
service for over 30 years

Contact us for all your
accounting needs, tax needs
and a free initial consultation

Registered Auditors
Personal Tax Returns
Companies & Charities

Tel: 01483 539 777
www.bennewith.co.uk



Fed up with Ironing? Let the **Ironing Fairy** do it for you!



You are not alone!

Ironing is the most dreaded household chore. We regularly heard people wishing for a "ironing fairy" to take it off their hands, which is why we started our business.

Why choose us?

- ✓ Free collection & delivery
- ✓ Turnaround in 48 hours
- ✓ Professional service

We can work around you

Whether you require a regular weekly or 'on demand' ironing service.

01483 428044 07809 401794

www.ironingfairy.net



R. & R. Roofing

Guildford

Roofing Contractor & General Builder



- NEW ROOFS & REPAIRS
- CHIMNEY POINTING & REBUILD
- SLATING • TILING
- HIGH PERFORMANCE TORCH-ON FELTS
- FLAT ROOFS • LEAD WORK
- GUTTERING • uPVC FASCIAS & SOFFITS
- EXTERIOR MAINTENANCE

FREE ESTIMATES EMERGENCY SERVICE

01932 344660

07956 554604

7 Rivermead Byfleet KT14 7BZ

Email: russ@rr-roofing.co.uk

TUSCAN VILLA

Available for holiday lets

*Between San Gimignano
and Volterra*

Recently restored Separate Barn
Sleeps 3/4

Beautiful large secluded villa

In gardens of one hectare

Sleeps 8/10

4 large double bedrooms

2 large sitting rooms

Study, dining room, utility
kitchen/diner

4 bath/shower rooms

15 x 6m infinity pool

Tennis court

www.ilcolto.co.uk

Tel: 01483 808105 or
theresalove440@yahoo.co.uk

Allford

BESPOKE
CABINET
MAKERS

Interiors

For beautiful, bespoke, fitted or freestanding furniture, Allford Interiors designs and hand crafts innovative solutions for all our clients.

We collaborate closely with you from conception to completion. Each commission is personally designed, created and installed from our workshop in Milford.

Previous commissions include kitchens, studies, bedroom and bathroom furniture, bookcases and creative storage solutions.

Using solid timber or high-quality man-made materials, we can create anything from traditional shaker style furniture to unique contemporary pieces.

For a free design consultation, contact Stephen Allford on 07723717897 or for more information see www.allford.co.uk

SMALL ADS

VERY LOCAL TOP QUALITY TWO YEAR OLD HARDWOOD LOGS FOR SALE. Felled & processed just a mile from centre of Busbridge. Pick-up load (1.2cm) £90, Dumpy bag (0.8cm) £70 delivered to your drive. **andrew4logs@hotmail.co.uk** or call Andrew on: **01483 424934** or **07952 429071**

GARDENER TRAINED WITH THE RHS, HARD WORKING AND RELIABLE. Will undertake weeding, pruning, mulching and bed work plus more from £20 per hour and medium hedge cutting service priced per job. Contact Matthew on **01483 421547**

HANDY HECTOR THE ODD JOB MAN. Anything considered **07506 598939**. Please see website for more information: <https://www.itforinvestmentbanking.com/handy- Hector>

MATHS TUTOR Experienced tutor and teacher now has sessions available. All levels up to GCSE. Including preparation for Senior School entrance exam. Non-Verbal and Verbal Reasoning also offered. Please call Linda on **07891 708202** or email linda.mlja@sky.com

QUARRY HILL STORES

17 Quarry Hill



Paper Boys and Girls Required in Busbridge

Newspaper Delivery Service in Busbridge
Contact: Mr S. Patel

Tel: 01483 416938

PC Doctor Godalming

Fixing computers of all shapes and sizes

If your computer is run down, unreliable and generally out of sorts then why not call for professional help and advice in your own home. All types of computer or network problems dealt with on a "No Fix No Fee" basis.



79 Pullman Lane, Godalming, GU7 1YB

Tel: 01483 424378 | 07876476990

email to: mike.lagan@pcdocgo.co.uk



MEMBER OF
THE BRASS ASSOCIATION



Karen Regan
Foot Health Professional

Heart & Sole

KAREN REGAN DipFHP MCFHP MAFHP

MOBILE FOOT HEALTH PROFESSIONAL

WWW.HEARTANDSOLE.SITE

07776309567

Paul Clifford

Property Services

Qualified "Part P" Electrician

B-Tec Trained Plumber

Plumbing Electrical

Kitchens Bathrooms

Any job from a refit to a washer or fuse

Fully Insured References Available

Paulclifford60@gmail.com 07889 073853



Printed by Linnerlake 07590 047750

www.linnerlake.co.uk

linnerlake@gmail.com

We ask you to please make sure that those people who are the focus in photos have given their consent to be included in our publication & on our website; in the case of minors we ask that this is parental consent. "The Bridge" would like to thank advertisers for their support, but to make clear to readers that it does not offer any endorsement of the goods or services advertised. Views expressed in the articles are not necessarily those of the Editor or Busbridge Church. The Editorial Team reserve the right to edit any articles submitted for consideration for publication.

Advertising

SMALL ADS are designed to advertise local services.
£5 per insert, 40 words maximum.
For Sale items £2,
20 words maximum.

Please contact Jacky at:
jackybeale@hotmail.com

DISPLAY ADVERTISING is for businesses who wish to advertise in full, half, quarter or eighth page format.

We deliver free of charge to over 1850 local homes. Please contact Cathy at:

editor.atthebridge@gmail.com

We reserve the right to decline advertising or payment for advertising at our discretion.

EDITORIAL TEAM

Cathy Brook (Editor)	420633
Jacky Beale (Small Ads)	423768
Christine Payne	417320
Chris Sollars	Lorna Sherwin
Lesley Reeves (Treasurer) via email at:	bridgefunds@btinternet.com

Write to us:
c/o Church Office, The Old Rectory, Old Rectory Gardens, Godalming GU7 1XB.
St John the Baptist Church
Rector: Rev Simon Taylor
01483 421267

COPY DATE

MAY/JUNE 2021 EDITION

WED 14TH APRIL

PUBLICATION DATE: FRIDAY 30TH APRIL



Busbridge DJ
& Music Producer

www.mataz.co.uk
theofficialmataz
theofficialmataz
[youtube.com/c/MatazDJ](https://www.youtube.com/c/MatazDJ)



Vanessa Edwards Hypnotherapy
Cognitive Hypnotherapist
DipCHyp HPD NLPprac

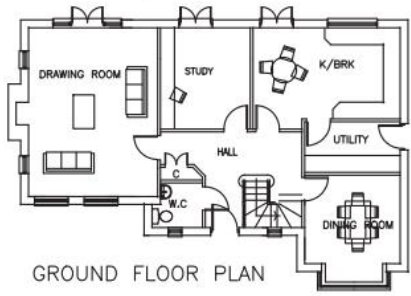
www.vanessaedwardshypnotherapy.co.uk
info@vanessaedwardshypnotherapy.co.uk
07523101952

I specialise in helping women with anxiety, stress, confidence issues and weight loss. I also work with phobias, OCD, bad habits, smoking, depression and insomnia.

If your issue is not listed here please contact me.



FRONT ELEVATION



GROUND FLOOR PLAN

PLANNING & DESIGN SERVICE LLP

Architectural drawings for
Extensions, Alterations &
New Build

Free No Obligation Quotations

Tel: 01483 417555
Mob: 07818 014357

www.architecturesurrey.co.uk
simonplanning.design@btinternet.com



calico

Open Mon—Sat

13, High Street, Godalming
Curtains - Blinds - Fitting Service



01483 421990



calico-curtains@hotmail.com
www.calico-curtains.co.uk

