

The **Bridge**

MARCH & APRIL
2023



www.bhcgodalming.org/thebridge

PRIOR'S FIELD

The place to achieve



GSA Girls' Boarding and Day School 11-18, Godalming Surrey

Prior's Field is a school where the spirit is creative and enterprising - it champions girls' individual talents.
Good Schools Guide

Achievement in all its forms is alive and kicking in every part of their school day.
Tatler Schools Guide



PRIOR'S FIELD - THE PLACE TO ACHIEVE

Visit our website or contact our Admissions team to book your place at our Spring/Summer 'Meet the Head' Open Mornings
01483 810551 www.priorsfieldschool.com

Registered Charity No. 312038



FROM THE EDITOR

We are pleased to have two new members in The Bridge editorial team - Gemma Taylor and Emilia Guerra. Thanks to them and the existing team for helping put The Bridge together. This month features a Busbridge History walk (pages 4-6) by Martyn Sandford with more additional detail on the church website and via a walking App. Please give us feedback on this approach!

David Brockman

Copy date for next edition is April 19th

editor.atthebridge@gmail.com



Contents

- 4 Busbridge History Walk
- 9 Review of The Journalist (café)
- 12 Yew Tree Café's first birthday
- 14 News from Busbridge Junior School
- 16 The end of an era for Busbridge Tennis Association
- 18 Church calendar
- 20 A word from Rev Simon Taylor
- 24 Prime Time
- 27 Nexus News
- 28 Busbridge weather records 2022
- 33 Godalming Museum

Front cover: Snowdrops and Busbridge Church by Gemma Taylor

This page (top): Snowdrops and Busbridge Church by Ben Rogers

Walk with The Bridge: Busbridge History Walk

This month's walk is shorter than usual but offers a special challenge. Can you find your way using a 150-year-old map?

This is the Busbridge History Walk and in just over three miles you will discover how Busbridge came to be and how it gradually changed to be the place we know today.

Length 3.1 miles; ascent 65m

We will visit our own beautiful church with its 'Arts and Crafts' connections, discover how education came to Busbridge, find out what a 'thunder tower' was used for (**see picture below**), and who generously bequeathed his extensive collection of artefacts to the Victoria and Albert Museum in London. If coffee and cake is more your interest, you will be pleased to know that there are two cafés along the route!

Our walk starts at St John's Church (aka Busbridge Church). You may have been to the church before, perhaps many times, but pause this time to look more carefully. If this is your first visit, take the opportunity to enjoy the peacefulness and to take in the stained glass, the unique chancel screen, and the various memorials. Who is remembered here and when were the memorials put in place?

From the church we cross the Brighton Road to see the first Busbridge School and visit the mysterious thunder tower. After retracing our steps a short way, we descend the hill (did a royal person really get stuck in the mud here?) to the old settlement of Crownpits. Somebody made two generous gifts to the community but who was it and what did he give? By following the old lanes and pathways that criss-crossed the farmland before the houses came, we visit the County Grammar School and our local convent at Ladywell.

Finally, we come to the oldest part.

Tiw seems to have been important here in ancient times, but Godalming's first church was also here. And what about the place that gave Busbridge its name? Hidden away, it's rarely seen but was the centre of an estate going back to William the Conqueror and beyond.

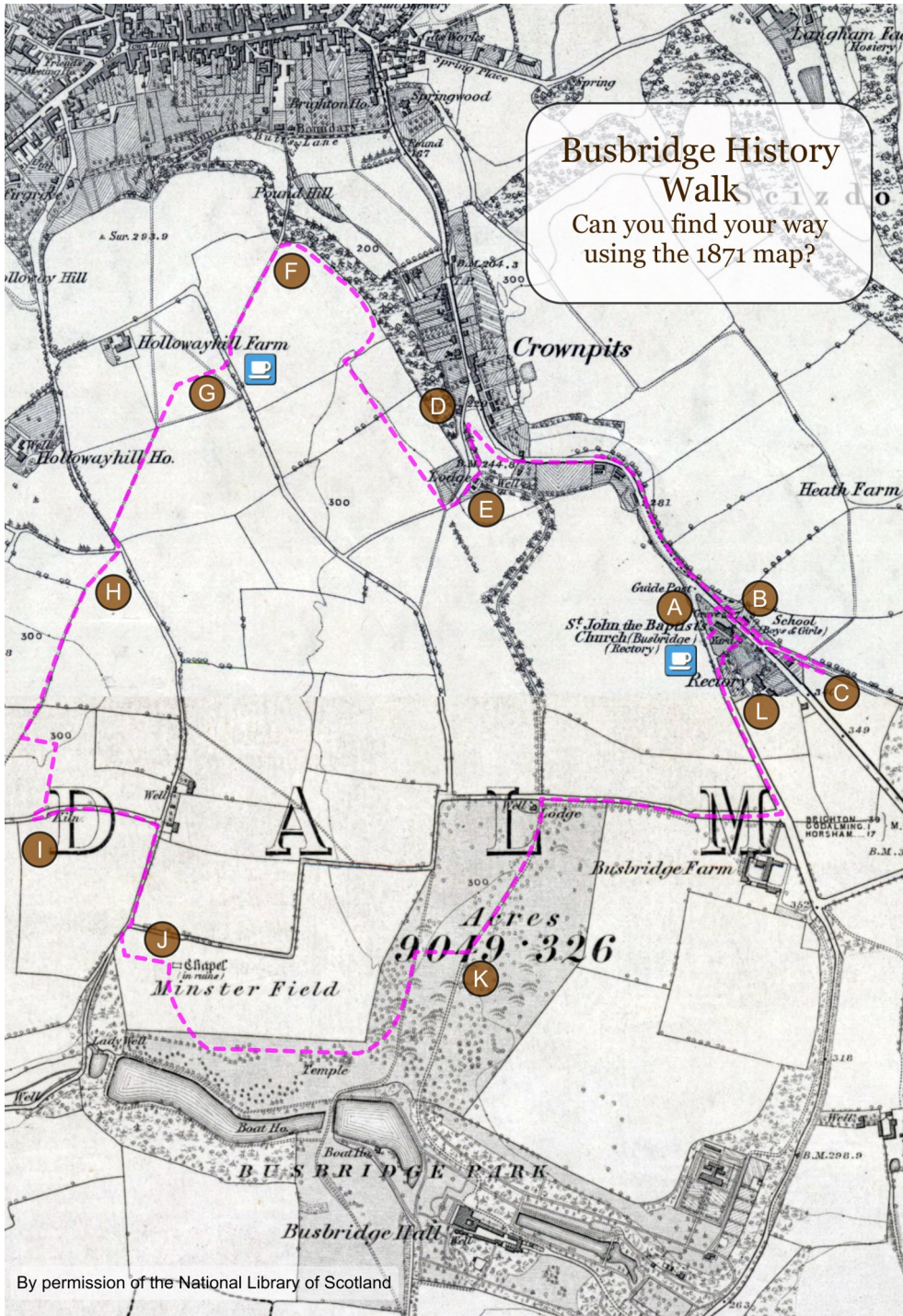
Full details of the walk can be found on the Church website - see <https://www.bhcgodalming.org/thebridge> (1st QR code below)

You can print a copy or download it to your phone to take with you. You can also follow the route with an app and GPS from Plotaroute.com: <https://www.plotaroute.com/route/2029381?units=miles> - see 2nd QR code)



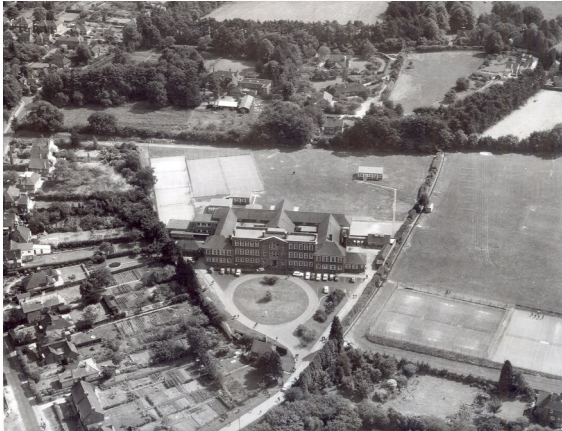
Martyn Sandford





Walk with The Bridge: Busbridge History Walk (continued)

Photos of places visited on the walk: past and present.



Godalming College



Convent Field



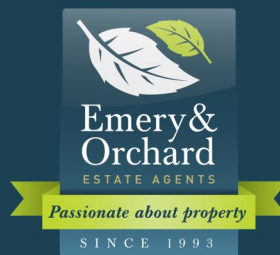
Brighton Road (Crownpits)



(The original) Old Rectory



Crownpits



EMERY & ORCHARD

Godalming's **Local Independent Agent**
Established for over **25 years.**

Property to sell in Godalming
or the Villages?

Then contact Tony Emery
or Jeremy Orchard on
01483 419 300
to arrange a
Free Market
Valuation.

20 High Street
Godalming
GU7 1EB
www.emery-orchard.co.uk





Godalming Cricket Club are welcoming new players to both their men's and ladies squads ahead of the 2023 season.

Whether you're new to the area, looking for a new challenge or just keen to get back into the game, why not come to one of our pre-season net sessions to have a bat & bowl, as well as getting to know our friendly members?

Or do you have a love of cricket, afternoon teas, and a local club atmosphere?

Lots of volunteering opportunities exist at Godalming Cricket Club; in particular we are looking for Umpires for the 2023 season and beyond.

Full training & support can be provided for anyone interested in being involved in this wonderful part of our local community, with the chance to officiate at many of the stunning grounds we visit in the Surrey leagues.

For more details please contact the club
info@godalmingcc.co.uk

Review: The Journalist Café

New to the High Street, The Journalist café is run by Merve Topaloglu, who you'll not be surprised to learn used to be a journalist before embarking on her new venture as a coffee barista, hence the name. I am not a coffee aficionado – my usual would be anything decaffeinated – but when the local community social media pages began hailing The Journalist's coffee as THE best in Godalming High Street, I was keen to check it out.

Small and intimate, overlooking The Pepperpot and down into Church Street, The Journalist has arguably one of the best views on the High Street from which to enjoy your daily cup (if you're lucky enough to get a spot at the window). Whilst there is no secret formula to her coffee, Merve enthuses "we take a lot of care with every stage of the preparation. We are working with a great supplier that has proven itself in the coffee field. I'd been to London for many tastings before we crossed paths but I think I found the best coffee beans". For Merve, it's the bringing together of the best coffee beans, using the best machine to grind them and the barista (Merve herself) taking care with every cup to make delicious coffee, which she recommends in the 8oz serving as that's how it tastes best. Certainly this is borne out by the social media comments and even whilst I was there, I heard a happy customer praising her on "the best coffee on the High Street!".

So having had my usual Decaf Flat White on my first visit and after chatting with Merve about her coffee and the local buzz around it, I went back the following Friday with a friend for a fully-caffeinated White Americano. I can confirm it was delightfully good. We also enjoyed lunch. The modest menu boasts a selection of Grilled Sourdough Toasties as well as brunch options such as Eggs on Toast and a Granola Bowl. There is also a daily selection of fresh pastries (both savoury and sweet) and cakes to sample.

My friend opted for the Chorizo and Cheese Toastie with a Chai Latte, whilst my love of Asian and spicy food drew me to the Kimchi Cheese Toastie. We decided to share and both were delicious. Merve is continually alternating offerings on the menu such as the recently added Avo on Toast (with feta and seed mix). There is also a host of intriguing and lattes such as Turmeric and Beetroot as well as Chilli Hot Chocolate.

The Journalist welcomes well-behaved dogs with water available and a treat jar for your canine companions.

While I may not be a coffee aficionado, I certainly enjoyed the coffee, toasties and warm welcome from Merve on my visits so I will certainly be going back to sample more from this small and innovative coffee shop in Godalming.

The Journalist is open 9.00am to 4.00pm Monday to Saturday and 11.00am to 3.00pm on Sunday.

Gemma Taylor



Busbridge Parish Register

Weddings

17th December - Kristina Miller & Paul Harding

Funerals

2nd February - Andrew Turner

13th February - Roy Keating



Appliance Service and Sales

- Repair of most main makes
- Built-in and Freestanding
- New appliances with installation
- * Built in and American F/F

Checkatrade.com
Where reputation matters

**Cooker/Oven
Dishwasher
Washing Machine
Tumble Dryer
Fridge/Freezer ***

Elstead (01252) 705198

www.applianceexpert.co.uk



Printed by **LINNERLAKE**

LITHO & DIGITAL PRINTERS

Established family business, based in Guildford with free delivery to Godalming. Leaflets, posters, booklets, order of services, wire bound books & more

www.linnerlake.co.uk

07590 047750

linnerlake@gmail.com

Paul Clifford
Property Services
Qualified "Part P" Electrician
B-tec Trained Plumber
Electrical, Fuse Boards
Extra Sockets, LED Lighting

Fully Insured References Available

Paulclifford60@gmail.com 07889 073853

QUARRY HILL STORES

17 Quarry Hill



Paper Boys and Girls Required in Busbridge

Newspaper Delivery Service in Busbridge

Contact: Mr S. Patel

Tel: 01483 416938



**BELIEVE.
ACHIEVE.
SUCCEED.**



St Catherine's Prep, Bramley

GSA Day & Boarding School since 1885 | 4 - 18 years | Guildford GU5 0DF

St Catherine's is a place where your daughter will develop a lifelong love for learning, in a supportive and homely environment. Both in and outside the classroom, she will experience a range of opportunities, and discover her strengths and passions.

From this foundation, she will grow in confidence and develop a curiosity about everything around her. She will leave our Prep School believing in her abilities and ready to embrace new challenges in senior school.

OPEN EVENTS

Thursday 9th March 2023

Friday 12th May 2023

Friday 9th June 2023

01483 899665

prepadmissions@stcatherines.info

stcatherines.info/prep



Happy 1st Birthday!

TO THE YEW TREE CAFÉ

Thanks to all our lovely customers, ♥
and 3 cheers for the volunteers! ♥

Almost a year after opening, the Yew Tree Café at Busbridge Church has become a popular local fixture, successfully bringing the church closer with the community as hoped.

Visitors drink up the friendly atmosphere created by the team of staff and volunteers who believe the welcome and hospitality is as important as the highly rated coffee and cakes. After 12 months of regular weekly shifts we certainly want to sing "For they are jolly good fellows"!

Managers Lizzie, Donna and Owen have enjoyed watching new relationships form, and serving all sorts of customers, with their bikes, babies, dogs and even ducklings. There was much excitement when Kate Winslett's film crew popped in regularly during the filming of BBC drama "I am Ruth". Though Kate never quite made it in person, Lizzie likes to think they made a latte or two for a Hollywood A-lister.

People travel for the top-selling Guinness loaf, and this is the cause of grave disappointment if the volunteer bakers haven't kept up with demand. Staff manage this graciously and with good humour, but if you're not in the mood or feeling a bit low, the café team is happy to listen, or let you be. Prayer request cards are available on the counter which the prayer team collect in confidence. So aside from being a great place to grab a great coffee or light lunch, this is what really makes the Yew Tree special.

The café will celebrate its 1st birthday on 23rd March. Do pop in and say "Hi", write a google review or wish the café a happy birthday on Facebook and Instagram!

"WHAT A FAB LITTLE CAFE: GORGEOUS VIBE, DECOR, STAFF, CAKE AND COFFEE."

5.0 ★★★★★ 26 Google reviews ⓘ



GREAT COFFEE & CAKE SERVED WITH LOVE NOT FOR PROFIT FOR CHURCH & COMMUNITY

MON - FRI TERM TIME 8.30 AM - 4 PM
SATURDAYS & SCHOOL HOLIDAYS 10 AM - 4 PM

📷 📱 @yewtreecafebusbridge





Godalming Children's Choir
For School Years 3 – 6

Do you enjoy singing and would like to sing with others who do? Keen young vocalists have a great opportunity to learn singing in harmony with professional leaders Sam, Oli and Martina, and Godalming Choral Society volunteers.

Tuesdays 5-6pm during term-time at Godalming United Church.

First taster session is free – come and give it a go.

email gcc@godalmingchoral.org.uk



Saturday 18 March
7.30pm -
join Vivace
Chorus at G Live as

Vivace
Chorus

they perform Duke Ellington's Sacred Concert and music by Bob Chilcott and Will Todd, accompanied by some of the UK's leading jazz musicians. See vivacechorus.org.uk for more information.

Open the book

We are looking for people who can spare an hour a month on a Monday afternoon, to be part of a local infant school assembly.



A small group meet each month. This would require a small acting role of a bible story with words and costume, both of which are provided.

Please contact Catherine Lawton
catherine@lawtonfamily.net
07973927233

Hugh Tanton
GARDEN DESIGN

Garden Design & Landscaping Solutions
From a Qualified Professional

- Garden Design
- Border Rejuvenation
- Planting Plans
- Solutions to Problem Areas
- Planting and Landscaping
- Friendly Advice and New Ideas

T: 01403 713 714 M: 07502 277 911

E: enquiries@hughtantongardendesign.co.uk

To find out more please visit

HughTantonGardenDesign.co.uk



H.D Brooks & Sons
Painters & Decorators

- Trusted, Rated and Reliable
- All aspects of interior and exterior painting and decorating undertaken
- High end spray finishing
 - UPVC Spraying
 - Dustless Sanding

Proud members of

Checkatrade.com
Where reputation matters
Rated 9.96 as of 2022

Contact us for a free quote or advice

07557 342518

info@hdbrooksandsons.co.uk
www.hdbrooks.co.uk

Busbridge Junior School

It has been a really enjoyable Spring Term so far. Lots of fab learning taking place, and plenty of sporting events. Mid-January our Y4 children spent an enchanting and exhilarating hour at G-Live listening to and participating in a classical music concert. The children were buzzing when they got back to school.

Earlier in the term we also had our **Year 3 Roman Day and Year 4 Viking Day**. As you can see from the pictures below, the children really enjoyed this opportunity.

Freya (Y3) – *I played a Roman lady who had a massage in the Roman baths.*

Alex (Y3) – *I was a slave who had to massage posh people in the Roman baths. It was really good.*

Sean (Y4) – *I was a Viking warrior. Taking part in the acting was really fun.*



Evelyn (Y4) – *When I was a Viking I was accused of poisoning pigs, so I had to go through trial by boiling water. They found me innocent!*

In January the school had an external audit of our **Safeguarding** policy and practice carried out by a safeguarding-in-school consultant. We are pleased (but not surprised) to say that the consultant was very positive about all we do to keep our BJS children and staff safe.

In previous articles, I shared with you our plans for the BJS Sport For All **MUGA Project**. We have some extremely good news on this front. Firstly, donations and fundraising through the school have raised an impressive £25,000 (approx.). Huge, huge thanks to all involved in raising this sum. Secondly, Godalming Town Council have made two significant grants to the school, totalling £125,000, towards the cost of the MUGA. This means that we are good to go: planning permission is in and tenders out. Fingers crossed the MUGA will be up and in use for Autumn '23. It will be available for community use, so in due course do contact Kirsty our School Business Manager to check availability.



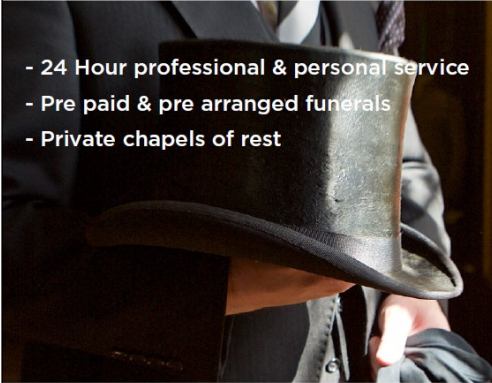
Richard Catchpole (Head)

MULLARD

FUNERALS GODALMING SINCE 1857

INDEPENDENT FUNERAL DIRECTORS
& MEMORIAL MASONS

- 24 Hour professional & personal service
- Pre paid & pre arranged funerals
- Private chapels of rest



01483 860279 • www.mullards.uk



121-123 High Street, Godalming
Surrey, GU7 1AG

Conservatoire Concerts

Conservatoire Concerts invite you to their next concert of the season which will take place on Saturday 11th March at Godalming Baptist Church, 7.00pm start.

Aquilae String Quartet from Guildhall will be performing three delightful quartets, by Haydn (The Fifths), Dvorak (The American) and Mendelssohn's Op 13 in A minor. Booking is recommended via

www.conservatoireconcerts.org.uk or by emailing suzanne.cacciottolo@gmail.com

These concerts are FREE with a retiring collection towards expenses.



JOIN US ON OUR OPEN DAY
5TH MAY 2023
9:30AM - 12PM

 **ISI** Independent Schools Inspectorate
Pupil achievement: Excellent
Pastoral Care: Excellent



LONGACRE SCHOOL

A THRIVING CO-EDUCATIONAL PREPARATORY
SCHOOL FOR BOYS AND GIRLS AGES 2 - 11 YEARS

WHERE HAPPY HEARTS
GO ALL THE WAY

Contact our registrar or visit our website to register your place at our open day, or to book your one-to-one tour with Headmaster Matthew Bryan

01483 893225

admissions@longacreschool.co.uk • www.longacreschool.co.uk

Hullbrook Lane • Shamley Green • Guildford • Surrey • GU5 0NQ

On Court: The Legacy of Chris and Maggie Jagger

It's the end of an era at the Busbridge Tennis Association. The Jagers, our fearless founders and devoted leaders, are leaving – for the Isle of Wight of all places!

It's the end of an era at the Busbridge Tennis Association. The Jagers, our fearless founders and devoted leaders, are leaving – for the Isle of Wight of all places! As these towering pillars of our little community prepare to pack up and ship out, I'd like to spotlight one of their most successful projects: making me excited for vigorous exercise on a cold Tuesday evening.

The good doctor Chris and his wonderful wife Maggie (see picture) founded the BTA in 2008, and at time of writing they both still attend the open club night every Tuesday. Chris giggles in glee when a good serve comes his way. If you try to trick him with a drop shot, he shouts, "Oh no you don't!" and sprints forward (in his mid 70s) to meet the ball and fire it back. Maggie is an assassin; she will kill you. I've seen her turn, mid conversation with someone on the adjacent court, and swat the ball right into the back corner like it was an annoying gnat. This is a fast-moving projectile. There are people here who can manipulate it like a magic trick.



Before the BTA started, the Godalming Rec had only two hard courts, both in poor condition. Dr Jagger and a few friends started playing regularly on these courts around 2007, and it wasn't long before they approached the Waverley Borough council to ask about repainting the lines. Chris, being Chris, immediately befriended everyone on the council. His ambitions for more (and better) local tennis proved infectious, and soon they were working to raise money for a full re-vamp. It barely took a year. Try meeting Chris in person – it's very difficult to not give him money. After a full construction project, the BTA was born with four full-sized courts and Chris and those initial friends as directors. Soon after, a weekly open club night was established. Anyone can come along, member or not. At present, club nights are on Tuesday.

I joined last Summer. Walking up to the courts was terrifying. Everyone looked so professional, chatting while they effortlessly pinged balls back and forth to warm up. I said I was here for club night and Chris immediately called for a round of applause. I was shocked. These people were unabashedly and unironically celebrating that a random stranger was joining them. They didn't know my name, nor that I still had to serve under-arm and was utterly pants at tennis. But even after they figured that out, this tight-knit family unpicked a few threads and welcomed me into the fold. Over the last eight months I have fallen in love with the community here at the BTA, and I've come to see tennis as something truly beautiful. A perfect balance of physical and mental duelling

(unlike Chess-Boxing which is just madness).

It's the wonderful diversity of playstyle and skill within the BTA that has shown me just how unique and exciting tennis can be. There are two players – father and daughter – who if they end up on opposite sides of the net their doubles partners may as well take a call or eat some wine gums (provided by Chris & Maggie). They'll occasionally lock horns in an epic inter-generational battle, competing to see who can fire the ball faster and lower over the net. There's also the Johns, two unrelated players with a shared name and talent for spin, though they use it completely differently. One John lobs tricky shots to your baseline, disguising the angle at which they'll bounce. The other John can simply kill any ball's momentum and return your serve to a corner near the net that you will never reach in time.

The legacy of Chris and Maggie lives in people. We've all been touched by these two – their endless generosity, their unceasing spirit, their infinite jest. As we prepare to wave them off this Spring, why not try a club night? Maybe you'll fall in love too. See if you can lob high enough to avoid Ewan's balletic jump shots. Watch out for Andrew's killer serve. Don't try to trick Eliot – he's always one move ahead. Good luck getting past Mel. And under NO CIRCUMSTANCES forget that Maggie is left-handed. You will be promptly assassinated. Don't worry if you can't keep up yet – stick around after play and wait for Eden to invite you to the pub. We'll all be there. Almost.

Milo Wilson



busbridge&hambledonchurch 

WE HAVE A GREAT ROLE WITH CHILDREN IN OUR CHURCH AND COMMUNITY

CHILDREN'S Pastor 4-11s

Go to www.bhcgodalming.org/job-vacancies to find out about this full time role (part-time considered too) with competitive salary.

Busbridge Church Services

9.30

CONTEMPORARY 

12, 19, 26* MAR | 23 & 30 APR

BAND LED WORSHIP + CHILDREN'S GROUPS
REPLACED BY MUDDY CHURCH ALL AGE ON 1ST SUNDAYS
HOLY COMMUNION 3RD SUNDAYS

10.35-11.15 Coffee together between
services in the Yew Tree Café

11.15

CLASSIC 

5, 12, 19, 26 MAR | 23 & 30 APR


COMMON WORSHIP WITH HYMNS
HOLY COMMUNION 1ST SUNDAYS

18:00

EVENING NOT 3RD SUNDAYS

5, 12 & 26 MAR | 2 & 23 APR

EXTENDED TIME FOR WORSHIP & PRAYER
NOW WITH YOUTH ON 1ST SUNDAYS
HOLY COMMUNION 4TH SUNDAYS

 You can watch these services live and
on demand on YouTube [BHCgodalmingonline](https://www.youtube.com/channel/UCBHCgodalmingonline).



**ALL
INVITED TO
MUDDY
CHURCH**
9.30AM ON 1ST
SUNDAYS

5 MAR

HAMBLEDON CRICKET GREEN

[///airship.springing.streaking](http://airship.springing.streaking)



To find Muddy, you can use
the what3words location.
Download the [///](http://airship.springing.streaking) app.

SPECIAL DATES:

26TH MAR* THE CONTEMPORARY SERVICE WILL BE AT ST PETER & ST PAUL'S CHURCH
2ND-16TH APRIL SERVICES COMBINE FOR THE EASTER HOLIDAYS
AND THERE ARE NO CHILDREN'S GROUPS

DO KEEP AN EYE ON THE NOTICES WHICH CAN BE FOUND ON THE WEB SITE:

WWW.BHCGODALMING.ORG/NOTICES



OR CONTACT VIC.HICKS@BHCGODALMING.ORG TO SUSCRIBE TO EMAIL.
WE LOOK FORWARD TO SEEING YOU!

busbridge&hambledonchurch 

   
Follow BHC Godalming



E A S T E R

with Busbridge Church

2ND APRIL

PALM SUNDAY

10AM SERVICE FOR PALM SUNDAY
ACTIVITIES FOR CHILDREN

6PM EVENING SERVICE
+ YOUTH TOO

3RD-8TH APRIL

HOLY WEEK

8PM MON-WED
HOLY WEEK REFLECTIONS
THE WOMEN OF HOLY WEEK

MAUNDY THURSDAY

8PM COMMUNION SERVICE
[AT HAMBLEDON CHURCH]

GOOD FRIDAY

9.30AM GOOD FRIDAY SERVICE FOR ALL THE FAMILY

11.30AM
GODALMING ACT OF WITNESS [OUTSIDE
WETHERSPOONS ON GODALMING HIGH STREET]

12 NOON AN HOUR AT THE CROSS
[HAMBLEDON CHURCH]

1.30PM
HAMBLEDON CHURCH-2-BUSBRIDGE CHURCH
HOT CROSS BUN CROSS COUNTRY ADVENTURE
DEPART FROM HAMBLEDON CHURCH.

HOLY SATURDAY

3PM EASTER GARDEN SERVICE + EGG HUNT IN THE OLD RECTORY GARDEN
PLEASE SIGN UP TO THE BIGGEST EGG HUNT IN BUSBRIDGE!



He is Risen

9TH APRIL

EASTER DAY

6.45AM

CHURCHES TOGETHER SUNRISE SERVICE
AT THE LADYWELL SHRINE, MINSTER FIELD

10AM

EASTER DAY CELEBRATION
SERVICE WITH COMMUNION



16TH APRIL

10AM
COMBINED SERVICE
(CHILDREN WELCOME IN THE SERVICE)

More details



A Word from Rev Simon Taylor

There's a story of a drunk person who was staggering home and didn't see a lamp post. The person walked into the lamp post and ended up on the ground. Getting up, the person tried again but the same lamp post was still in the way. This went on for many hours. The person could not walk past this problem lamp post. In the end, the person stood still and said to the lamp post "Alright, I give up. You've got me surrounded. I surrender."

Can you identify with trying to get somewhere, whether it is literal walking or an aspiration but the more you do the same thing, the more you come up against the same obstacle?

The usual response is that we are trying to do the same things so step around the problem with a different solution. Maybe. I'd like to offer a different view than the usual, from the Bible. What if the problem isn't a problem at all? In the story, someone walking down a street isn't a problem and the lamp post is just doing what lamp posts do. The problem is that the person isn't aware of what's going on – that's the problem. The person doesn't look at where they are heading so they smack into a lamp post!

My experience of life is that aware people are wise people. Wise people know where the metaphorical problems – the lamp posts – are and wise people don't take long to realise that it isn't the lamp post that is the problem. Often the problem starts within us, from what has brought us to be staggering around, or in how we act or what we have come to expect.

What do we do when we meet those lamp post moments? Wise people make the best use of that moment to change by being aware of where they are heading and where they have come from. The drunk person's first change could have been not to be so drunk in the first place. A wise question for the person might be 'what made you think you needed to be like that'? It might even have got them past the lamp post!

There's a line in the Bible which sums all of this up. It describes reality that is staring us in the face like a lamp post – it says that things do not go well because that is what the days of life are like. Wise people recognise where we are in this. This line offers a way to walk through life so that the lamp post moments don't poll axe us and I offer this to you in the challenges we face: ***"Look carefully then how you walk, not as unwise but as wise, making the best use of the time"*** Ephesians 5:15-16

As a community around Godalming, God invites us to improve our walk by making the best use of our time in a way that shows something that we all need a healthy dose of right now – wisdom. Where does wisdom come from? It comes from how you choose to walk through life by knowing where you are heading. This is our theme as a church this year – in the challenging times we face, wise people know the source of life who said "Take courage! It is I (Jesus). do not be afraid".



Simon Taylor



St Hilary's

Preparatory School, Godalming

"Happy, charming and academically successful"
The Good Schools Guide



Open Morning Saturday 22 April

Personal tours by arrangement



To book your place on our Open Morning
visit www.sthilarysschool.com, scan the QR code or email admissions@sthilarysschool.com

@sthilarysschool @StHilarysSchool St Hilary's School Trust



BEVAN WILSON

Physiotherapy & Sports Injury Clinics

Highly-regarded clinics in Guildford Boxgrove GU1,
Godalming and Wonersh, providing professional
treatment and specialist advice to help you
achieve your goals....

- Physiotherapy & Rehabilitation
- Spinal & Joint Pain, Stiffness
- Pilates & Women's Health
- Post-operative Rehabilitation
- Flexibility, Mobility & Balance
- Children & Adolescents
- Sports Injuries & Massage
- Orthotics & Joint Bracing
- Acupuncture & Electrotherapy
- Working Health & Posture
- Neurological Rehabilitation
- Home & Care Home Visits

01483 424505
info@bevanwilson.co.uk
www.bevanwilson.co.uk

"The care, knowledge and
experience is exceptional, and they
always go above and beyond."



GETTING YOU BETTER TOGETHER FOR 25 YEARS!

Fully Insured

Fully Qualified

**Corrective
Surgery**

Reducing

Pruning

Thinning



Felling

Dismantling

**Hedge
Trimming**

Stump Grinding

Julian Draper NCH Arb

Tel 01428 681978 Mob 07968 827711

forkingbranches@hotmail.com

Allford
Interiors

BESPOKE
CABINET
MAKERS

For beautiful, bespoke, fitted or freestanding furniture, Allford Interiors designs and hand crafts innovative solutions for all our clients.

We collaborate closely with you from conception to completion. Each commission is personally designed, created and installed from our workshop in Milford.

Previous commissions include kitchens, studies, bedroom and bathroom furniture, bookcases and creative storage solutions.

Using solid timber or high-quality man-made materials, we can create anything from traditional shaker style furniture to unique contemporary pieces.

For a free design consultation, contact Stephen Allford on 07723717897 or for more information see www.allford.co.uk

A J Bennewith & Co
CHARTERED ACCOUNTANTS

We are an independent practice that has been offering a personal service for over 30 years

Contact us for all your accounting needs, tax needs and a free initial consultation

**Registered Auditors
Personal Tax Returns
Companies & Charities**

Tel: 01483 539 777
www.bennewith.co.uk





Care in the heart of your own home

Are you or an elderly loved one looking for support at home in **Godalming** or the surrounding areas? Then our local carers are here to help.

Novus Care is regulated by the Care Quality Commission and can provide a qualified carer to support your loved one in their own home from just **30 minute visits to 24/7 live-in care**.

For more information or to arrange a **FREE care assessment** please call: **01483 494132** or email: **hello@novus-care.com**

www.novus-care.com



LOOKING FOR A NEW ROLE?

Nestled within the beautiful & peaceful Surrey countryside, Ladywell Convent is home to the Sisters of Franciscan Missionaries of the Divine Motherhood. A group of Sisters, who have, & continue to dedicate their lives to supporting those in need.

Due to continued growth and the opening of our newly refurbished Franciscan Centre, Ladywell Convent has a number of **job opportunities** available in a range of sectors, including **Care, Maintenance, Hospitality & Administration**.

Ladywell Convent is a vibrant & busy place of work, with around 70 employees. Each of which, support the Sisters, in an environment that offers varied *opportunities and personal growth*.

Get in touch with HR to find out more about our current & upcoming roles, or to submit your CV.



Contact HR
01483 425775 | Recruitment@ladywell.org.uk

Coming up for Prime Time in March and April...



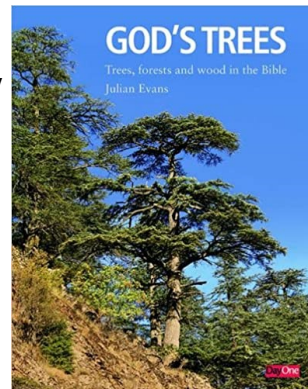
The **Marvellous Movie Matinees** at Busbridge Church continue on **Saturday 11th March** and **Saturday 22nd April**.

Our March offering is a fun film released last year about Mrs Harris, a widowed cleaning lady who becomes obsessed with one client's haute couture Dior dress. The ensuing adventure takes Mrs Harris all the way to Paris. Whilst in April we'll be showing a 2019 film starring Daniel Craig as the detective Benoit Blanc in a modern day murder mystery. If you're a fan of Poirot, you're likely to enjoy this film too. Doors open at 2pm for a 2.30 start. Complimentary tea, biscuits and popcorn are available at every screening and we always pause for an interval to allow for refills and chat! Please check the BHC website nearer the time for clues as to the title of the movie being shown or telephone the Church Office so that we can tell you!



Friday 24th March—Tea & Talk: God's Trees

Professor Julian Evans, author of bestselling book 'God's Trees' will be joining us to further explore how trees, forests and wood are depicted in the Bible and how they were used, and sometimes abused. What might Noah's Ark have been made of? Why was so much cedar imported by King Solomon for the temple, and what would have been so special about it? Where do frankincense and myrrh come from? What do we know about the wood of the cross of Christ? These and many other questions are addressed by Julian during his talk – which will of course be followed by the customary Prime Time tea and cake! **2.30pm—Busbridge Church**



Friday 28th April—Tour of Brookwood Cemetery, Woking



An opportunity to see some of this grade 1 listed park and garden and the largest cemetery in Western Europe. Learn about its history and that of some of its notable residents! See some of its listed monuments and get a better understanding of its huge diversity. The tour will be led by church member Ian Tomes whose role with Woking Borough Council has led him to oversee the major restoration of the cemetery. Further details of this event will be available nearer the time, so please do contact the Prime Time Team via the Church office if this event interests you.



MONTHLY

Hearing Aid Clinics

are back!

Fridays 2-4pm

10th March, 14th April and 12th May in the Old Rectory, Busbridge Church. Free adjustment, service and replacement batteries. Open to all! Users of NHS-issued hearing aids can now collect replacement batteries from the Yew Tree Café at any time when the café is open. This is an extension of the existing Hearing Aid Clinics run by BHC as part of the Diocesan Hear Here! project.

The new Hearing Aid Clinic at Godalming Library is on the 3rd Monday morning of every month between 10:30 and 12:30.

Regular **Coffee Drop-In** sessions take place in



the **Yew Tree Café** every Monday morning between 10.30 and 11.30am. No need to book ahead for these sessions, just come along and enjoy the chat and good company. A member of the Prime Time Team will always be there to welcome you.

For further details regarding Prime Time or to book onto any Prime Time event, please contact the Prime Time Team via the Church Office on 01483 421267 or email: primetime@bhcgodalming.org

BARRA PILATES

strength flexibility posture balance

Tuesdays

09:15 mixed ability
10:30 functional health

Fridays

13:00 mixed ability



Busbridge Village Hall GU7 1XA

- Small classes
- Easy parking
- Contact me to book

Private Instruction

Focus on your specific needs through an individual programme or team up with a friend.



07944 076004
barrapilates@gmail.com
www.barrapilates.co.uk

My Personal Fixer



**Time Poor?
Too much Life Admin?
Need help getting through your to-do list
I can help create time for you**

Get in touch

info@mypersonalfixer.com

07985 499 197

www.mypersonalfixer.com

[mypersonalfixer](https://www.instagram.com/mypersonalfixer)

Computer Repairs



- ✓ Desktop & Laptop Repairs
- ✓ Wireless & Wired Networking
- ✓ PC Upgrades & Tune Ups
- ✓ Virus & Spyware Removal
- ✓ Data Backup & Recovery
- ✓ Server Support



ONSITE REPAIR OR COLLECTION
PROFESSIONAL AND RELIABLE SERVICE
RESIDENTIAL & BUSINESS CUSTOMERS ARE WELCOME



WE ALSO BUY OR REPAIR YOUR



BROKEN IPADS &
MACBOOK LAPTOPS



REASONABLE PRICES AND FAST TURNAROUND



07809 401721



01483 419468



www.TechGuy.biz



michael@TechGuy.biz



'Come away and rest for a while.'
(Mark 6.31)

The Franciscan Centre Ladywell is
open for anyone seeking some
space and quiet time.



We offer
retreats, quiet
days, spiritual
direction and
workshops.

Please contact us to book or for further information

Tel: 01483 675575

Email: franciscancentre@ladywell.org.uk

Address: Ashstead Lane, Godalming, Surrey, GU7
1ST, UK

www.franciscancentre.org.uk

Charity Number: 1199520

RB Carpentry & Joinery



Cabinetry,
Carpentry &
Joinery

Kitchen Fitting

General Property
Maintenance

40 years
experience

References
available

Busbridge based

Contact :
Rob Beasley

0797 7944162

Fed up with Ironing? Let the Ironing Fairy do it for you!



You are not alone!

Ironing is the most dreaded household chore.
We regularly heard people wishing for a "ironing fairy"
to take it off their hands, which is why we started our
business.

Why choose us?

- ✓ Free collection & delivery
- ✓ Turnaround in 48 hours
- ✓ Professional service

We can work around you

Whether you require a regular weekly or 'on demand'
ironing service.



01483 428044



07809 401794

www.ironingfairy.net



Following on from our article in the previous edition of The Bridge, we're pleased to say we raised **£850** from the proceeds of our **Charity Quiz** last December. Thank you so much for your generosity. Janet and Kate handed over a



Nexus

linking church & community

cheque for this amount to **Jane Felton** at the Oakleaf premises. They were delighted with our donation to **Oakleaf Enterprise** and took this photo to record the event.

At the beginning of February **Sally Wooding**, Head Fundraiser for **The Therapy Garden** in Normandy, gave us a fascinating insight into the history and work of this charity. Do visit their website to learn more and to find ways to support the work that they do for vulnerable adults and teenagers. They have two **National Garden Scheme Open Days** this year: **Sunday 21st May** or **Sunday 17th September**. It looks a lovely garden to visit.

Our **Nexus** charity for **2023** is the **Milford Hospital League of Friends** and we're very pleased to welcome their chair, **Jenny Millar**, to give us a presentation on **Thursday 2nd March**. Jenny will share with us points of interest about the past, present and future of Milford Hospital. There are lots of new plans for our local hospital, so do come along and be among the first to hear about these! We'll meet in the **Old Rectory** at **8.00pm**.

Our 'April' meeting will be on **Thursday 30th March** at **8.00pm** in the **Yew Tree Cafe**. We have brought it forward as the first Thursday in April is Maundy Thursday. We're sure many of you will be interested in hearing about '**Life on the Common**' from **James Giles**, Reserve Manager of **Thursley Common Nature Reserve**.

Thursley Common is a National Nature Reserve with areas of open dry heathland, peat bogs, pine and deciduous woodlands, ponds, ditches and marshes. It is abundant in all sorts of special wildlife, and we are very lucky to have this gem on our doorstep. Many of you will walk there regularly but it will be fascinating to hear about the management of this wonderful open space.

A date for your diary: on **Thursday 4th May** **Laura Mead** from **Christian Aid** will tell us all about their '**Pigeon Pea Project**' in **Malawi**, helping women in remote communities start small businesses. It should be interesting!

We start all our events with drinks and nibbles to give us chance to mingle and meet new people before handing over to our speakers for their presentations.

All are welcome to these events – including men! We look forward to seeing you! It's not too late to join Nexus! The annual **Membership** fee is **£20** and there's a **visitor** fee of **£5**. These fees cover refreshments, gifts or fees for speakers and charity donations. For more information, please contact

- Janet Harvey at janetmharvey@btinternet.com or
- Kate Kaye at katekaye2@btinternet.com

Our charity for 2023 is the Milford Hospital League of Friends

Nexus – building a network of friendship and support between church and community

Busbridge Weather (2022)

Herewith the promised weather records for 2022. What a year of contrasts! I should make two provisos: one, that the records are not absolutely complete as there was no-one to make recordings when we were away on holiday and secondly that the daily records were taken at 0900 hours whether that was GMT or BST. This should not greatly affect max.

temperature (normally during the afternoon) or precipitation, which are always recorded for the previous 24 hours at 0900 as no-one wants to get up at midnight to read weather data! Minimum temperature is recorded for the date on which it is read because usually the lowest temperature is between midnight and 0900 hours.

Chris Payne

Month	Total Rainfall	Max 24hr rain	Max Temp °C	Min Temp °C	Events
Jan	52 mm	10 mm on 7 th & 8 th	16°C on 1 st	-4°C on 6 th	Fog on 11 th , 12 th & 15 th Superb solar halo on 28 th at 0900
Feb	154mm	46mm on 13 th	14°C on 22 nd ,	-2 °C on 11th	Storm Dudley on 16 th -17 th ; Storm Eunice on 18 th ; Storm Franklin on 21 st
Mar	99 mm	33 mm on 1 st	18 °C on 15 th	-1 °C on 8 th & 21 st	Brown rain on 16 th full of Saharan dust. Snow showers on 31 st
Apr	39 mm	20 mm on 6 th	22 °C on 15 th	-4 °C on 3 rd	Snow flurries on 1 st ; Hail showers on 8 th
May	108 mm	22 mm on 30 th	25 °C on 17 th	4 °C on 9 th & 30 th	Thunderstorms on 24 th , 31 st ; Hail showers on 31 st
Jun	60 mm	11 mm on 27 th	29 °C on 17 th	5 °C on 1 st	Thunderstorm on 4 th
Jul	0 mm		40 °C on about 18 th		(Incomplete records because of holiday)
Aug	102 mm	40 mm on 17 th in about 20 mins 1530	32 °C on 14 th	8 °C on 7 th	Drought officially declared on 12 th
Sep	250 mm	63 mm on 6 th	25 °C on 12 th	2 °C on 17 th & 29 th	Thunderstorms on 4 th to 8 th ; Air frost on 17 th ; Sundog on 18 th
Oct	262 mm	64 mm on 23 rd	20 °C on 29 th	2 °C on 12 th	Thunderstorm with hail on 23 rd
Nov	398 mm	47 mm on 2 nd	20 °C on 9 th	2 °C on 20 th	Fog on 29 th & 30 th
Dec	210mm	42mm on 18 th	14°C on 30 th & 31 st	-6°C on 16 th	No rain and freezing temperatures between 6 th & 17 th . 104mm rain between 21 st and 30 th

Cranleigh Tiles & Bathrooms

246 High Street, Cranleigh, GU6 8RL



Whatever the budget, from non-branded basics and essentials to more sophisticated designer products, our family-run bathroom showroom led by Craig Cooper is here to help. We offer free, no obligation estimates and advice on everything bathroom related.

Bathroom Essentials • Showers • Toilets & Washbasins • Baths
Wet Rooms • Lighting • Tiles & Flooring
Design & Installation Available

Open 9.00am to 5.00pm Monday to Friday
Please ring to make an appointment

Saturdays 9.00am to 12.00pm
By appointment only

Telephone 01483 272727 or 07539 145513
craig@cranleighbathroomstudios.co.uk
www.cranleighbathroomstudios.co.uk

Godalming Choral Society
FEATURING GODALMING CHILDREN'S CHOIR

ANNIVERSARY CONCERT
Saturday 1 April 2023 7:30PM at Godalming Borough Hall

CONCERT
Godalming Choral Society,
Under the Patronage of the MAYOR,
(HONRY SARGALL, 2nd.)
On TUESDAY, JAN. 27th, 1863.
FOR THE BENEFIT OF THE
LANCASHIRE OPERATIVES
Sung by
ELLEN LY

Celebrating 160 years since the performance given by Godalming Choral Society in the newly built Borough Hall

Movements from Handel: Messiah, Parts 2 and 3; Haydn: The Creation plus a selection of charming duets and part songs inspired by the original programme

Musical Director : Sam Hayes

Tickets £16
(Free for under 18s)

Record Corner, Pound Lane,
Godalming (CASH ONLY),
online at www.godalmingchoral.org.uk,
box office 07941 506172 or at the door

CA Conquest Art
Enriching the lives of people with disabilities

Thursdays 10:30
Godalming United Church,
Bridge Road,
GU7 3DU
www.conquestart.org

We believe that everyone has a creative spark in them – and that this creativity can bring relaxation and the satisfaction of achievement.

Could you spare a couple of hours – not necessarily every week - to come and help our friendly group? No need for artistic experience required – just an interest in people and a willingness to lend a hand. Or get creative and come to make pictures!

Why not come along and meet us – have a cuppa, see what we do and join in.

01483 414778 nhmwilks@gmail.com

17 YEARS
Established 2006

Donline
COMPUTER
CONSULTANCY

TRADING STANDARDS
COMPLY WITH
CONFIDENCE
APPROVED

Donline offers professional computer engineering services to:
Small Business, Home Office, & Home Users.

Donline can assist with all of your IT requirements: Supply & installation of hardware and software, upgrades, networking, system and data recovery, printing, security, cloud computing, technical support and training.

Call: Don Tocher, on
07870-643486 or 02392-989594

Microsoft CERTIFIED Systems Engineer
Or contact Donline, online:
Web: www.donline.co.uk
Email: don@donline.co.uk

R. & R. Roofing
Guildford
Roofing Contractor & General Builder

- NEW ROOFS & REPAIRS
- CHIMNEY POINTING & REBUILD
- SLATING • TILING
- HIGH PERFORMANCE TORCH-ON FELTS
- FLAT ROOFS • LEAD WORK
- GUTTERING • uPVC FASCIAS & SOFFITS
- EXTERIOR MAINTENANCE

FREE ESTIMATES EMERGENCY SERVICE

01932 344660
07956 554604

7 Rivermead Byfleet KT14 7BZ

Email: russ@rr-roofing.co.uk

busbridge&hambledonchurch 

Help & Support

Financial Relief

Our church charity CFSF (Church Family Support Fund) has been giving financial gifts to people in need and are always grateful to know of anyone in the wider community needing this support. See

[www.bhcgodalming.org/c19-](http://www.bhcgodalming.org/c19-givingandsupport)

[givingandsupport](http://www.bhcgodalming.org/c19-givingandsupport) or call 01483 421267 to let us know of someone in confidence.

Abuse Support

Call Surrey Against Domestic Abuse 01483 776822 – safety number; if you would prefer to make a call to the church (01483 421267), then we'd be willing to take some discreet information for you and act with you.

If your situation is threatening please call 999.



Life issue events to be held at Godalming Baptist church

(see also <https://www.godalmingbaptistchurch.org.uk/events>)

Meeting disaster head-on with hope:

Saturday 25th March from 10.00am-12.00. Chris and Denise Arthey share their experience of rebuilding their lives after a very serious motorbike accident.

Having wise conversations when Church and culture clash:

Saturday 22nd April from 09:30 -13:00. Andy Peck is a Bible teacher, trainer, broadcaster and editor. Please contact Sally Pollard-01483-428646 or e-mail pollard3@hotmail.co.uk for more information or to reserve a place at either of these events.

DAVE MOSELEY PAINTER AND DECORATOR

Interior and Exterior decorating
Qualified with over 30 years' experience

Mobile : 07774 132003
Telephone:- 01483 300891
Email: dmosley59@hotmail.co.uk



www.busbridgedesignbuild.co.uk

07968 022526

Your local firm, specialising in high quality new-builds, extensions, refurbishment and all other aspects of building works

Offering exceptional levels of service & attention to detail at competitive prices

Excellent local references and referrals

Contact us today for a quotation or to discuss your requirements

BUSBRIDGE EVENING WI

Our monthly meetings are held on the 2nd Tuesday of each month in Busbridge Village Hall. We have various activities including coach tours, garden clubs and many more. Meetings will start at 8pm.

New members welcome. Contact: Ann Heward 01483 420360

Tuesday 14th March: Talk by Karen Crookes - Making cards from ready-assembled fabric packs."

Tuesday 11th April: Talk by Ben Cross: "Why we should buy British cut flowers" Talking about his family Alstroemeria nursery in Arundel

SMALL ADS

GARDENER TRAINED WITH THE RHS, HARD WORKING AND RELIABLE. Will undertake weeding, pruning, mulching and bed work plus more from £25 per hour and medium hedge cutting service priced per job. Contact Matthew on **01483 421547**

MASSAGE THERAPY IN YOUR HOME with ex-paramedic, compassionate inquirer, Ruth. Do you struggle to take 'me time'? Have aches and pains? Are you stressed or worn out? First 2-hour experience half price @ £75. Take Action Text 'Yes' to **07766 720796**

www.ruthveda.com

SWIM COACH Swim England Qualified, Level 2 Coach & Teacher, Level 2 Open water, Channel Swim coach, Masters 18+ Club. All ages and levels welcome. RLSS Lifeguard. Based at St Catherine's school, Bramley **07592689059**.

info@surreyopenswim.co.uk

BABYSITTER/ DOG WALKER Teenage girl available for late afternoon, evening and weekend for dog walks and babysitting. £5/ dog walk or £5/hour. Fund-raising for a conservation trip! Contact **Mel at 07821 581040**

Artists, are you looking to promote your music?

We offer a variety of services, including

- Social Media Marketing
- Video Editing (eg. Lyric Videos)
- Design
- Content Creation

Email info@tonescreative.co.uk
Text +44 7754 932051

tones™

PC Doctor Godalming
Fixing computers of all shapes and sizes

If your computer is run down, unreliable and generally out of sorts then why not call for professional help and advice in your own home. All types of computer or network problems dealt with on a "No Fix No Fee" basis.



79 Pullman Lane, Godalming, GU7 1YB
Tel: 01483 424378 | 07876476990
email to: mike.lagan@pcdocgo.co.uk



Free valuations every weekday:
9am-5pm

Ewbank's



Surrey and Hampshire's Premier Antique and Specialist Auctioneers



Upcoming Auctions:

Pre-loved, Vintage & Antiques: 1 March
Magic The Gathering 1993-1998: 3 March
James Bond: 7 March
Jewellery, Watches & Coins: 22 March
Silver & Fine Art: 23 March
Antiques, Books, Stamps, Clocks & Furniture: 24 March
Cars, Motorbikes & Automobilia: 31 March

Pre-loved, Vintage & Antiques: 5 April
Vintage Posters: 6 April
Vintage Fashion: 19 April
Interiors & Modern Design: 20 April
Contemporary Art: 20 April
Magic the Gathering 1997-2002: 21 April

01483 223101

info@ewbanks.co.uk www.ewbanks.co.uk

Burnt Common Auction Rooms, London Road, Send, GU23 7LN

Alpha for friends with Learning difficulties

What does it mean to know Jesus? Come and join us for a cuppa and find out at Godalming Baptist church from Tuesday 18th April – until 11th July 3-4.30pm. Contact: catherine@lawtonfamily.net 07973927233. We would love to have you join us!



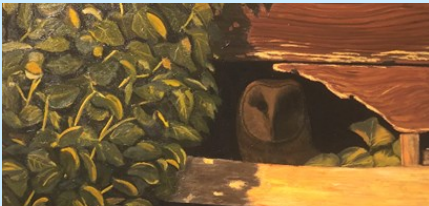


Godalming MUSEUM

THE NEEDLE AND THE THREAD exhibition continues until 19th March with Elizabeth Blake's extensive collection of hand sewn quilts, featuring her own original designs and specially chosen fabrics.



Susie Darnton has created a vast number of ceramic buttons of various sizes, shapes, textures and patterns. With a myriad of designs, visitors can enjoy looking at them and handling them, and imagining how they could be used.



ROB HEANLEY displays his skill as a wildlife artist from **24th March to 9th April**. His work illustrates his interest in the realm of these animals as much as the animals themselves; the light, the textures and the colours of their habitat.

EMMA'S NEEDLEWORK , LOCAL TOWNS AND LANDSCAPES from April 12th to 29th will feature a variety of scenes depicted in needlepoint. Encouraged by friends, family and social media followers, Emma Thompson will host her first exhibition of her detailed and colourful needlework.



On Wednesday 12th October, 7.30 for 8pm there is a lecture by Alan Smith at the Octagon, Godalming Parish Church entitled **Balchen's Victory. The Loss and Rediscovery of an Admiral and his ship**. Admiral Sir John Balchen was born in Godalming in 1670. He saw action in numerous battles against the French and Spanish across 60 years and three separate wars. Tickets £5, available from Godalming Museum or on the door on the night.

From March 1st Godalming Museum is open for 5 days a week, Wednesday to Sunday from 11am to 3pm. From April 1st the opening times are extended to Wednesday to Saturday 10am to 4pm, and Sunday 11am to 3pm. Please check the website www.godalmingmuseum.org.uk or ring 01483 426510 in opening hours for further details.

We ask you to please make sure that those people who are the focus in photos have given their consent to be included in our publication and on our website; in the case of minors we ask that this is parental consent. "The Bridge" would like to thank advertisers for their support, but to make clear to readers that it does not offer any endorsement of the goods or services advertised. Views expressed in the articles are not necessarily those of the Editor or Busbridge Church. The Editorial Team reserve the right to edit any articles submitted for consideration for publication.

EDITORIAL TEAM

David Brockman (Editor)
Jacky Beale (Small Ads) 423768
Christine Payne 417320
Lorna Sherwin
Gemma Taylor
Emilia Guerra

Contact the Editor:
editor.atthebridge@gmail.com
Contact the Treasurer:
bridgetreasurer@bhcgodalming.org

**Copy Date for next edition:
Wed 19th April**

Write to us:
c/o Church Office, The Old Rectory, Old
Rectory Gardens, Godalming GU7 1XB.

Rector: Rev Simon Taylor 421267

Advertising

DISPLAY ADVERTISING is for businesses who wish to advertise in full, half, quarter or eighth page format.
Contact: editor.atthebridge@gmail.com

SMALL ADS are designed to advertise local services. £5 per insert, 40 words maximum. For Sale items £2, 20 words maximum. Please contact Jacky at: jackybeale@hotmail.com

We deliver free of charge to over 1900 local homes. For more information, please contact:
editor.atthebridge@gmail.com

*Professional, confidential &
sympathetic counselling*

Gill Brennan

MBACP (Accred), FdA (Hons), BA (Hons)
07947 424 538
gillhbrennan@gmail.com

www.godalmingcounsellor.com



Vanessa Edwards Hypnotherapy

Cognitive Hypnotherapist
DipCHyp, NLP, (Master Prac) HPD, MNCH,
CNHC Reg.

www.vanessaedwardshypnotherapy.co.uk
info@vanessaedwardshypnotherapy
07523101952

I specialise in helping women, young adults and teenagers with the following conditions:

anxiety, stress, depression, confidence, low self-esteem, weight loss, menopause management, trauma, sleep issues, smoking, fears and phobias.



Looking to maintain your independence?
Your local home care agency is here to help



carers at home
maintaining your independence

Rated 'outstanding' for care by the Care Quality Commission

Call us today on
01483 899350

Registered office
Maple Suite
Guardian House
Borough Road
Godalming
GU7 2AE

Carers at Home Limited.
Registered in England & Wales no. 05938034

 [@carersathomeuk](#)

 [@atcarers](#)

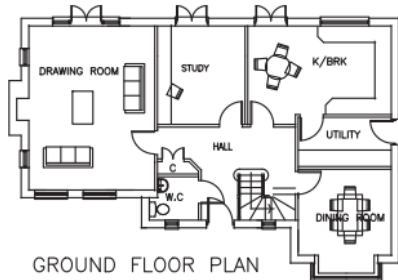
 [@carersathomeuk](#)

[carersathome.com](#)
info@carersathome.com

Carers at Home is registered with the Care Quality
Commission - CQC Provider ID 1-101644741



FRONT ELEVATION



GROUND FLOOR PLAN

PLANNING & DESIGN SERVICE LLP

Architectural drawings for
Extensions, Alterations &
New Build

Free No Obligation Quotations

Tel: 01483 417555
Mob: 07818 014357

www.architecturesurrey.co.uk
simonplanning.design@btinternet.com



Russell's Hedges & Tree Care Services

**Tree felling • Reductions • Pruning • Crown Lifting
Thinning • Hedges • Stump Grinding**

Fully Qualified & Insured

Member of Checkatrade

Russell Beddard

Tel: 01483 208161 Mob: 07722 506720

Email: rsgservices@outlook.com