

The Bridge

SEPTEMBER & OCTOBER 2022



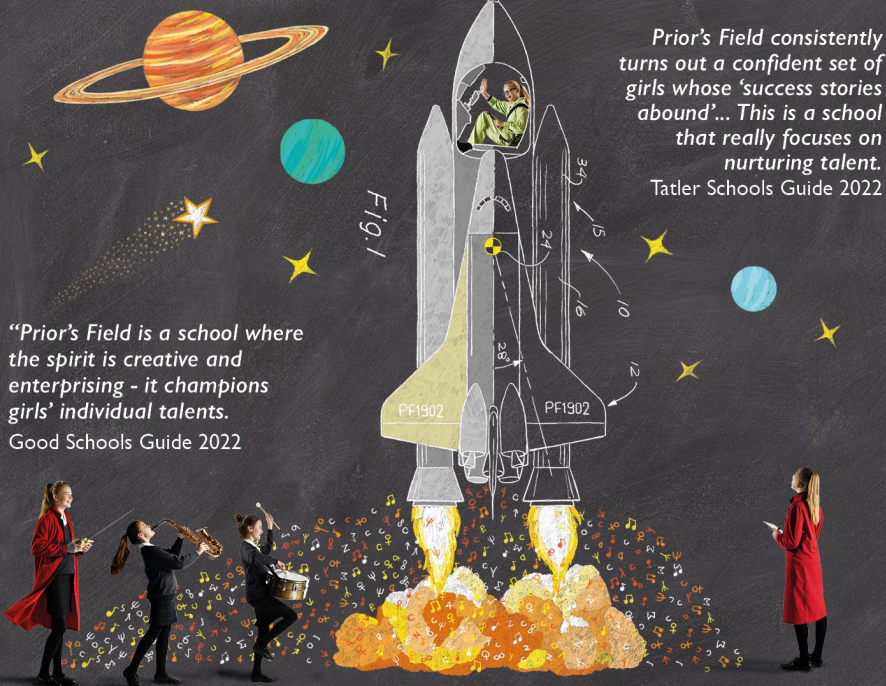
www.bhcgodalming.org/thebridge

PRIOR'S FIELD

The place to achieve



GSA Girls' Boarding and Day School 11-18, Godalming Surrey



"Prior's Field is a school where the spirit is creative and enterprising - it champions girls' individual talents."
Good Schools Guide 2022

Prior's Field consistently turns out a confident set of girls whose 'success stories abound'... This is a school that really focuses on nurturing talent.
Tatler Schools Guide 2022

Registered Charity No. 312038

DON'T MISS YOUR CHANCE TO APPLY FOR 2023

Future Families' Fortnight
Monday 19 - Thursday 29 September
(weekdays - 2023 applicants only)
Special 1-1 guided tour and private meeting with Head or Deputy Head

October Open Day (11+ onwards)
Saturday 1 October 2022
10.00am - 1.00 pm
Head's presentation, student-led tours and immersive subject demonstrations

Visit our website
www.priorsfieldschool.com
to book your place





FROM THE EDITOR

By the time you receive this the autumn season will have started, so we have an autumnal front cover for this edition.

We also have a four page feature on the highly successful Busbridge Open Gardens weekend which will remind you of summer. Thanks to all who organised the event and to the 500 who bought tickets to view the gardens.

David Brockman
Copy date for next edition is October 19
editor.atthebridge@gmail.com



Contents

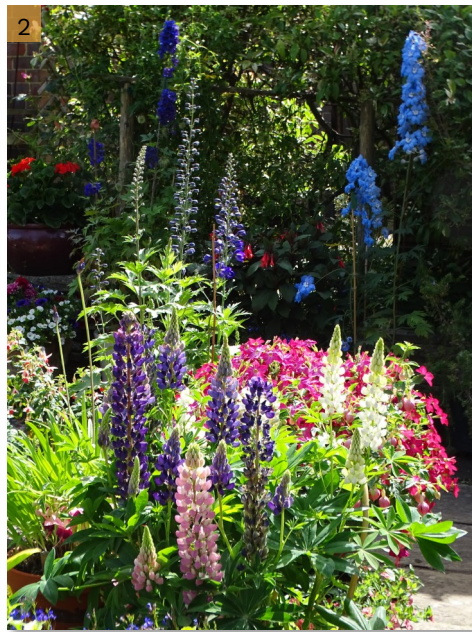
- 4 Busbridge Open Gardens
- 12 Walk with The Bridge: St Martha's and Albury
- 14 Moan or Mown - biodiversity in the churchyard
- 18 Godalming College Arts Festival
- 20 Church Calendar
- 21 A Word from Rev. Simon Taylor
- 24 Probus
- 28 Prime Time
- 31 Nexus News
- 37 Godalming Museum

Front cover: The boat house at Winkworth Arboretum by David Brockman

Busbridge Open Gardens

Busbridge Open Gardens took place on 25 & 26 June. 15 gardens were open and more than £6000 was raised to support the work of the Red Cross in Ukraine. Many thanks to those who opened their lovely gardens and to those who organised the event. The following 4 pages show a few examples of the gardens on display. *Photos by David Brockman and Chris Payne*

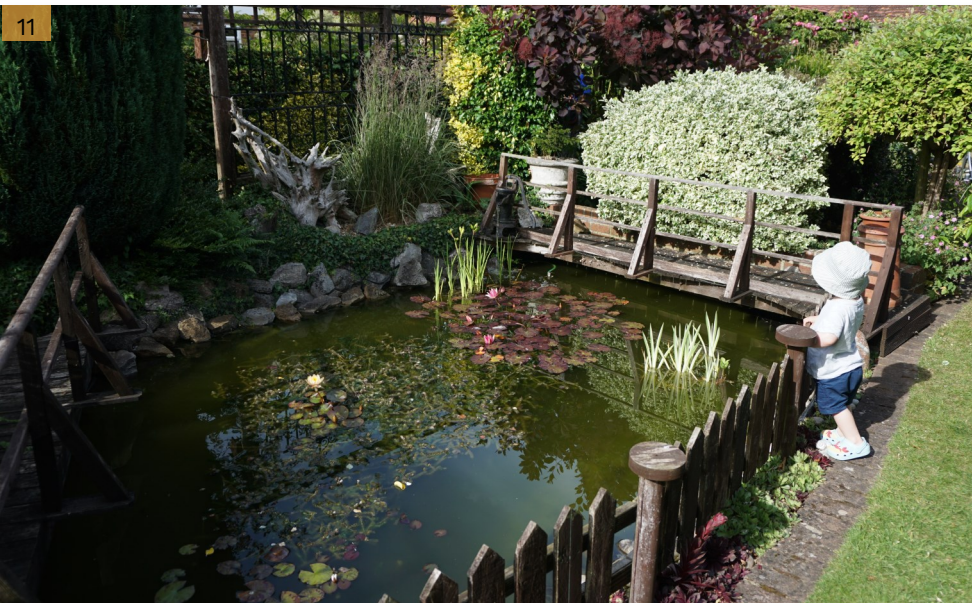
Photos: 1 View from The Summerhouse. 2 Amberley. 3. Flora Cottage. 4. Four Elms. 5. The Allotments. 6. Oriel House 7. The Tree House, Grosvenor Road 8. 20 Duncombe Road 9. Amberley 10. Keywaydin, The Close. 11. Myrtle Cottage 12. 74 Busbridge Lane 13. The Tree House, Grosvenor Road. 14. The Summerhouse 15. 5 Duncombe Road 16. Four Elms.



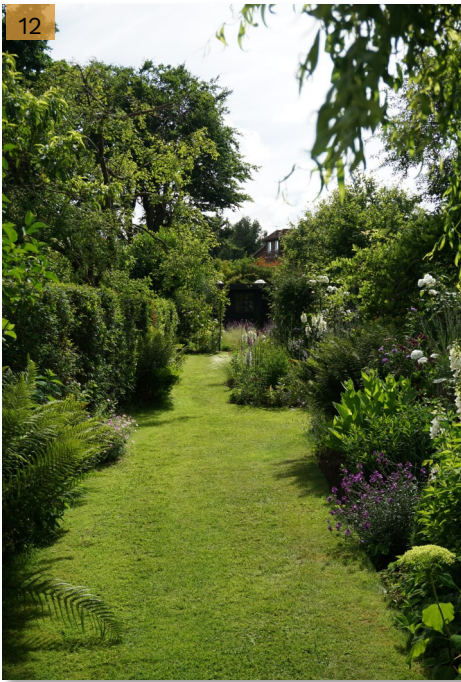
Busbridge Open Gardens



Busbridge Open Gardens



Busbridge Open Gardens



Ukraine



about the current situation amongst old and new friends.

The Church family provided a delicious lunch of savouries and cakes, rounded up with an

abundance of delicious strawberries supplied by Hall Hunter Partnership on Tuesley Lane.

We played games, leapt on the bouncy castle and chatted and got to know each other a little better.

If you would like to support the Ukrainians living in the area, please take a look at the private Facebook page Godalming and Villages Support for Ukraine where you can click on the invite button to be invited in.

Sarah Black

Ukrainian Independence Day Celebrations at Busbridge Church

About 100 people gathered in the garden of the Old Rectory at Busbridge Church on Sunday 21 August, about 80 of whom were from Ukraine.

Ukraine celebrates their Independence on 24 August each year, so it was a great opportunity to get together; celebrate the good things and think

g GODALMING CHORAL SOCIETY *The home of choral singing in Godalming*

Following a wonderful season they are looking forward to welcoming singers, old and new, on Tuesday 6th September at 7.30pm at the Wilfrid Noyce Centre, Godalming. Rehearsals will begin with Cesar Franck's Mass in A and Seasonal Music from around Europe, for a performance at St. John's Church, Farncombe on 3rd December.

In March, at the Godalming Borough Hall, they will celebrate 160 years of the Choral Society singing a selection from the performance by the choir in 1863 at the opening of the Hall.

Then in September 2023, they hope to hit the heights with a performance of the Verdi Requiem in the Theatre in the Wood, the home of Grange Park Opera in the grounds of West Horsley Place. They will be joined by the Epworth Choir and the Horsley and Oxshott Choral Societies.

If you'd like to take part in singing choral music to a high standard, come along to the first rehearsal or make contact as below: www.godalmingchoral.org.uk

or e-mail
secretary@godalmingchoral.org.uk

Helen McSherry



EMERY & ORCHARD

Godalming's **Local** Independent **Agent**
Established for over **25** years.

Property to sell in Godalming
or the Villages?

Then contact Tony Emery
or Jeremy Orchard on
01483 419 300
to arrange a
Free Market
Valuation.

20 High Street
Godalming
GU7 1EB
www.emery-orchard.co.uk



Busbridge Parish Register

16th July – Sophie Hemphill and Richard Iveson

6th August – Georgina Harris and Timothy Kovoor

Baptisms

7th August – Beatrice Edie Hope Buchanan

Weddings

2nd July – Chloe Denty and William McOnie

Funerals

27th June – Beverley Downey

Burial of ashes

16th June – George and Elizabeth Chadwick

18th July – Rita Smythe



Printed by **LINNERLAKE**

LITHO & DIGITAL PRINTERS

Established family business, based in Guildford with free delivery to Godalming. Leaflets, posters, booklets, order of services, wire bound books & more

www.linnerlake.co.uk 07590 047750 linnerlake@gmail.com

Appliance Service and Sales

- Repair of most main makes
- Built-in and Freestanding
- New appliances with installation
- * Built in and American F/F

Checkatrade.com
Where reputation matters

**Cooker/Oven
Dishwasher
Washing Machine
Tumble Dryer
Fridge/Freezer ***

Elstead (01252) 705198

www.applianceexpert.co.uk

Paul Clifford
Property Services
Qualified "Part P" Electrician
B-tec Trained Plumber
Electrical, Fuse Boards
Extra Sockets, LED Lighting

Fully Insured References Available

Paulclifford60@gmail.com 07889 073853

QUARRY HILL STORES

17 Quarry Hill



Paper Boys and Girls Required in Busbridge

Newspaper Delivery Service in Busbridge
Contact: Mr S. Patel

Tel: 01483 416938



St Catherine's, Bramley

GSA Day & Boarding School since 1885 | 4 - 18 years | Guildford GU5 0DF

You want your daughter to achieve academically but you want her to be intelligent in other ways too – to be confident socially, to have a strong moral compass, to shape the world around her, to believe in herself.

At St Catherine's we support your daughter in building the intellect and character that will help her develop as a bright, confident, compassionate and vibrant individual. At the heart of this is developing her sense of self-belief, that she can achieve whatever she is driven to do in life.

OPEN EVENTS

Tuesday 27th September 2022

Thursday 20th October 2022

Wednesday 30th November 2022

01483 899609

admissions@stcatherines.info

www.stcatherines.info

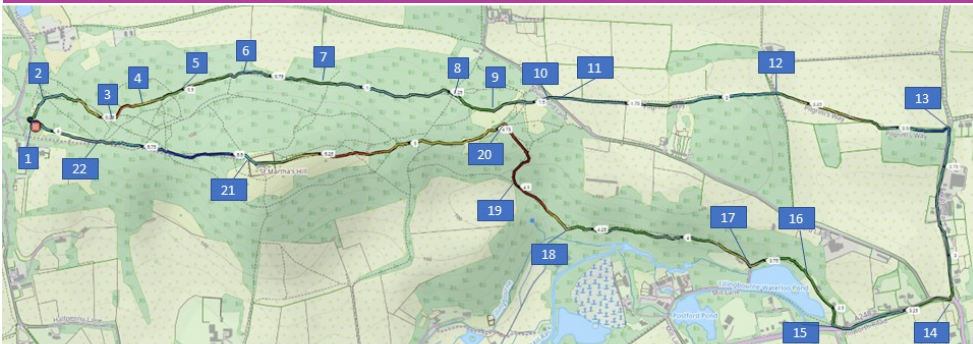


Walk with The Bridge: St Martha's and Albury



Length 3.7 miles; ascent 170m

A varied walk through fields and woods with lovely views.



1. Park in St Martha's car park on Halfpenny lane. Facing the information board, take the path out of the car park to your left past the bench. *[The first part of the walk can be a little confusing as there are so many paths. If in doubt head east—there should be fields on your left eventually and the main ridge of St Martha's hill to your right. Advisable to take a map !].*
2. Walk between the two trees and take the path which bears slightly right downhill. Then at the next fork take steep downhill towards footpath marker. Bear right along valley floor.
3. The path goes slightly uphill for about 100m. With rhododendrons on your left, take left turn up hill on sandy path at junction.
4. At next junction turn left up hill, then fork right part way up the hill.
5. Pass a yew tree on your right as path levels out. At next junction bear left (there is a clearing to your right).

6. Bear left down hill and then right after 5m. Join more major path with oak tree near the bottom of the dell and continue on the other side on main path.
7. Continue on undulating path and views towards white lane in Guildford open up. At the next marker post continue slightly left downhill.
8. At fork by footpath marker bear left. At junction of six paths take path ahead and slightly to the right which goes slightly uphill.
9. At a fork, bear left slightly downhill. *Views open up on the left back towards Hascombe.*
10. This takes you into a car park. Take the path on the east side of the car park down to the road.
11. Cross the road and take the bridleway heading east between 2 fields. *The North Downs are now clearly visible on the left.*
12. At crossroads with footpath, continue through the hedge on the bridleway bearing slightly to the right.
13. The path descends to a paved road, turn right onto the road.
14. The road (Water Lane) ends at a T-junction. Cross the road and walk left along the pavement.
15. Cross the road just before a road sign warning of toads crossing. On the right there are 2 footpath signs within a few metres of each other. Take the first and continue keeping the houses on your right and the pond (one of many on this stretch of the Tillingbourne) on your left. (It appears you are walking through someone's garden but it is a public right of way!)
16. At end of garden continue on path over stile into woods.
17. After planks over boggy ground, bear right before meeting driveway.
18. Path bears right and uphill after lovely woods above the Tillingbourne.
19. Shortly after field appears on left, turn right uphill away from field. Follow footpath marker.
20. Turn left onto bridleway and follow up to St Martha's Church. Ignore Downs Link path to left and follow North Downs Way.
21. Leave churchyard by gate between Yew hedge. Follow NDW down hill.
22. At clearing take right fork which will lead to car park.

Text and photos by David Brockman



Mown or moan? by Chris Payne

I wonder if some of you have had a moan that the churchyard looked untidy and should be mown? In view of current environmental thinking and guidelines, the PCC are taking up the “No Mow May” campaign — see Cathy Brook’s article in the May-June 2022 edition of *The Bridge*.

The charity “Plant Life” suggests that 40% of plants may be threatened with extinction – and along with the plants go the insects, arachnids, birds and other wildlife that depend on them and each other. Many of these – not just bees, though they are very important – are pollinators and the loss of pollinators also means crop depletion and therefore a worrying impact on human beings. “Every little helps”, as the advert says, so Busbridge Church is attempting to contribute a little.

I saw more butterflies in the churchyard one sunny morning in June than I’d seen anywhere in the previous month or two. Added to which, we have an insignificant-looking but extremely rare wild flower in the Old Rectory garden, the narrow-leaved bittercress. I have only ever seen it previously in a tiny patch in Winkworth Arboretum. Ed and I invited a friend, Ann Sankey, a



Birdsfoot Trefoil



Dog Daisy spider

botanical expert and (now retired) official plant-recorder for the Botanical Society of Britain and Ireland, to walk with us to see the Winkworth specimens. She was excited to hear we had it growing on our church premises too and volunteered to make a complete botanical survey here on 27 May 2022. Her amazing results can be seen in the table on page 16.

The PCC has drawn up a proposal for managing the mowing regime in the light of this. There will be close-mown areas, maintained every two weeks, round the church, including those which give access for regular through routes and for visiting graves. This will also address safety concerns such as minimising the risk of grass snakes and tics coming into contact with people and dogs.

The spectacular areas of spring bulbs and other flowers – snowdrops, crocuses, chionodoxa, primroses and daffodils –



Narrow leaved bittercress



Creeping buttercups

will be safely conserved. “No Mow May” proposed for much of the rest of the area has to include earlier months to allow the proliferation of wildflowers such as the ox-eye daisy, daisies, buttercups, clovers, birdsfoot trefoil et al, along with the small areas where the rare meadow saxifrage blooms in mid-May, the seeds of which must be allowed to set and disperse. (If you wish to see this plant in abundance, the churchyard of St Peter and Paul in Godalming offers a meadow-full!) The Garden of Remembrance is shady and can become muddy, so needs careful appropriate maintenance.

A site visit is to be made in mid-February to establish whether a few small areas need to be mown early and a sign is to be erected to explain the No Mow May policy. The whole churchyard will be mown in the autumn.

See next page for table of plants found in the churchyard.



Meadow saxifrage

The tables below show a list of all the plant found in the churchyard. Note
 - plants in red font are non-native
 - Green shading cells are grassland species indicative of good habitats in Surrey
 - plants in blue shaded cells are nationally rare

Taxonomic name	Vernacular name	Taxonomic name (cont)	Vernacular name
<i>Acer platanoides</i>	Norway Maple	<i>Lapsana communis</i>	Nipplewort
<i>Achillea millefolium</i>	Yarrow	<i>Lepidium didymum</i>	Lesser Swine-cress
<i>Aegopodium podagraria</i>	Ground-elder	<i>Leucanthemum vulgare</i>	Oxeye Daisy
<i>Alliaria petiolata</i>	Garlic Mustard	<i>Leycesteria formosa</i>	Himalayan Honeysuckle
<i>Allium vineale</i>	Wild Onion	<i>Lotus corniculatus</i>	Common Bird's-foot trefoil
<i>Alopecurus pratensis</i>	Meadow Foxtail	<i>Luzula campestris</i>	Field Wood-rush
<i>Anisantha sterilis</i>	Barren Brome	<i>Mycelis muralis</i>	Wall Lettuce
<i>Anthoxanthum odoratum</i>	Sweet Vernal-grass	<i>Narcissus 'Telamonius Plenus'</i>	Div. Four (Pets Yellow - Trpt Yellow)
<i>Anthriscus sylvestris</i>	Cow Parsley	<i>Pilosella officinarum</i>	Mouse-ear-hawkweed
<i>Arrhenatherum elatius</i>	False Oat-Grass	<i>Plantago lanceolata</i>	Ribwort Plantain
<i>Bellis perennis</i>	Daisy	<i>Plantago major</i>	Greater Plantain
<i>Betula pendula</i>	Silver Birch	<i>Poa pratensis</i>	Smooth Meadow-grass
<i>Bryonia dioica</i>	White Bryony	<i>Polygonum arenastrum</i>	Equal-leaved Knotgrass
<i>Cardamine impatiens</i>	Narrow-leaved Bitter- cress	<i>Potentilla reptans</i>	Creeping Cinquefoil
<i>Carex muricata</i> subsp. <i>pairae</i>	Prickly Sedge	<i>Potentilla sterilis</i>	Barren Strawberry
<i>Centaurea nigra</i>	Common Knapweed	<i>Primula vulgaris</i>	Primrose
<i>Cerastium fontanum</i>	Common Mouse-ear	<i>Prunella vulgaris</i>	Selfheal
<i>Corylus avellana</i>	Hazel	<i>Ranunculus bulbosus</i>	Bulbous Buttercup
<i>Crepis capillaris</i>	Smooth Hawk's-beard	<i>Ranunculus repens</i>	Creeping Buttercup
<i>Dactylis glomerata</i>	Cock's-foot	<i>Rumex acetosa</i>	Common Sorrel
<i>Digitalis purpurea</i>	Foxglove	<i>Rumex sanguineus</i>	Wood Dock
<i>Dryopteris filix-mas</i>	Male-fern	<i>Saxifraga granulata</i>	Meadow Saxifrage
<i>Epilobium obscurum</i>	Short-fruited Willowherb	<i>Scilla sardensis</i>	Lesser Glory-of-the-snow
<i>Euphorbia peplus</i>	Petty Spurge	<i>Senecio jacobaea</i>	Common Ragwort
<i>Festuca rubra</i>	Red Fescue	<i>Silene dioica</i>	Red Campion
<i>Fragaria vesca</i>	Wild Strawberry	<i>Sonchus asper</i>	Prickly Sow-thistle
<i>Geranium robertianum</i>	Herb-Robert	<i>Sonchus oleraceus</i>	Smooth Sow-thistle
<i>Geum urbanum</i>	Wood Avens	<i>Stachys sylvatica</i>	Hedge Woundwort
<i>Hedera helix</i>	Common Ivy	<i>Tamus communis</i>	Black Bryony
<i>Heracleum sphondylium</i>	Hogweed	<i>Trifolium dubium</i>	Lesser Trefoil
<i>Holcus lanatus</i>	Yorkshire-fog	<i>Trifolium pratense</i>	Red Clover
<i>Holcus mollis</i>	Creeping Soft-grass	<i>Trifolium repens</i>	White Clover
<i>Hypochaeris radicata</i>	Cat's-ear	<i>Veronica arvensis</i>	Wall Speedwell
		<i>Veronica chamaedrys</i>	Germander Speedwell

MULLARD

FUNERALS — GODALMING SINCE 1897

INDEPENDENT FUNERAL DIRECTORS
& MEMORIAL MASONS

- 24 Hour professional & personal service
- Pre paid & pre arranged funerals
- Private chapels of rest

01483 860279 • www.mullards.uk

121-123 High Street, Godalming
Surrey, GU7 1AG



BUSBRIDGE EVENING WI

Our monthly meetings are held on the 2nd Tuesday of each month in Busbridge Village Hall.
Meetings will start at 8pm.
New members welcome.
Contact: Ann Heward 01483 420360

Tuesday 13th September talk by James Giles
"Thursley, A National Nature Reserve, A 1001 piece jigsaw

Tuesday 11th October
Cookery Cup
Talk by Helen Sturney
"14 Days in Japan, castles, gardens and more"

Saturday 1st October
Quiz evening for the Fountain Centre at Masonic Hall Godalming.
£12 per team member—includes quiche / salad supper. Call 01483 428564 or email busbridgewi@gmail.com



LONGACRE SCHOOL

INDEPENDENT PREPARATORY SCHOOL
FOR BOYS AND GIRLS AGE 2-11 YEARS

www.longacreschool.co.uk

Hullbrook Lane
Shamley Green
Guildford, Surrey
GU5 0NQ



OPEN DAY 23rd SEPTEMBER

9.30 - 12.00

Watch our video
#ReadyForTheNextAdventure



Godalming College Arts Festival 2022

The Arts Festival at Godalming College is held every summer and celebrates the work of the A-level students from the 5 courses in the Art department – Art, Graphic Design, Photography, Textiles, 3D Design and Media and Film. There was live music from the college bands and interactive installations which included a recreation of a George Seurat painting, with sticker dots and a giant knitting activity.

All the displays were so colourful and varied, it was an amazing display of talent. I really enjoyed looking at the work from the Art department.

The 3D design of buildings encompassed sustainability, the relationship to their surroundings and how buildings have evolved over the years. The models of the buildings were so detailed and intricate, I'm sure many architects would approve of their ideas and designs!



The Art display showcased many different mediums and techniques, including screen printing, digital imagery, acrylic, paper cutting, clay and mixed media. The variety of ideas in the pictures and models was so interesting, with explanations of why the student chose their particular topic.

The Textile display included macramé, embroidery, dissolvable material and screen printing. It was a very colourful display and made me want to sign up for some courses. Dissolvable material to make lace sounds fascinating.

The Photography and Graphics display was very thought provoking, as many topics questioned stereotypes, gender, eco-awareness, politics, empowerment and mental health. A lot of thought had gone



into their work and using a wide range of mediums, the students produced a fantastic array which not only looked great, but made you think and question things you took for granted.

It was a great evening, displaying all the hard work from the last two years. I think, considering their first A-level year was disrupted by Covid, so they were only in college every other week (on-line for the other week), for most of the year, the students and staff have overcome this to produce wonderful work that wouldn't look out of place at the Tate! **Lorna Sherwin**


Hugh Tanton
GARDEN DESIGN

Garden Design & Landscaping Solutions
From a Qualified Professional

Garden Design
 Border Rejuvenation
 Planting Plans
 Solutions to Problem Areas
 Planting and Landscaping
 Friendly Advice and New Ideas

T: 01403 713 714 M: 07502 277 911
E: enquiries@hughtantongardendesign.co.uk

To find out more please visit
HughTantonGardenDesign.co.uk






BARRA PILATES
 strength flexibility posture balance

Pilates Classes in Busbridge

Fridays:
 1pm — mixed ability
 2pm — functional health

Busbridge Village Hall
 Godalming GU7 1XA

- Small classes
- Easy parking
- Contact me to secure your slot

Private Instruction
 Focus on your specific needs and goals through an individual Pilates programme. Or team up with a partner or friend.




07944 076004
barrapilates@gmail.com
www.barrapilates.co.uk



Busbridge Church Services

FROM 11 SEP

9.30

CONTEMPORARY

BAND LED WORSHIP + CHILDREN'S GROUPS
REPLACED BY MUDDY CHURCH ALL AGE ON 1ST SUNDAYS
HOLY COMMUNION 3RD SUNDAYS

10.35-11.15 Coffee together

FROM 4 SEP

11.15

CLASSIC

COMMON WORSHIP WITH HYMNS
HOLY COMMUNION 1ST SUNDAYS

FROM 11 SEP

18:00

EVENING 2ND & 4TH SUNDAYS

EXTENDED TIME FOR WORSHIP & PRAYER
HOLY COMMUNION 4TH SUNDAYS

FROM 18 SEP

UNPLUGGED 3RD SUNDAYS

YOUTH SERVICE



You can watch these services live and on demand on YouTube [BHCGodalmingonline](https://www.youtube.com/BHCGodalmingonline).



SPECIAL DATES: 9 OCT HARVEST FESTIVAL | SAT 15 OCT 3PM ANNUAL MEMORIAL SERVICE (FOR ALL THOSE WHO HAVE BEEN BEREAVED) | 6 NOV CONTEMPORARY PILOT AT STP&P GODALMING [NO MUDDY] | 13 NOV REMEMBRANCE SUNDAY

DO KEEP AN EYE ON THE NOTICES WHICH CAN BE FOUND ON THE WEB SITE:

WWW.BHCGODALMING.ORG/NOTICES

OR CONTACT VIC.HICKS@BHCGODALMING.ORG TO SUSCRIBE TO EMAIL.
WE LOOK FORWARD TO SEEING YOU!



busbridge&hambledonchurch 

   
Follow BHC Godalming



To find Muddy, you can use the what3words location. Download the /// app.

4 SEP

JACK PHILLIPS MEMORIAL

/// : blaze.outfit.swept

2 OCT

HOLLOWAY HILL REC

///: elite.slim.sands

[No Muddy in Nov]

4 DEC

THE PEPPERPOT

///: safety.once.human

9.30 MUDDY CHURCH



Rev Simon Taylor: How's your September reset going?

"In the Land of Uz there lived a man whose name was..." These are the opening lines of an ancient story from 4,100 years ago.

It's September and this is often a time of reset where we make decisions from the warm summer about trying to be or do things differently. As a church, we're swapping our quieter, more reflective Classic service to 11.15am and moving our Contemporary service to 9.30am. Do come along and see for yourself as part of your personal September reset. You'll find a warm welcome and good coffee.

As we consider a September reset it might be good to think about what happened to the ancient man of Uz. Ancient stories of old from many cultures can speak into our aspiration to reset, particularly when we consider the uncertainties that we face right now. As the Bible says, 'there's nothing new under the sun'.

When the film the Wizard of Oz was translated into Hebrew it was instead titled: "The Wizard of **Uz**" because Uz has a message from all those millennia ago. The wizard of Oz is a modern moral about good, bad, strength and weakness. The ancient man from Uz asks ageless questions about destiny and goodness when much that we might have thought to be permanent is being eroded around us.

The man from Uz experiences betrayal, destruction and loss. His family is decimated by death and illness. The story tells of how people begin to desert their friend from Uz who has fallen on hard times because they feel the ancient man from Uz no longer reflects well on their own success, so it must all be his own doing and fault. Blame begins to take hold and anger

rises. There's even an enormous storm and the weather seems unstable. A voice comes from the storm which warns people to brace themselves for what is coming.

Uz existed. Today we know it as parts of Palestine, Syria, Jordan and Israel. The ancient man is Job and we hear in detail of every body blow that assails him in this Bible account of his life; from weather to illness, from family death to economic hardship. It is from



his own story that we get the idea that there's nothing new under the sun.

As we look at a September reset, my own take is to look at Job, this ancient man, was able to hold on because Job didn't do storm avoidance – he headed through the storms that came his way. His words are an invitation to what a reset that lasts beyond September looks like: "I know that my redeemer lives, and that in the end he will stand on the earth" (Job ch 19). Through the storms that came, Job remained generous, kind and forgiving as he held everything lightly. The ancient man of Uz shows us that our September reset with God is a way through the storm. You might like to read Job's story for yourself; or consider how your personal September reset might bring lasting change.



St Hilary's

Preparatory School & Nursery, Godalming

Boys & Girls
Ages 2–11



Independent Prep School of the Year 2020



Open Morning on 17th & 30th September
Personal Tours by Arrangement

www.sthilaryschool.com • Tel: 01483 416551 • Email: secretary@sthilaryschool.com



@St-HilarysSchool



@sthilaryschool



St Hilarys School Trust

DUCK RACE



10 September

Saturday 11am to 4pm
Phillips Memorial Park

AXTELL

Rotary in Godalming presents the Great Godalming Duck Race on Saturday 10th September 2022 at the Phillips Memorial Park (near the bandstand) from 11am to 4pm.

There will be duck races on the river, a fun fair and stalls with merchandise and food offerings. The goal is to raise funds for the Phyllis Tuckwell Hospice Care, Citizens' Advice Waverley, and other Rotary Charities.

We are very grateful for the support of Roy and Andrew Axtell, directors of Axtell which is a major employer in the area with a Godalming head office. It is a product and service supplier to the construction industry. This includes ready mix concrete, concrete pumping, and waste disposal services together with a contracting division undertaking groundworks and surfacing.

Phyllis Tuckwell is the only Hospice Care service for adult patients, and their families, living with cancer (or other terminal illness) across the whole of West Surrey and part of North East Hampshire.

Citizens' advice provide free, confidential, independent and impartial advice and support for people experiencing problems.

Tickets cost £1 per duck and may be purchased in Godalming at Record Corner, The Cellar Camino cafe, through the Scouts, at events in Godalming and on the day. For more information visit <https://www.rotary-ribi.org/clubs/page.php?PgID=711377&ClubID=1744>



LOOKING FOR A NEW ROLE?

Nestled within the beautiful & peaceful Surrey countryside, Ladywell Convent is home to the Sisters of Franciscan Missionaries of the Divine Motherhood. A group of Sisters, who have, & continue to dedicate their lives to supporting those in need.

Due to continued growth and the opening of our newly refurbished Franciscan Centre, Ladywell Convent has a number of **job opportunities** available in a range of sectors, including **Care**, **Maintenance**, **Hospitality** & **Administration**.

Ladywell Convent is a vibrant & busy place of work, with around 70 employees. Each of which, support the Sisters, in an environment that offers varied *opportunities and personal growth*.

Get in touch with HR to find out more about our current & upcoming roles, or to submit your CV.



Contact HR

01483 425775 | Recruitment@ladywell.org.uk



BEVAN WILSON

Physiotherapy & Sports Injury Clinics

Highly-regarded clinics in Guildford Boxgrove GU1, Godalming and Wonersh, providing professional treatment and specialist advice to help you achieve your goals....

- Physiotherapy & Rehabilitation
- Spinal & Joint Pain, Stiffness
- Pilates & Women's Health
- Post-operative Rehabilitation
- Flexibility, Mobility & Balance
- Children & Adolescents
- Sports Injuries & Massage
- Orthotics & Joint Bracing
- Acupuncture & Electrotherapy
- Working Health & Posture
- Neurological Rehabilitation
- Home & Care Home Visits

01483 424505
info@bevanwilson.co.uk
www.bevanwilson.co.uk

"The care, knowledge and experience is exceptional, and they always go above and beyond."

GETTING YOU BETTER TOGETHER FOR 25 YEARS!



Probus—the promotion of good fellowship by Jon Warnke

The idea of Probus was conceived by three businessmen travelling to London by train in 1965 who were reaching the point of retirement and realised they had a need for fellowship. Now there are over 4500 clubs world-wide and 300,000 members.

The name “Probus” was suggested by a member who took the first three letters from 'PROfessional and BUSiness'. It had the advantage that it was a Latin word from which 'probity' is derived. Probus Clubs can be made up of men or women, or be mixed. Clubs are autonomous and local to towns and districts.

Milford Probus Club was established in 1999 and first held its meetings in the 'Red Lion' in Milford but now meets at the Godalming Masonic Hall. It has welcomed women members since 2016. Membership covers Godalming and the surrounding districts and currently there are over 50 members.

Monthly lunches are followed by a presentation from invited speakers on a diverse range of topics and interests. Many have had a local theme such as: 'Godalming - the knitting capital of Britain', 'Watts Gallery - Artists Village', 'Gilbert and Sullivan - London and Godalming'. Others have covered social, environmental and international issues - always in an engaging and approachable way. The programme for 2022 includes 'Career as a Royal Protection Officer', 'Carstensz Pyramid – An Adventure in Indonesia', 'The Life of an Antique Dealer' and 'Climate Change – Potential Solutions'. Every year we have a Summer and a Christmas lunch, usually held in a local hotel. Lunches are open to partners and additional guests.

The club organises a number of outings, usually in the spring and autumn together with Godalming Probus. These have included Bletchley Park, Blenheim Palace, Portsmouth Dockyard, and a number of National Trust gardens and properties, and recently to the Hawk Conservancy and the Army Flying Museum. There is an active walking group enjoying many of the fine walks especially in the Surrey Hills and the South Downs and they are usually rewarded with a reviving pub lunch. Walks aim to be enjoyable rather than strenuous.

Prospective members are welcome to join one of our lunches as a paying guest before committing to membership. More information about the club can be found at www.milfordprobus.com or contact committee member Jon Warnke (jgwarnke@btinternet.com and 07818 602699)





Care in the Heart of your Own Home

If you are looking for extra care and support for a loved one in Surrey then our local carers can help.

Novus Care is regulated by the Care Quality Commission and can provide a qualified, experienced carer to support your loved one in the comfort of their own home from just 30 mins per week to full-time live in care.



For more information or to arrange a free assessment, please contact the Novus Care Team on:
T: 01483 494132 | E: hello@novus-care.com | W: novus-care.com

WE'RE HIRING!



busbridge&hambledonchurch 

CHILDREN'S WORKER 4-11s

Go to www.bhcgodalming.org/job-vacancies to find out about this role and others.

Fully Insured

Fully Qualified

**Corrective
Surgery**

Reducing

Pruning

Thinning



Felling

Dismantling

**Hedge
Trimming**

Stump Grinding

Julian Draper NCH Arb

Tel 01428 681978 Mob 07968 827711

forkingbranches@hotmail.com

Allford
Interiors

BESPOKE
CABINET
MAKERS

For beautiful, bespoke, fitted or freestanding furniture, Allford Interiors designs and hand crafts innovative solutions for all our clients.

We collaborate closely with you from conception to completion. Each commission is personally designed, created and installed from our workshop in Milford.

Previous commissions include kitchens, studies, bedroom and bathroom furniture, bookcases and creative storage solutions.

Using solid timber or high-quality man-made materials, we can create anything from traditional shaker style furniture to unique contemporary pieces.

For a free design consultation, contact Stephen Allford on 07723717897 or for more information see www.allford.co.uk

A J Bennewith & Co
CHARTERED ACCOUNTANTS

We are an independent practice that has been offering a personal service for over 30 years

Contact us for all your accounting needs, tax needs and a free initial consultation

**Registered Auditors
Personal Tax Returns
Companies & Charities**

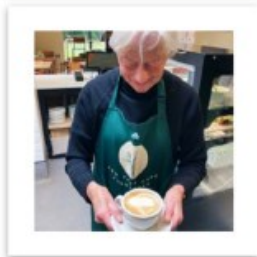
Tel: 01483 539 777
www.bennewith.co.uk



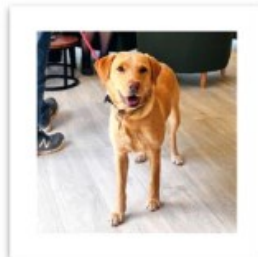


Stories from the Yew Tree Café at Busbridge Church GU7 1PJ

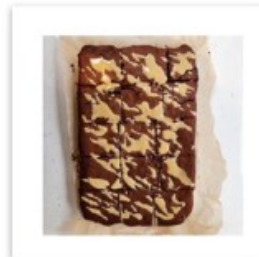
@yewtreecafebusbridge
what3words address: costs.wounds.feast



We've been open for 3 months and our volunteers have been absolute heroes.
#notforprofit #barista



We're always chuffed to have a visit from a doggy pal.
#dogfriendlycafé



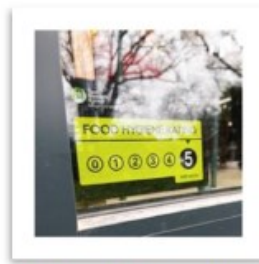
The Tahini Brownies go so fast.. be quick!
#handbaked #glutenfree #vegan



In need of a flat white after school drop off?
#flatwhite #coffeeart #eatin #takeaway



Not a bad view from the office! This is proving a favourite spot for remote workers.
#Communitycafé #freewifi



Go Team Yew Tree!
#specialitycoffee #mixologytea #handmadebakes #lunch

Thanks to all those who have visited since the café opened in March. Keep coming, invite friends, make it a stop on your bike ride or walk, bring the dog, bring the children, enjoy the terrace, find out about volunteering. The Yew Tree café is open weekdays in term-time 8.30am-4pm (takeaway to 4.30pm) and on Saturdays 10am-2pm. The café opens a bit later on weekdays during the school holidays: 5 July to 2 September—open weekdays 10am-4pm/4.30pm.

busbridge&hambledonchurch 



Prime Time is open to anyone (over 50s, retired and/or semi-retired) and warmly welcomes new members. For further details email: primetime@bhcgodalming.org or leave a message for the Prime Time Team via the Church Office on **01483 421267**.

Saturday 10th September—Walk & Pub Lunch

Dig out your binoculars and walking boots for an exploration of a wildlife haven in north-east Guildford. This circular walk around Guildford's riverside Nature Reserve takes us through meadow, wetland, open-water as well as woodland, so it is not surprising that the reserve supports numerous bird, amphibian and mammal species. Do join us and see what you can tick off your 'spotters' list! The walk will be followed by lunch at the nearby pub The Anchor & Horseshoes in London Road.



Saturday 8th October sees the return of our popular **Marvellous Movie Matinees** which will take place on a monthly basis throughout the autumn, winter and early spring. As always, the venue is Busbridge Church with the film commencing at 2.30pm. Complementary tea, biscuits and popcorn are available at every screening and we always pause for an interval to allow for refills and chat! Please check the BHC website nearer the time for clues as to the film to be shown.

Thursday 20th October—Come and get a 'souper' read at our **Soup & Roll Lunch and Book Swap** event. Bring a book to swap with a friend whilst enjoying a light lunch of home-made soup. Venue: Busbridge Church
Time: 12.15 for 12.30pm.



Regular Coffee Drop-In sessions take place in the Yew Tree Café every Monday morning between 10.30 and 11.30am. No need to book ahead, just come along and enjoy the chat and good company. A member of the Prime Time Team will always be there to welcome you.



MONTHLY
**Hearing
Aid
Clinics**
are back!

Fridays 2 — 4pm

9th September, 14th October and 11th November in the Old Rectory, Busbridge Church. Free adjustment, service and replacement batteries. Open to all! Users of NHS-issued hearing aids can now collect replacement batteries from the Yew Tree Café at any time when the café is open. This is an extension of the existing Hearing Aid Clinics run by BHC as part of the Diocesan Hear Here! project.

The new Hearing Aid Clinic at Godalming Library is on the 3rd Monday morning of every month between 10:30 and 12:30.

Cranleigh Tiles & Bathrooms

246 High Street, Cranleigh, GU6 8RL



Whatever the budget, from non-branded basics and essentials to more sophisticated designer products, our family-run bathroom showroom led by Craig Cooper is here to help. We offer free, no obligation estimates and advice on everything bathroom related.

Bathroom Essentials • Showers • Toilets & Washbasins • Baths
Wet Rooms • Lighting • Tiles & Flooring
Design & Installation Available

Open 9.00am to 5.00pm Monday to Friday
Please ring to make an appointment

Saturdays 9.00am to 12.00pm
By appointment only

Telephone 01483 272727 or 07539 145513
craig@cranleighbathroomstudios.co.uk
www.cranleighbathroomstudios.co.uk

Computer Repairs



- ✓ Desktop & Laptop Repairs
- ✓ Wireless & Wired Networking
- ✓ PC Upgrades & Tune Ups
- ✓ Virus & Spyware Removal
- ✓ Data Backup & Recovery
- ✓ Server Support



ONSITE REPAIR OR COLLECTION
PROFESSIONAL AND RELIABLE SERVICE
RESIDENTIAL & BUSINESS CUSTOMERS ARE WELCOME



WE ALSO BUY OR REPAIR YOUR



BROKEN IPADS & MACBOOK LAPTOPS



REASONABLE PRICES AND FAST TURNAROUND



07809 401721



01483 419468



www.TechGuy.biz



michael@TechGuy.biz

Pilates in Milford

Mondays: 9:30 am and 10:35 am
Location: BURTON PAVILION



- Pilates to strengthen the core stability muscles
- Improves posture, balance & co-ordination
- Relieves tension and stress
- Tones muscles and prevents injury
- Complements other exercise & relaxes
- Pre- & postnatal conditioning

A great way to get in shape. Easy to learn.

To register call 07767 811074
Or visit www.westsurreypilates.co.uk

Helen Roberts, Chartered Physiotherapist
MCSP, DipAPPhysSport HPC, APPI

RB Carpentry & Joinery



Cabinetry,
Carpentry &
Joinery

Kitchen Fitting

General Property
Maintenance

40 years
experience

References
available

Busbridge based

Contact :
Rob Beasley

0797 7944162

Fed up with Ironing? Let the **Ironing Fairy** do it for you!



You are not alone!

Ironing is the most dreaded household chore. We regularly heard people wishing for a "ironing fairy" to take it off their hands, which is why we started our business.

Why choose us?

- ✓ Free collection & delivery
- ✓ Turnaround in 48 hours
- ✓ Professional service

We can work around you

Whether you require a regular weekly or 'on demand' ironing service.



01483 428044



07809 401794

www.ironingfairy.net



At the beginning of August, several of us were treated to a wonderful morning at the **Blackdown Ridge Winery**, situated on the highest point overlooking the Sussex Weald. The views were spectacular and Lucinda, viticulturalist and our host, made us very welcome and gave us

Nexus
linking church & community



an informative and entertaining tour through the vines. This was followed by an informal tasting, accompanied by a selection of cheeses, salami and crackers. We had the chance to taste



and make notes on white, rosé and red still wines, and rosé and white sparkling wines. All very enjoyable. Blackdown Ridge is certainly well worth a visit! Afterwards, we had a lovely lunch at The Mulberry Inn.

We start our Autumn term on **Thursday 8th September**, when **Patrick Samuels**, our recently ordained Curate, will give his talk on **'My Life Journey'**. It will be interesting to hear of his faith journey, as well as a little of his other interests and former careers, before joining us at Busbridge and Hambledon Church.

On **Thursday 6th October**, we'll welcome Jess Ficatier talking about **'Habit for Humanity'**. Jess works for an organisation which works to provide sustainable homes in climate risk locations. With the heatwaves here recently, we've had a taste of how climate changes can have drastic impacts on communities in countries where the effects have been far more extreme. A fascinating and important topic, which we all need to recognise and try to understand.

We'll meet in **Busbridge Old Rectory** at **8.00pm** for both these talks. We'll start the evenings with drinks and nibbles and a chance to have a chat with friends before handing over to our speakers for their presentation. **All are welcome**, including men if they wish to join us. **We look forward to seeing you!**

A date for your diary: on **3rd November**, Helen Sturney will show us how to make special **Papercraft Festive Wreaths**. Just in time for the Christmas season!

You can view our programme of events for 2022 on the Church website
www.bhcgodalming.org/groups

Our charity for 2022 is: Oakleaf – Making Life Work with Mental Illness

Our annual Membership fee is £18, and there will be a visitor fee of £5.00 for non-members. These fees cover refreshments, gifts or fees for speakers and charity donations. For more information, please contact:

- Janet Harvey at janetmharvey@btinternet.com or
- Kate Kaye at katekaye2@btinternet.com

Nexus – building a network of friendship and support between church and community

Why not have lunch with Helen?


Her name may be Helen, but it may be something else. Having served her time at HMP Send she is about to be released. On a Friday afternoon, just as everything is closing for the weekend, Helen walks through the prison gates with just £76 in her pocket. This is hardly enough to find her food, accommodation, and everything else she needs to see her through the weekend. And, quite likely, nobody knowing her background will trust her with a job either.

Most likely, through desperation, she will return to a life of crime simply to get some cash. And soon she will be behind bars again. Is this necessary?

The BHC Outward Giving Group has come up with a scheme to help Helen and women like her. Give up a meal out during the summer or autumn and donate the money saved to the Nazareth Way at HMP Send. Prison Chaplain Lesley Mason will be delighted to see us helping in this way. Think of what £3000 would do in helping Helen and those like her out of their predicament.

If you are challenged by this, please donate £50 (the price of the average meal out) or anything you can afford to 'Lunch with Helen Fund', Busbridge PCC, Old Rectory, Old Rectory Gardens, Godalming GU7 1PU, by cheque, or direct to Busbridge PCC account 00705349, sort code 60-09-04, putting 'Lunch with Helen Fund' in the reference field.

Shelagh Godwin, for the BHC Outward Giving



LEAVING PRISON
Is it really necessary
for Helen to go
from this ...

... to this ...

... AND BACK
AGAIN?

Conservatoire

Concerts invite you
to their first concert

Conservatoire Concerts

of the season on September 10th, 7.00pm at Godalming Baptist Church.

This concert features two talented young musicians from Yehudi Menuhin School of Music, violinist Yume Tomita, and cellist Laura Lin, accompanied on the piano by Kan Tomita. Programme includes well known works by famous composers including JS Bach, Chopin, Ravel, Schumann and the very well known Handel Halvorsen Passacaglia for violin and cello.

To reserve a seat please visit our website www.conservatoireconcerts.org.uk or email suzanne.cacciottolo@gmail.com. This is a FREE concert with a retiring collection towards musicians' fees and expenses.

INTRODUCING **NEW EXERCISE CLASSES** in MILFORD TO IMPROVE YOUR HEALTH AT ANY AGE

PARACISE at The Clockhouse, Chapel Lane - 10.30 every TUESDAY

GENTLE ON YOUR JOINTS yet effective, Paracise flows smoothly through movements designed to **improve posture, balance, mobility and flexibility**, whilst improving your muscle memory

Exercise to fabulous music leaving you feeling refreshed and invigorated

45 minutes and *no floor work* - **Grow young with Paracise**



EVERYONE WELCOME - First Class FREE then £7

Call **DIANA** on **07850 779482** E: **diana@fitness50.co.uk**



WOBBLE at The Clockhouse, Chapel Lane - 11.30 every TUESDAY

STRENGTH AND BALANCE/FALLS PREVENTION - It starts and ends in a chair. There are also optional standing elements. Inactivity, ageing, illness or injury can result in loss of functional ability

Wobble focuses on exercises that help to **improve strength, mobility and confidence**,

Moving to music in a friendly environment puts you at ease and can help to make life easier.



Russell's Hedges & Tree Care

**Tree felling • Reductions • Pruning • Crown Lifting
Thinning • Hedges • Stump Grinding**

Fully Qualified & Insured

Member of [Checkatrade](#)

Russell Beddard

Tel: 01483 208161 Mob: 07722 506720

Email: rsgservices@outlook.com



Donline
COMPUTER
CONSULTANCY



*Donline offers professional
computer engineering services to:
Small Business, Home Office, &
Home Users.*

*Donline can assist with all of your
IT requirements: Supply & installation of
hardware and software, upgrades,
networking, system and data recovery,
printing, security, cloud computing,
technical support and training.*

Call: Don Tocher, on
07870-643486 or 02392-989594



Microsoft
CERTIFIED
Systems Engineer

Or contact Donline, online:
Web: www.donline.co.uk
Email: don@donline.co.uk

R. & R. Roofing

Guildford

Roofing Contractor & General Builder



- NEW ROOFS & REPAIRS
- CHIMNEY POINTING & REBUILD
- SLATING • TILING
- HIGH PERFORMANCE TORCH-ON FELTS
- FLAT ROOFS • LEAD WORK
- GUTTERING • uPVC FASCIAS & SOFFITS
- EXTERIOR MAINTENANCE

FREE ESTIMATES EMERGENCY SERVICE

01932 344660

07956 554604

7 Rivermead Byfleet KT14 7BZ

Email: russ@rr-roofing.co.uk

busbridge&hambledonchurch 

Help & Support

Financial Relief

Our church charity CFSF (Church Family Support Fund) has been giving financial gifts to people in need and are always grateful to know of anyone in the wider community needing this support. See www.bhcgodalming.org/c19-givingandsupport or call 01483 421267 to let us know of someone in confidence.

Abuse Support

Call Surrey Against Domestic Abuse 01483 776822 – safety number; if you would prefer to make a call to the church (01483 421267), then we'd be willing to take some discreet information for you and act with you.

If your situation is threatening please call 999.



Busbridge Design & Build

www.busbridgedesignbuild.co.uk

07968 022526

Your local firm, specialising in high quality new-builds, extensions, refurbishment and all other aspects of building works

Offering exceptional levels of service & attention to detail at competitive prices

Excellent local references and referrals

Contact us today for a quotation or to discuss your requirements



Life issue events to be held at Godalming Baptist church (see also <https://www.godalmingbaptistchurch.org.uk/events>)

Compassion Fatigue

Saturday 10th September 9.30am-12.30pm (coffee from 9.00am) led by Jayne Ellis.

Are you constantly giving out to others? Join us for a morning looking at the signs of compassion fatigue and how to care for ourselves when giving out to others.

Growing Old Disgracefully

Saturday 8th October 10am - 12.00pm. Coffee served at 9.30am Led by Dr Martin Brunet, GP at Binscombe Medical Centre. Looking at the physiology of aging, what really matters for staying healthy & changing priorities in old age

Bereavement

Saturday 29th October. 9.30am - 4.00pm. Coffee served at 9.00am. Led by Peter Jackson. With the universal experience of death & bereavement, this course is equally helpful for those of any or no faith.

To book a place on any of these sessions, please contact Sally Pollard 01483- 428646 or e-mail pollard3@hotmail.co.uk



A free phone line of hymns, reflections and prayers

SMALL ADS

GARDENER TRAINED WITH THE RHS, HARD WORKING AND RELIABLE.

Will undertake weeding, pruning, mulching and bed work plus more from £25 per hour and medium hedge cutting service priced per job. Contact Matthew on **01483 421547**

MASSAGE THERAPY IN YOUR HOME with ex-paramedic, compassionate inquirer, Ruth. Do you struggle to take 'me time'? Have aches and pains? Are you stressed or worn out? First 2-hour experience half price @ £75. Take Action Text 'Yes' to **07766 720796** www.ruthveda.com

SWIM COACH Swim England Qualified, Level 2 Coach & Teacher, Level 2 Open water, Channel Swim coach, Masters 18+ Club. All ages and levels welcome. RLSS Lifeguard. Based at St Catherine's School, Bramley
info@surreyopenswim.co.uk 07592689059



H.D Brooks & Sons Painters & Decorators

- Trusted, Rated and Reliable
- All aspects of interior and exterior painting and decorating undertaken
 - High end spray finishing
 - UPVC Spraying
 - Dustless Sanding

Proud members of

Checkatrade.com
Where reputation matters
Rated 9.96 as of 2022

Contact us for a free quote or advice

07557 342518

info@hdbrooksandsons.co.uk
www.hdbrooks.co.uk

Farncombe Morning Townswomen's Guild

We meet in St John's church room, St John's Church, Farncombe GU7 3EH on the second Wednesday morning of each month. Meetings start at 10.00.

Sep 14th: The Experiences of a Film Extra

Oct 12th: A talk about Botswana.

Phone Shirley on 01483 418102 for more information. We are a friendly group and would welcome new members. You can attend as a visitor to give us a try; we will be very pleased to see you.

PC Doctor Godalming

Fixing computers of all shapes and sizes

If your computer is run down, unreliable and generally out of sorts then why not call for professional help and advice in your own home. All types of computer or network problems dealt with on a "No Fix No Fee" basis.



79 Pullman Lane, Godalming, GU7 1YB
Tel: 01483 424378 | 07876476990
email to: mike.lagan@pcdocgo.co.uk



DAVE MOSELEY PAINTER AND DECORATOR

Interior and Exterior decorating
Qualified with over 30 years' experience

Mobile : 07774 132003
Telephone:- 01483 300891
Email: dmoseley59@hotmail.co.uk

*Professional, confidential &
sympathetic counselling*

Gill Brennan

MBACP (Accred), FdA (Hons), BA (Hons)
07947 424 538

gillhbrennan@gmail.com

www.godalmingcounsellor.com





Godalming MUSEUM

Godalming Museum is open on Thursdays, Fridays, Saturdays and Sundays, from 11am to 3pm.

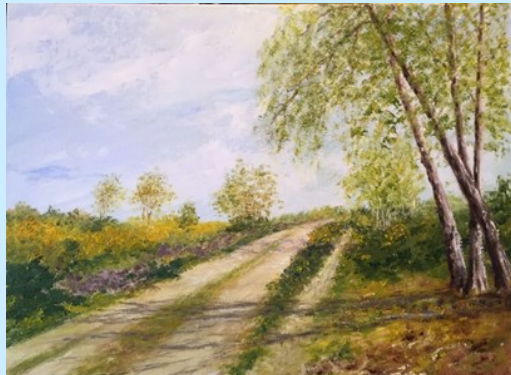
September 1st to 18th - Studio 12 group of artists return for their annual exhibition showcasing a wide variety of subjects, styles and media. They meet weekly in Wanborough

Village Hall with a tutor and a model, and also paint landscapes outside in the summer.



September 22nd to October 16th - 120 Years of Prior's Field in Twelve Treasures. Prior's Field School is celebrating its 120th birthday this year and in recognition they are displaying twelve treasures from the archive. Items include wooden lacrosse sticks, photo albums from the early 1900s, uniform and the Challenge Shield which was competed for by local schools.

October 20th to November 6th - Milford Artists' Autumn Exhibition. This exhibition showcases unique and colourful artworks inspired by subjects both locally and abroad. The group meet on Tuesday evenings from September to May at Milford Village Hall and new members are always welcome.



LECTURES AT THE OCTAGON, GODALMING PARISH CHURCH 7.30 FOR 8PM:

Wednesday 12th October: Balchen's Victory; The Loss and Rediscovery of an Admiral and his ship by Alan Smith.

Wednesday 9th November: Winkworth Arboretum; the Legacy of a Remarkable Man by Peter Herring.

Tickets for lectures are £5 available from Godalming Museum or on the door on the night.

Godalming Museum is at 109a High Street opposite the Pepperpot. Please check the website www.godalmingmuseum.org.uk or ring 01483 426510 in opening hours for further details.

The **Bridge** Magazine - editor.atthebridge@gmail.com

We ask you to please make sure that those people who are the focus in photos have given their consent to be included in our publication and on our website; in the case of minors we ask that this is parental consent. "The Bridge" would like to thank advertisers for their support, but to make clear to readers that it does not offer any endorsement of the goods or services advertised. Views expressed in the articles are not necessarily those of the Editor or Busbridge Church. The Editorial Team reserve the right to edit any articles submitted for consideration for publication.

EDITORIAL TEAM

David Brockman (Editor)
Jacky Beale (Small Ads) 423768
Christine Payne 417320
Lorna Sherwin

Contact the Editor:
editor.atthebridge@gmail.com
Contact the Treasurer:
bridgetreasurer@bhcgodalming.org

**Copy Date for next edition:
Wed 19th October**

Write to us:
c/o Church Office, The Old Rectory, Old
Rectory Gardens, Godalming GU7 1XB.

Rector: Rev Simon Taylor 421267

Advertising

DISPLAY ADVERTISING is for businesses who wish to advertise in full, half, quarter or eighth page format.
Contact: editor.atthebridge@gmail.com

SMALL ADS are designed to advertise local services. £5 per insert, 40 words maximum. For Sale items £2, 20 words maximum. Please contact Jacky at: jackybeale@hotmail.com

We deliver free of charge to over 1900 local homes. For more information, please
contact: editor.atthebridge@gmail.com

Next copy date is 19th October

We reserve the right to decline advertising or payment for advertising at our discretion.



MEMBER OF
THE PODIATRY INSTITUTE



Karen Regan
Pod Health Professional

KAREN REGAN DipFHP MCFHP MAFHP
MOBILE FOOT HEALTH PROFESSIONAL
WWW.HEARTANDSOLE.SITE
07776309567



Vanessa Edwards Hypnotherapy
Cognitive Hypnotherapist
DipCHyp HPD NLPPrac

www.vanessaedwardshypnotherapy.co.uk
info@vanessaedwardshypnotherapy.co.uk
07523101952

I specialise in helping women with anxiety, stress, confidence issues and weight loss. I also work with phobias, OCD, bad habits, smoking, depression and insomnia.

If your issue is not listed here please contact me.



Looking to maintain your independence?
Your local home care agency is here to help



carers at home
maintaining your independence

Rated 'outstanding' for care by the Care Quality Commission

Call us today on
01483 899350

Registered office
Maple Suite
Guardian House
Borough Road
Godalming
GU7 2AE

Carers at Home Limited.
Registered in England & Wales no. 05938034

 [@carersathomeuk](#)

 [@atcarers](#)

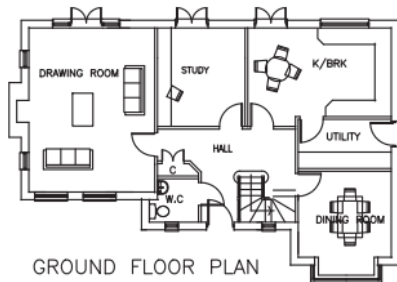
 [@carersathomeuk](#)

[carersathome.com](#)
info@carersathome.com

Carers at Home is registered with the Care Quality
Commission - CQC Provider ID 1-101644741



FRONT ELEVATION



GROUND FLOOR PLAN

PLANNING & DESIGN SERVICE LLP

Architectural drawings for
Extensions, Alterations &
New Build

Free No Obligation Quotations

Tel: 01483 417555
Mob: 07818 014357

www.architecturesurrey.co.uk
simonplanning.design@btinternet.com



Accepting consignments now

Burnt Common Auction Rooms, London Road, Send, GU23 7LN

info@ewbanks.co.uk

Free valuations Monday-Friday:
9:30am-5pm

Ewbank's



Surrey and Hampshire's Premier Antique and Specialist Auctioneers

The Phil Eason Puppet Collection: 9 September
Classic Cars & Automobilia: 20 September
Jewellery, Watches & Coins: 21 September
Silver & Fine Art: 22 September
Antiques, Clocks, Books & Antique Furniture: 23 September
Trading Cards & Retro Video Games: 29 September

James Bond - 60 Years of 007: 6 October
Antique & Collectors': 12 October
Decorative Arts: 26 October
Contemporary Art & Editions: 26 October
Asian Art: 27 October
Vintage Fashion: 27 October

01483 223101

www.ewbanks.co.uk